



AML21CBE2AC MICRO SWITCH™ Pushbuttons and Manual Switches



AML21 Series, Electronic Control Pushbutton, Square, Standard Bezel, Lighted, 1 Incandescent Lamp, DPDT, Momentary Action, Snap in panel mount

RoHS compliant

Product Features

Features

- 1, 2, or 4 poles.
- Silver or gold contacts.
- Full guard bezel option.
- Momentary or 2-level alternate action (push-on, push-off).
- UL recognized, CSA certified.
- Lamps can be furnished installed or ordered separately.
- Lamp circuit independent of switch circuit.

Potential Applications

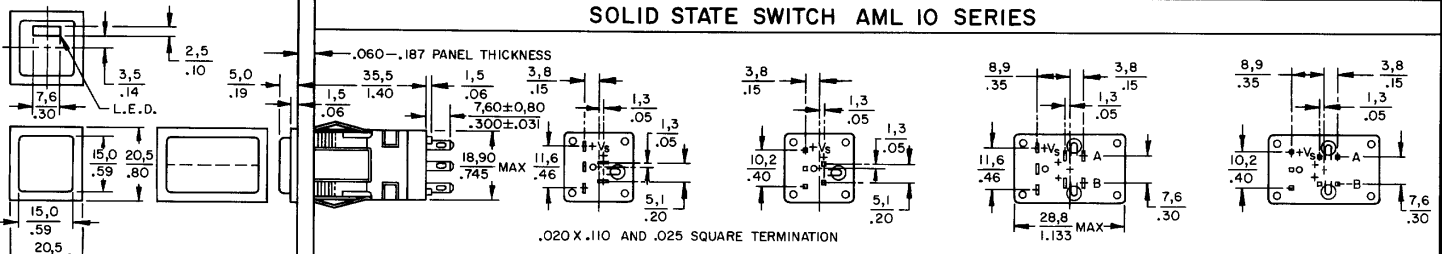


Product Specifications

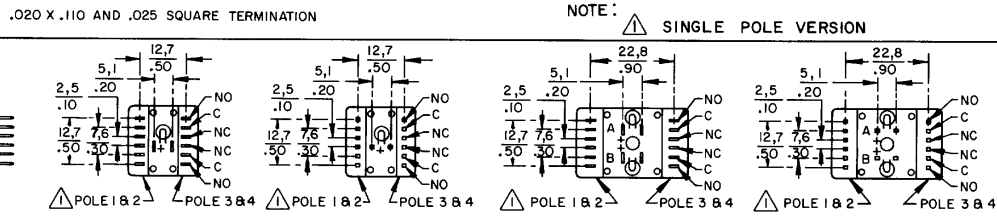
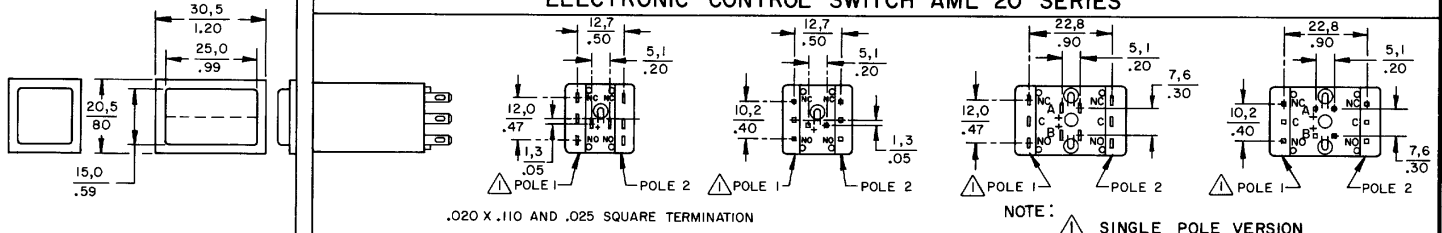
Product Type	MICRO SWITCH™ Pushbutton
Housing Type	Square
Circuitry	DPDT
Action	Momentary Action
Mounting	Snap-in Panel
Lamp Type	Lighted, 1 Incandescent Lamp
Termination	.110 x .020 (Solder or Quick-Connect)
Ampere/Voltage Range (Resistive Load)	0.4-2 A @ 0.5-30 Vdc, 0.4-2 A @ 0.5 -250 Vac, 0.4-3 A @ 0.5-125 Vac
LED/Lamp/Neon Voltage	28 V Lamp
Comment	use AML51 button
Availability	Global
UNSPSC Code	30211913
UNSPSC Commodity	30211913 Push button switches
Series Name	AML21

AML PUSHBUTTON AND INDICATOR SERIES

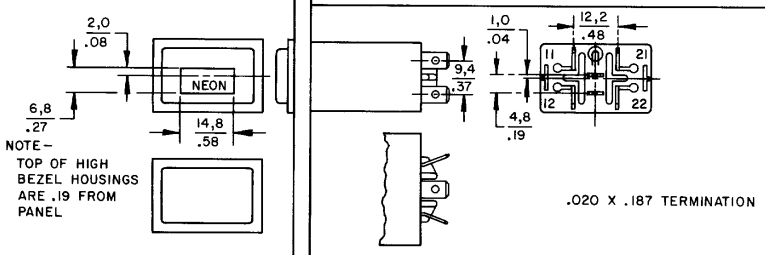
SOLID STATE SWITCH AML 10 SERIES



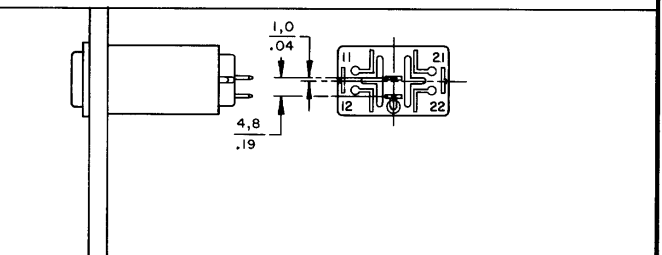
ELECTRONIC CONTROL SWITCH AML 20 SERIES



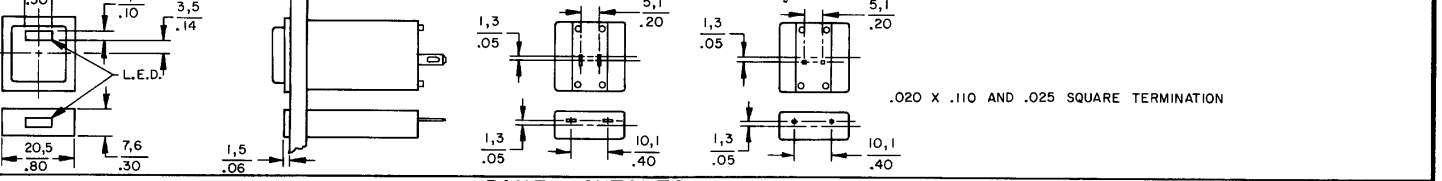
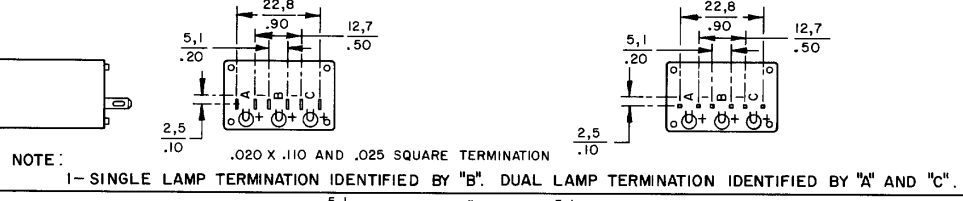
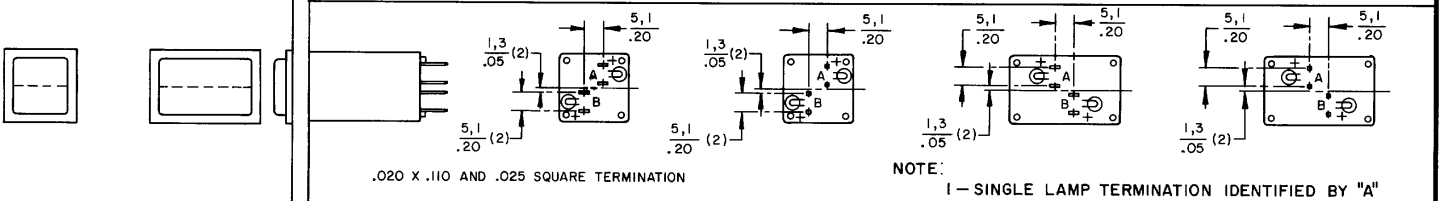
POWER SWITCH AML 30 SERIES



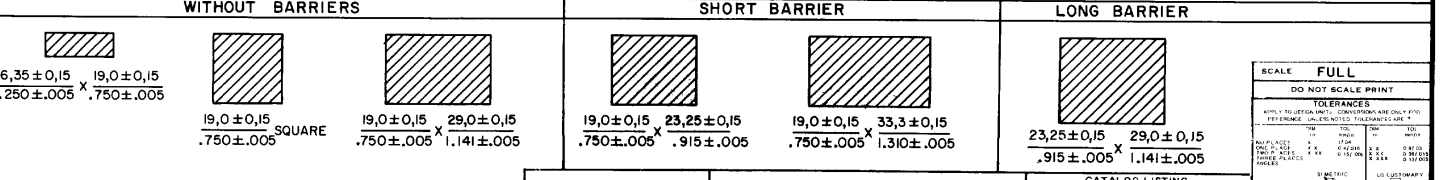
LINE POWER IND AML 43 SERIES



INDICATORS AML 40 SERIES



PANEL CUTOUTS



SCALE FULL
DO NOT SCALE PRINT
TOLERANCES
APPLY TO UNLESS OTHERWISE SPECIFIED
DIMENSIONS ARE IN MILLIMETERS
DIMENSIONS IN PARENTHESES ARE IN INCHES
UNLESS OTHERWISE SPECIFIED
DIMENSIONS ARE IN MILLIMETERS
DIMENSIONS IN PARENTHESES ARE IN INCHES
UNLESS OTHERWISE SPECIFIED

CATALOG LISTING
AML 10 20 30 40
OF 1 SERIES CHART 1
RELEASE NO. CO-78488
REPLACES & 40 SERIES
ISSUE 6
REVISIONS
A 8098291
8 11 99
B 204477
9 20 00
C 201568
20 02 00
D 206094
14 07 00
E 202971
30 12 01
DRAWN JAE
CHECK JAE
DATE JUN 94
FED. MFG. CODE 31929