



AML21CBA3AC



AML21 Series, Electronic Control Pushbutton, Square, Standard Bezel, Lighted, 1 Incandescent Lamp, DPDT, Momentary Action, Snap in panel mount

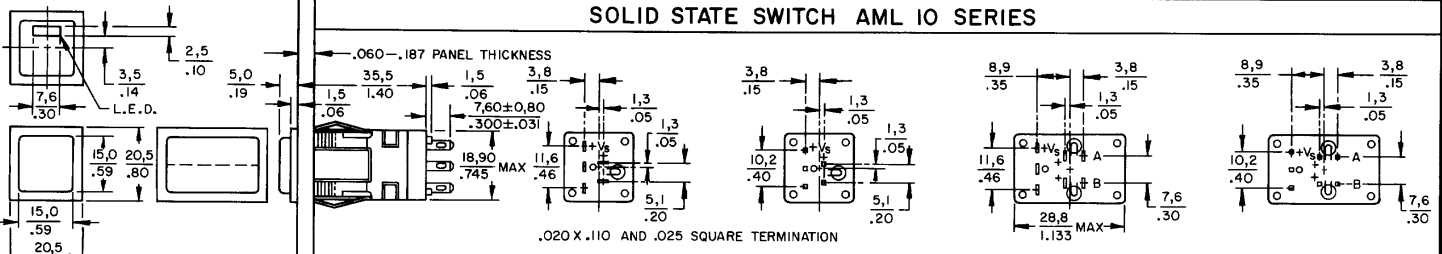
Features

- 1, 2, or 4 poles.
- Silver or gold contacts.
- Full guard bezel option.
- Momentary or 2-level alternate action (push-on, push-off).
- UL recognized, CSA certified.
- Lamps can be furnished installed or ordered separately.
- Lamp circuit independent of switch circuit.

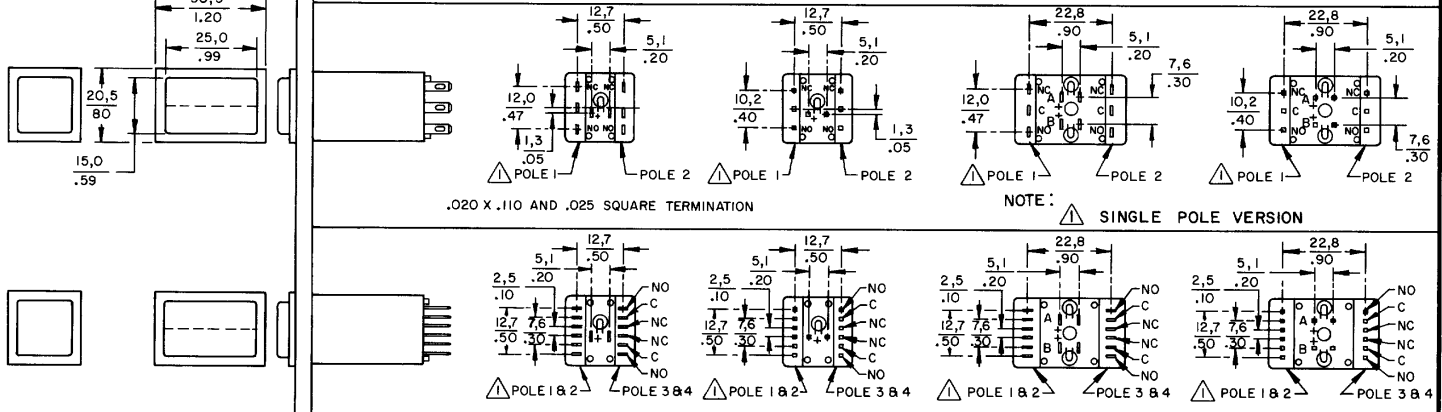
Product Specifications	
Product Type	MICRO SWITCH™ Pushbutton
Housing Type	Square
Circuitry	DPDT
Action	Momentary Action
Mounting	Snap-in Panel
Lamp Type	Lighted, 1 Incandescent Lamp
Termination	.025 x .025 (Printed Circuit, or Push-On)
Ampere/Voltage Range (Resistive Load)	0.4-2 A @ 0.5-30 Vdc, 0.4-2 A @ 0.5 -250 Vac, 0.4-3 A @ 0.5-125 Vac
LED/Lamp/Neon Voltage	No Lamp Installed
Comment	use AML51 button
Availability	Global
UNSPSC Code	30211913
UNSPSC Commodity	30211913 Push button switches
Series Name	AML21

AML PUSHBUTTON AND INDICATOR SERIES

SOLID STATE SWITCH AML 10 SERIES



ELECTRONIC CONTROL SWITCH AML 20 SERIES

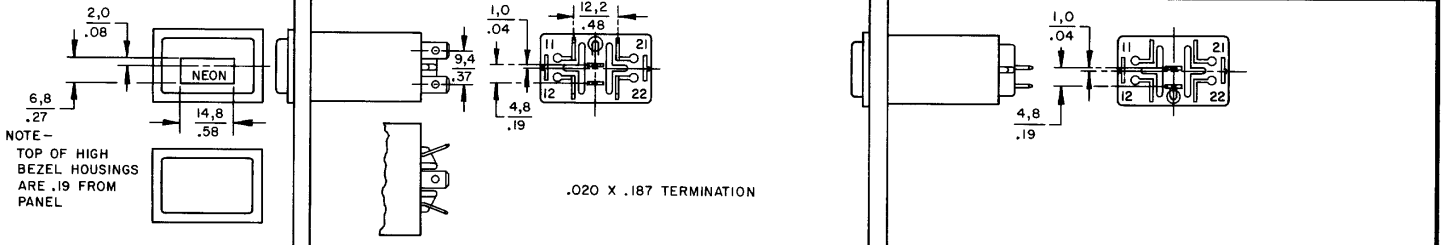


SWITCH TERMINATION .020 X .110 AND .020 X .029 Δ 2 POLE VERSION

LAMP TERMINATION .025 SQUARE

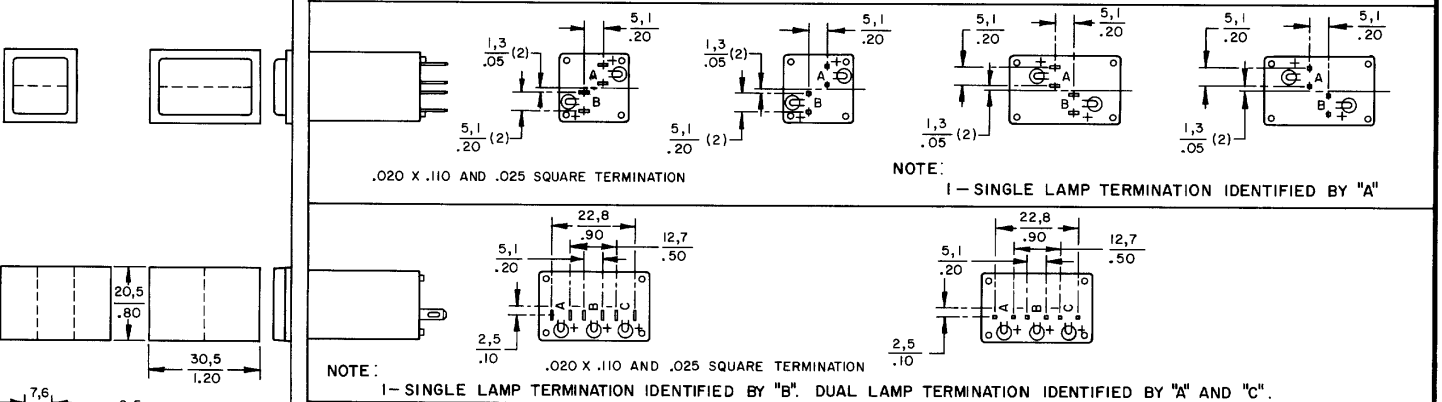
POWER SWITCH AML 30 SERIES

LINE POWER IND AML 43 SERIES



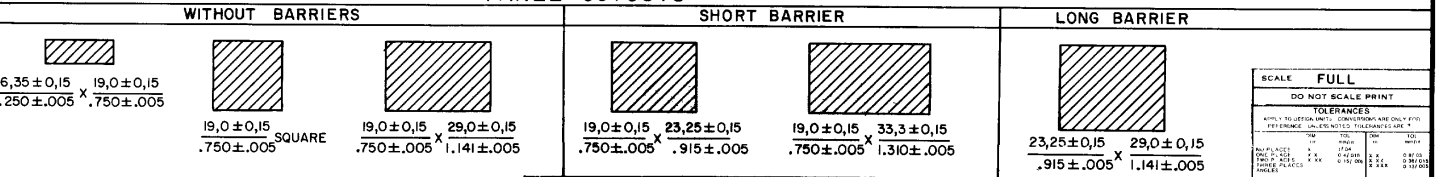
NOTE - TOP OF HIGH BEZEL HOUSINGS ARE .19 FROM PANEL

INDICATORS AML 40 SERIES



NOTE: I - SINGLE LAMP TERMINATION IDENTIFIED BY "B". DUAL LAMP TERMINATION IDENTIFIED BY "A" AND "C".

PANEL CUTOUTS



SCALE FULL	
DO NOT SCALE PRINT	
TOLERANCES	
APPLY TO METRIC UNITS. DIMENSIONS ARE ONLY GIVEN IN REFERENCE UNLESS NOTED OTHERWISE ARE *	
FINISHES	FINISH
PURCHASE	2.0 4.0 8.0 16.0 32.0
DRY PACK	2.0 4.0 8.0 16.0 32.0
POWER PLACES	2.0 4.0 8.0 16.0 32.0
PROTECT	2.0 4.0 8.0 16.0 32.0
DESIGN UNITS	<input checked="" type="checkbox"/> METRIC <input type="checkbox"/> US CUSTOMARY
THIRD ANGLE PROJECTION	
WEIGHT	

CATALOG LISTING AML 10 20 30 40
 PAGE 1 OF 1 SERIES CHART 1
 ISSUE 6
 RELEASE NO CO-78488
 REPLACES & 40 SERIES
 DRAWN JAK
 CHECK JAE
 11 JUL 94
 REVISIONS
 A 8098291
 8 11 99
 B 204477
 9 20 00
 C 201568
 20 02 00
 D 206094
 14 07 00
 E 202971
 30 12 01

MASTER REDUCED

MICRO SWITCH
a Honeywell Division

AML PUSHBUTTONS & INDICATORS

CATALOG LISTING
AML 10 20 30 40
SERIES CHART 1

THIS DRAWING COVERS A PROPRIETARY ITEM AND IS THE PROPERTY OF MICRO SWITCH A DIVISION OF HONEYWELL. THIS DRAWING IS NOT TO BE COPIED OR USED WITHOUT THE APPROVAL OF MICRO SWITCH

FED. MFG CODE 31923