



### AML21GBA2AD



**AML21 Series, Electronic Control Pushbutton, Rectangular, Standard Bezel, Lighted, 2 Incandescent Lamp, DPDT, Alternate Action, Snap in panel mount**

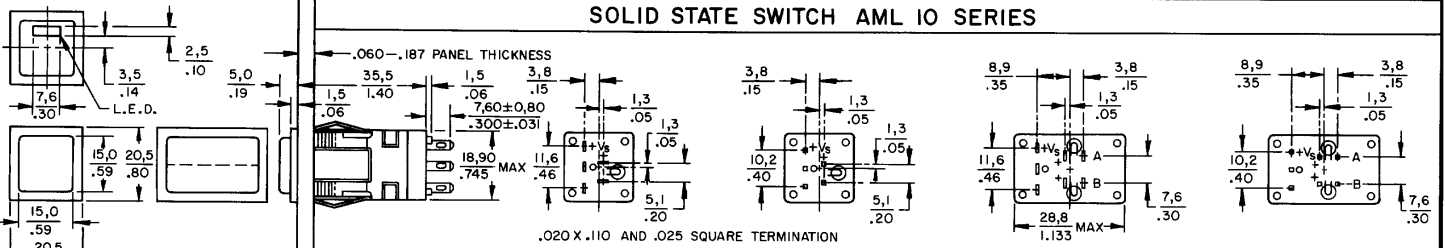
#### Features

- 1, 2, or 4 poles.
- Silver or gold contacts.
- Full guard bezel option.
- Momentary or 2-level alternate action (push-on, push-off).
- UL recognized, CSA certified.
- Lamps can be furnished installed or ordered separately.
- Lamp circuit independent of switch circuit.

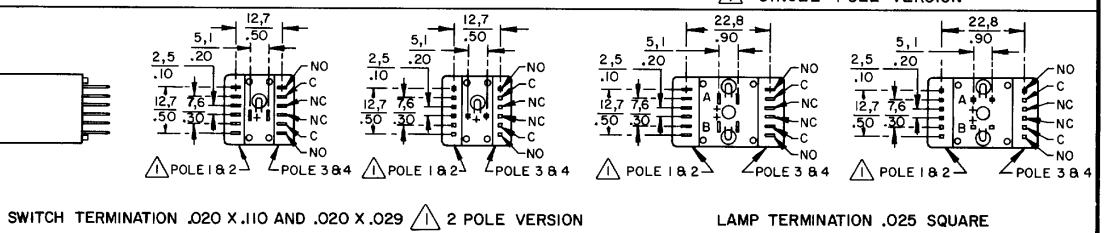
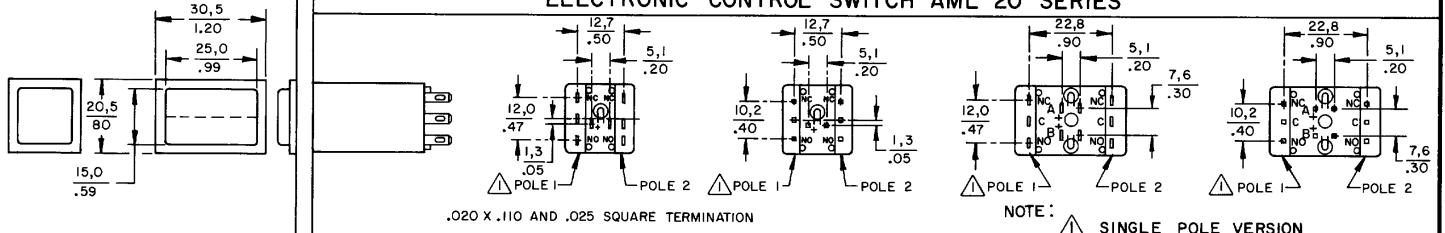
Product Specifications	
Product Type	MICRO SWITCH™ Pushbutton
Housing Type	Rectangular
Circuitry	DPDT
Action	Alternate action
Mounting	Snap-in Panel
Lamp Type	Lighted, 2 Incandescent Lamp
Termination	.110 x .020 (Solder or Quick-Connect)
Ampere/Voltage Range (Resistive Load)	0.4-2 A @ 0.5-30 Vdc, 0.4-2 A @ 0.5 -250 Vac, 0.4-3 A @ 0.5-125 Vac
LED/Lamp/Neon Voltage	No Lamp Installed
Comment	use AML51 button
Availability	Global
UNSPSC Code	30211913
<b>UNSPSC Commodity</b>	<b>30211913 Push button switches</b>
<b>Series Name</b>	<b>AML21</b>

# AML PUSHBUTTON AND INDICATOR SERIES

## SOLID STATE SWITCH AML 10 SERIES

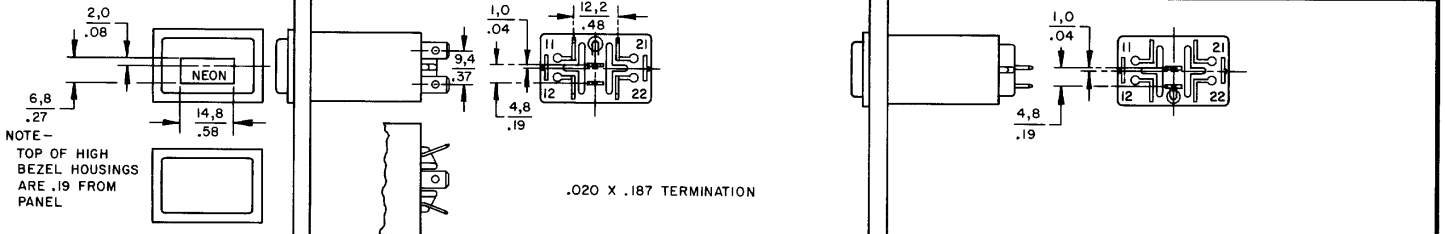


## ELECTRONIC CONTROL SWITCH AML 20 SERIES

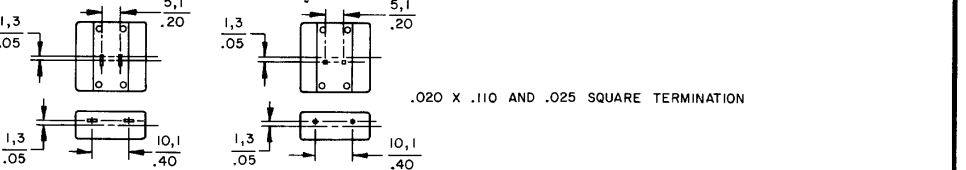
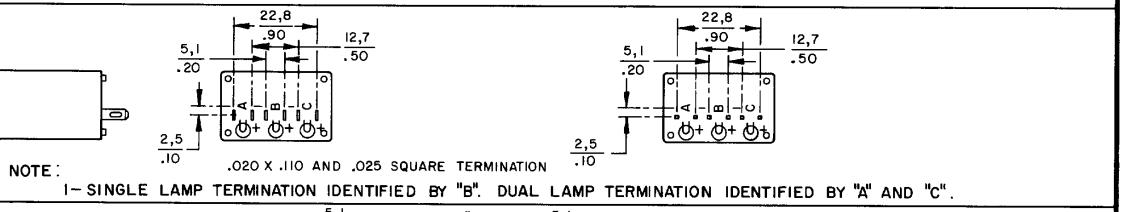
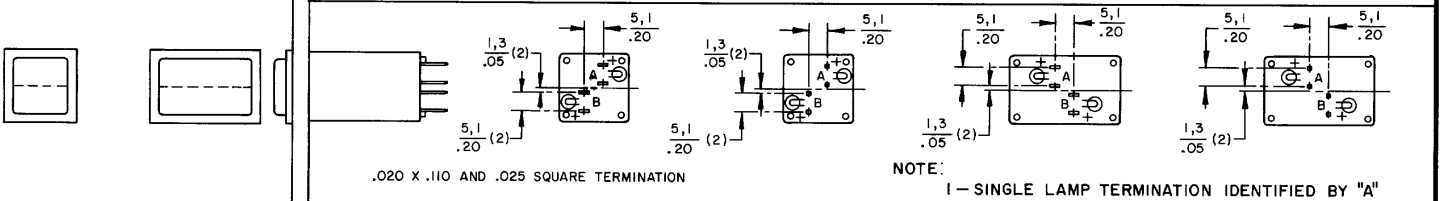


## POWER SWITCH AML 30 SERIES

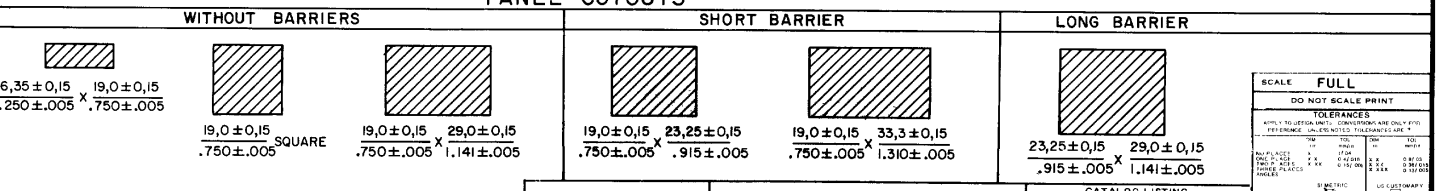
## LINE POWER IND AML 43 SERIES



## INDICATORS AML 40 SERIES



## PANEL CUTOUTS



SCALE FULL

DO NOT SCALE PRINT

TOLERANCES

APPLY TO METRIC UNITS. DIMENSIONS ARE ONLY GIVEN IN REFERENCE UNLESS NOTED OTHERWISE ARE \*

FINISH	FINISH	FINISH
PLACEMENT	PLACEMENT	PLACEMENT
DRY FILM	DRY FILM	DRY FILM
POWER PLACES	POWER PLACES	POWER PLACES

DESIGN UNITS  METRIC  US CUSTOMARY

THIRD ANGLE PROJECTION

WEIGHT

CATALOG LISTING AML 10 20 30 40 40

AML 10 20 30 40 SERIES CHART 1

RELEASE NO. CO-78488

REPLACES & 40 SERIES

ISSUE 6

REVISIONS

REV.	DATE	DESCRIPTION
A	8-11-99	8098291
B	200477	9-20-00
C	201568	20-02-00
D	200694	14-07-00
E	202971	30-08-01

MASTER REDUCED

THIS DRAWING COVERS A PROPRIETARY ITEM AND IS THE PROPERTY OF MICRO SWITCH A DIVISION OF HONEYWELL. THIS DRAWING IS NOT TO BE COPIED OR USED WITHOUT THE APPROVAL OF MICRO SWITCH

FED. MFG. CODE 91929

**MICRO SWITCH**  
a Honeywell Division

**AML PUSHBUTTONS & INDICATORS**

CATALOG LISTING  
**AML 10 20 30 40**  
SERIES CHART 1