

4

3

2

1

THIS DRAWING IS UNPUBLISHED. RELEASED FOR PUBLICATION 2-1437565-7, 2-1437565-7  
 © COPYRIGHT 2-1437565-7 ALL RIGHTS RESERVED.

LOC	DIST	REVISIONS					
AD	00	F	LNK	DESCRIPTION	DATE	BY	APPD
		U1		REVISED PER ECO-11-004587	11MAR11	RK	HMR

**SPECIFICATIONS:**

**MATERIALS:**

CASE: GLASS FILLED PPS, UL94V-0 BROWN  
 COVER: STEEL, TIN OVER NICKEL PLATE  
 ACTUATOR BUTTON: SEE TABLE - UL94V-0  
 MOVING CONTACT: COPPER ALLOY, SILVER CLAD  
 MOVING CONTACT: (1571563-1, -2, -7&-8), STAINLESS STEEL,  
 AG CLAD OVER NICKEL  
 FIXED CONTACT/TERMINAL, COPPER ALLOY-SILVER OVER NICKEL PLATE

**ELECTRICAL:**

MAX CONTACT RATING: 50MILLIAMPS@24V DC  
 MIN CONTACT RATING: 10MICROAMPS@1V DC  
 INITIAL CONTACT RESISTANCE: 100 MILLIOHMS MAX.  
 INSULATION RESISTANCE: 100 MEGOHMS AT 100 VDC MIN.  
 DIELECTRIC STRENGTH: 500 VAC 50/60 Hz FOR 1 MINUTE.  
 LIFE EXPECTANCY: (SEE TABLE)

**MECHANICAL:**

ACTUATION FORCE: (SEE TABLE)  
 ACTUATION TRAVEL: 0.25 +0.20/-0.10 [.010 +.008/-0.004]

**ENVIRONMENTAL:**

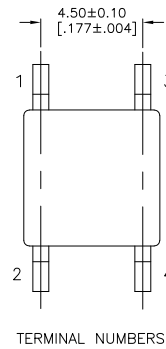
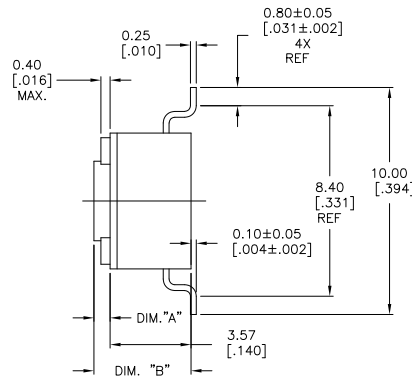
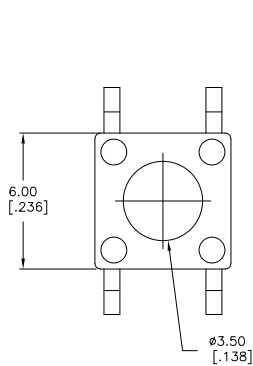
OPERATING TEMPERATURE: -35°C TO +85°C  
 STORAGE TEMPERATURE: -35°C TO +85°C  
 SOLDER HEAT RESISTANCE PER 109-201, CONDITION B

**SOLDERABILITY:**

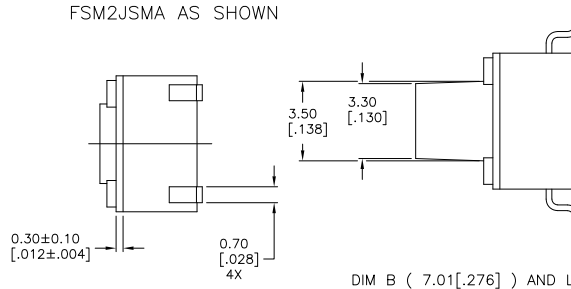
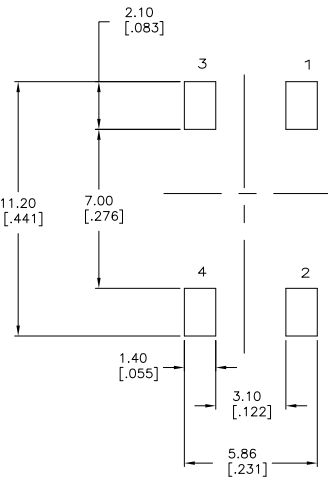
SPECIFICATION EIA-364-52, CLASS 1, CATEGORY 2

**NOTES:**

- 1 TAPE AND REEL PACKAGING PER EIA 481.
- 2 ALL MATERIALS AND FINISHES SHALL COMPLY WITH EU DIRECTIVE 2002/95/EC OF 27JAN2003 (ROHS)



FSM2J5MA AS SHOWN



TERMINAL NUMBERS

CIRCUIT CHARACTERISTICS	
CONTACT POSITION	CIRCUIT DIAGRAM
OFF	
(ON) 1 - 3 2 - 4	

THIS DRAWING IS A CONTROLLED DOCUMENT.		DRW D.SARKISIAN 04MVD4		TE Connectivity
DIMENSIONS: mm [INCHES]		CHK D.SARKISIAN 22APR04		MATERIAL
TOLERANCES UNLESS OTHERWISE SPECIFIED:		APPD D.SARKISIAN 22APR04	NAME	
0 PLC ± .01	1 PLC ± .01	PRODUCT SPEC	MICRO MINIATURE PUSHBUTTON SWITCH FSM J5M	
2 PLC ± .01	3 PLC ± .01	APPLICATION SPEC	SIZE	CAGE CODE
4 PLC ± .01	ANGLES ± 1°	WEIGHT	A2	00779
MATERIAL		CUSTOMER DRAWING		SCALE
FINISH		DRAWING NO		RESTRICTED TO
		2-1437565-7		1 of 2
		REV		U1

4

3

2

1

THIS DRAWING IS UNPUBLISHED. RELEASED FOR PUBLICATION 2-1437565-7, 2-1437565-7  
 © COPYRIGHT 2-1437565-7 ALL RIGHTS RESERVED.

LOC	DIST	REVISIONS					
AD	00	F	LNK	DESCRIPTION	DATE	BY	APPD
		-		SEE SHEET 1			

	100,000	WHITE	NYLON	260G±50G	12MM	24MM	13.00±0.10	[.512±.010]	9.40±0.10	[.370±.004]	FSM14JSMAATR	1571563-6
	100,000	WHITE	NYLON	260G±50G	-	-	13.00±0.10	[.512±.010]	9.40±0.10	[.370±.004]	FSM14JSMMA	1571563-5
OBSOLETE	100,000	BROWN	NYLON	100G±50G	-	-	13.00±0.10	[.512±.010]	9.40±0.10	[.370±.004]	FSM14JSML	1-1571563-0
	100,000	WHITE	NYLON	260G±50G	12MM	24MM	9.50±0.10	[.374±.004]	5.89±0.10	[.232±.004]	FSM8JSMAATR	1-1571563-4
OBSOLETE	100,000	WHITE	NYLON	260G±50G	-	-	9.50±0.10	[.374±.004]	5.89±0.10	[.232±.004]	FSM8JSMMA	1-1571563-3
	100,000	BLACK	PPS	160G±50G	12MM	24MM	9.50±0.10	[.374±.004]	5.89±0.10	[.232±.004]	FSM8JSMATR	1571563-9
	100,000	BLACK	PPS	160G±50G	-	-	9.50±0.10	[.374±.004]	5.89±0.10	[.232±.004]	FSM8JSMA	3-1437566-8
OBSOLETE	100,000	WHITE	NYLON	260G±50G	12MM	24MM	7.01±0.10	[.276±.004]	3.40±0.10	[.134±.004]	FSM6JSMAATR	1-1571563-2
OBSOLETE	100,000	WHITE	NYLON	260G±50G	-	-	7.01±0.10	[.276±.004]	3.40±0.10	[.134±.004]	FSM6JSMMA	1-1571563-1
	100,000	BLACK	PPS	160G±50G	12MM	24MM	7.01±0.10	[.276±.004]	3.40±0.10	[.134±.004]	FSM6JSMATR	5-1437565-0
	100,000	BLACK	PPS	160G±50G	-	-	7.01±0.10	[.276±.004]	3.40±0.10	[.134±.004]	FSM6JSMA	4-1437565-9
	1,000,000	VIOLET	NYLON	70G±30G	12MM	16MM	4.98±0.25	[.196±.010]	1.40±0.10	[.055±.004]	FSM4JSMXLTR	1571563-2
	1,000,000	VIOLET	NYLON	70G±30G	-	-	4.98±0.25	[.196±.010]	1.40±0.10	[.055±.004]	FSM4JSMXL	1571563-1
	100,000	WHITE	NYLON	260G±50G	12MM	16MM	4.98±0.25	[.196±.010]	1.40±0.10	[.055±.004]	FSM4JSMAATR	1571563-4
OBSOLETE	100,000	WHITE	NYLON	260G±50G	-	-	4.98±0.25	[.196±.010]	1.40±0.10	[.055±.004]	FSM4JSMMA	1571563-3
	100,000	BLACK	PPS	160G±50G	12MM	16MM	4.98±0.25	[.196±.010]	1.40±0.10	[.055±.004]	FSM4JSMATR	4-1437565-2
	100,000	BLACK	PPS	160G±50G	-	-	4.98±0.25	[.196±.010]	1.40±0.10	[.055±.004]	FSM4JSMA	4-1437565-1
	1,000,000	BLUE	PPS	100G±30G	12MM	16MM	4.98±0.25	[.196±.010]	1.40±0.10	[.055±.004]	FSM4JSMMLTR	1571563-8
	1,000,000	BLUE	PPS	100G±30G	-	-	4.98±0.25	[.196±.010]	1.40±0.10	[.055±.004]	FSM4JSML	1571563-7
	100,000	WHITE	NYLON	260G±50G	12MM	16MM	4.29±0.15	[.169±.006]	0.71±0.10	[.028±.004]	FSM2JSMAATR	2-1437565-9
	100,000	WHITE	NYLON	260G±50G	-	-	4.29±0.15	[.169±.006]	0.71±0.10	[.028±.004]	FSM2JSMMA	2-1437565-8
	100,000	GRAY	PPS	160G±50G	12MM	16MM	4.29±0.15	[.169±.006]	0.71±0.10	[.028±.004]	FSM2JSMATR	3-1437565-0
	100,000	GRAY	PPS	160G±50G	-	-	4.29±0.15	[.169±.006]	0.71±0.10	[.028±.004]	FSM2JSMA	2-1437565-7
	200,000	BROWN	PPS	100±50G	12MM	16MM	4.29±0.15	[.169±.006]	0.71±0.10	[.028±.004]	FSM2JSMMLTR	1571527-2
	200,000	BROWN	PPS	100±50G	-	-	4.29±0.15	[.169±.006]	0.71±0.10	[.028±.004]	FSM2JSML	1571527-1
LIFE CYCLE		ACTUATOR COLOR	ACTUATOR MATERIAL	ACTUATION FORCE	PITCH	TAPE WIDTH	DIM 'B'		DIM 'A'		T&B PART NUMBER	PART NUMBER

THIS DRAWING IS A CONTROLLED DOCUMENT. DIM D. SARKISIAN 04MVD4  
 CHK D. SARKISIAN 22APR04  
 D. SARKISIAN 22APR04  
 D. SARKISIAN 22APR04  
 D. SARKISIAN 22APR04

TE Connectivity  
 MICRO MINIATURE PUSHBUTTON SWITCH FSM JSM

APPROVALS: DIMENSIONS: DIMENSIONS: mm [INCHES] TOLERANCES UNLESS OTHERWISE SPECIFIED: 0 P.L.C. ± .010 1 P.L.C. ± .010 2 P.L.C. ± .010 3 P.L.C. ± .010 4 P.L.C. ± .010 ANGLES ± .1° MATERIAL: FINISH: APPLICATION SPEC: WEIGHT: SIZE: CASE CODE: DRAWING NO: RESTRICTED TO: CUSTOMER DRAWING SCALE: SHEET 2 of 2 REV: U1