



LSM7N



Series HDLS Non Plug-in: Side Rotary;
2NC 2NO DPDT Center Neutral; 0.5 in -
14NPT conduit

Order Lever Separately

Actual product appearance may vary.

Features

- Wide variety of operating heads
- Field adjustable operating modes, for reduced inventory
- Convenience of on-the-spot adjustment instructions
- Complete choice of circuitry and electrical rating options
- Plug-in and non plug-in versions have identical operating characteristics and are dimensionally interchangeable
- Manifold (rear-wire) version
- Explosion-proof versions
- Low temperature versions to -40°C (-40°F)
- Captive head and body screws
- Designed to withstand seismic shock
- Stainless steel (NEMA 4X) versions
- Pre-leaded cable or pre-wired connector types
- Epoxy filled wash down (NEMA 6P) types
- Completely fluorocarbon (FC) sealed versions

Description

Potential Applications

- Machine Tools
- Material Handling
- Packaging
- Presses
- Pulp and Paper
- Welding
- PLC Interface

Sensing and Control offers the world's most advanced line of MICRO SWITCH™ heavy-duty limit switches. These switches include boss-and-socket head design for secure head-to-body retention, unique all-metal drive train for consistent operating characteristics even at high temperature (lasts longer without the need for frequent adjustment than drive trains with plastic parts,) self-lifting pressure plate terminals save wiring time, easily identified grounding terminal (inside) for compliance with OSHA and other regulatory agency standards, one piece flat gasket (seals better than gaskets that go around curves and corners, does not contact terminal pins to reduce chances of fluid migration,) front mounting and interchangeability of single- and double-pole switches, plug-in and non plug-in with one another and with other switch brands, tracking interchangeability of actuator levers for single- and double-pole switches, plug-in and non plug-in, twin shaft seals for an extra measure of protection, inner FC O-ring seal, outer Buna-N seal (all FC available,) FC shaft and diaphragm seals on side rotary switches, rugged corrosion-resistant zinc head and body are phosphate treated and epoxy finished, exclusive teller tab assures proper torque (when it cannot be moved the lever is tight enough to prevent slippage) and domestic and international conduit taps.

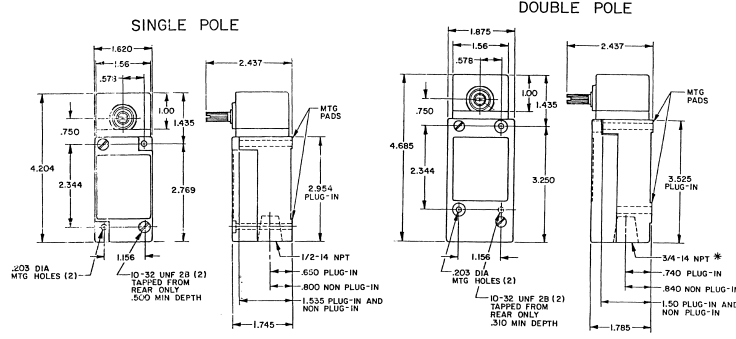
Product Specifications	
Availability	Global
Operating Force (O.F.)	0,45 N m max. [4 in lb max.]
Pretravel (P.T.)	18° max.
Overtravel (O.T.)	57° min.
Differential Travel (D.T.)	10° max.
Product Type	MICRO SWITCH™ Heavy-Duty Limit Switches
Actuator	Side Rotary
Lever Style	Lever Not Included - Reference Lever Required Accessory
Circuitry	2NC 2NO Double-Pole Double-Throw, Center-Neutral, Snap-Action, Double-Break
Ampere Rating	10 A (Thermal)
Supply Voltage	600 Vac and 250 Vdc max.
Housing Material	Zinc Die-Cast
Termination Type	0.5 in - 14NPT conduit
Housing Type	HDLS Non Plug-in
Series Name	HDLS
Sealing	NEMA 1, 3, 4, 4X, 6, 6P, 12, 13
Approvals	UL listed, CSA Certified, CE Certified, CCC Certified
CSA File #	LR57326/Master Contract 152457
UL File #	E37138
Operating Temperature Range	-1 °C to 121 °C [30 °F to 250 °F]
Comment	SPDT-DB each direction (Pole 1 operates CCW / Pole 2 operates CW);
Agency Approvals and Standards	EN60947-1, EN60947-5-1
UNSPSC Code	302119
UNSPSC Commodity	302119 Switches and controls and relays

Sealed

Industrial

OPERATING CHARACTERISTICS	LSA	LSR	LSN	LSP	LSH
	MOMENTARY	MOMENTARY LOW TORQUE	MAINTAINED	MOMENTARY LOW PRETRAVEL AND DIFF. TRAVEL	MOMENTARY LOW PRETRAVEL AND LOW TORQUE
PRETRAVEL(MAX)	15°	15°	15°	60°	140°
DIFFERENTIAL TRAVEL(MAX)	SINGLE POLE	DOUBLE POLE	DOUBLE POLE	SINGLE POLE	DOUBLE POLE
TOTAL TRAVEL (EEP)	75°	75°	90°	75°	75°
OPERATING TORQUE(MAX)	4 IN. LBS	1.7 IN. LBS	4 IN. LBS	4 IN. LBS	1.7 IN. LBS
OVERTRAVEL(MIN)	5°	18° STEP 15"	18°	15°	NOT APPLICABLE
OPERATING CHARACTERISTICS	LSU	LSL	LSM	LS7	LS5
	LOW PRETRAVEL	SEQUENCE DOUBLE POLE ONLY	CENTER NEUTRAL DOUBLE POLE ONLY	MOMENTARY	GRAVITY RETURN
PRETRAVEL(MAX)	5°	18° STEP 15"	18°	15°	NOT APPLICABLE
OVERTRAVEL(MIN)	5°	2ND STEP 15" ADD'L	5°	5°	NOT APPLICABLE
OPERATING TORQUE(MAX)	4 IN. LBS	4 IN. LBS	4 IN. LBS	12 IN-OZ	5 IN-OZ
TOTAL TRAVEL (EEP)	75°	75°	75°	75°	75°
OPERATING TORQUE(MAX)	4 IN. LBS	4 IN. LBS	4 IN. LBS	12 IN-OZ	5 IN-OZ

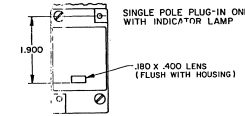
SIDE ROTARY



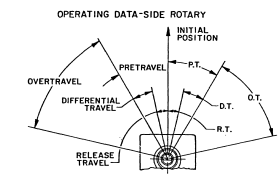
TYPE: LSA1, LSH4, LSN4, LSP1, LSR1, LSA3, LSH3, LSN3, LSP3, LSR3, LSS1, LST1

TYPE: LSA2, LSH2, LSM2, LSN2, LSP2, LSR2, LSA4, LSH4, LSM4, LSN4, LSP4, LSR4

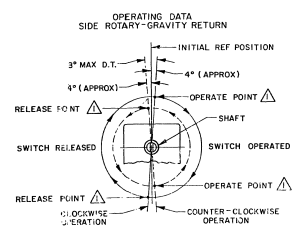
*LSA6, LSH6, LSM6, LSN6, LSP6, LSR6, LSA7, LSH7, LSM7, LSN7, LSP7, LSR7 HAVE 1/2-14 NPT CONDUIT HOLES



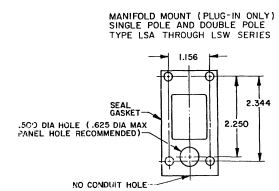
SINGLE POLE PLUG-IN ONLY WITH INDICATOR LAMP
 120 LAMP VOLTAGE - TYPE: LSA5, LSH5, LSN5, LSP5, LSR5
 240 LAMP VOLTAGE - TYPE: LSA8, LSH8, LSN8, LSP8, LSR8



OPERATING DATA-SIDE ROTARY



NOTE: OPERATE AND RELEASE POINTS WILL EXCHANGE LOCATIONS IF SHAFT IS ROTATED 180°



MANIFOLD MOUNT (PLUG-IN ONLY) SINGLE POLE AND DOUBLE POLE TYPE LSA THROUGH LSW SERIES

THIS DRAWING COVERS A PROPRIETARY ITEM AND IS THE PROPERTY OF MICRO SWITCH. IT IS TO BE KEPT UNDER LOCK AND KEY. IT IS NOT TO BE COPIED OR USED WITHOUT THE APPROVAL OF MICRO SWITCH.

MICRO SWITCH
a Honeywell Division

SWITCH - ENCLOSED LSA-LSW SERIES CHART 1

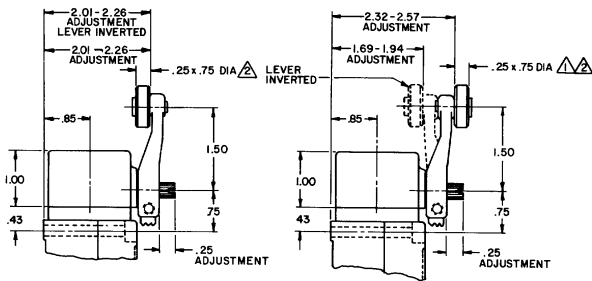
PAGE 1 OF 10
 THIS DRAWING IS THE PROPERTY OF MICRO SWITCH. IT IS TO BE KEPT UNDER LOCK AND KEY. IT IS NOT TO BE COPIED OR USED WITHOUT THE APPROVAL OF MICRO SWITCH.

UNLESS OTHERWISE SPECIFIED TOLERANCES ARE:
 ONE PLACE .003 ±.003
 TWO PLACES .0000 ±.0010
 THREE PLACES .0000 ±.0005
 ANGLES °

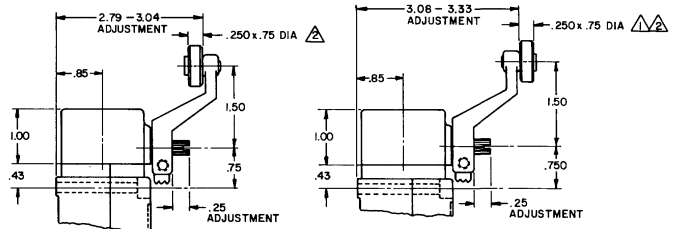
ISO FIRST ANGLE PROJECTION
 SCALE: NPT
 FIRST ANGLE PROJECTION

LSA-LSW SERIES CHART 1
 MICRO SWITCH
 HONEYWELL
 1100 EAST 1000 STREET
 MILWAUKEE, WI 53211-1600
 (414) 765-4000
 FAX (414) 765-4001
 WWW.MICROSWITCH.COM

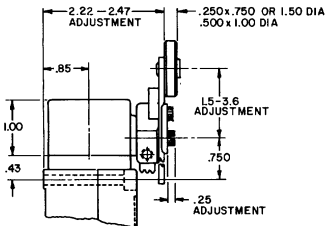
SIDE ROTARY CAM TRACKING



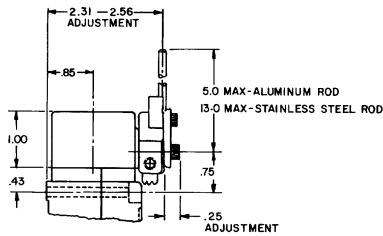
LSZ51 TYPE LEVERS



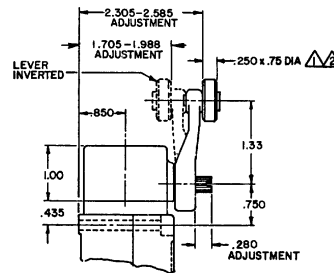
LSZ55 TYPE LEVERS



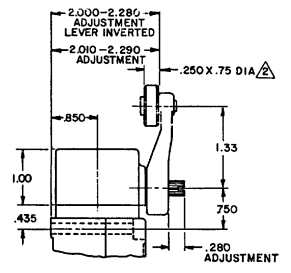
LSZ52 TYPE LEVER



LSZ54 TYPE LEVER



OPEN MOUNTED ROLLER



CLOSED MOUNTED ROLLER

LSZ59 TYPE LEVERS

- NOTES
- △ ALSO AVAILABLE IN Ø.250 X 1.500 NYLON, BUT LEVER CANNOT BE INVERTED
 - △ FOR ADDITIONAL ROLLER WIDTHS AND/OR DIAMETERS REFER TO "M" DRAWING
 - 3 - FOR ADDITIONAL TYPES OF ROLLERS AND LEVERS REFER TO LSZ CHART 1 "M" DRAWING

REVISIONS
 12
 LSA-LSW SERIES CHART 1
 PAGE 2 OF 10
 15 JUN 84
 RAISTER
 10031903
 10031904
 10031905
 10031906
 10031907
 10031908
 10031909
 10031910
 10031911
 10031912
 10031913
 10031914
 10031915
 10031916
 10031917
 10031918
 10031919
 10031920
 10031921
 10031922
 10031923
 10031924
 10031925
 10031926
 10031927
 10031928
 10031929
 10031930
 10031931
 10031932
 10031933
 10031934
 10031935
 10031936
 10031937
 10031938
 10031939
 10031940
 10031941
 10031942
 10031943
 10031944
 10031945
 10031946
 10031947
 10031948
 10031949
 10031950
 10031951
 10031952
 10031953
 10031954
 10031955
 10031956
 10031957
 10031958
 10031959
 10031960
 10031961
 10031962
 10031963
 10031964
 10031965
 10031966
 10031967
 10031968
 10031969
 10031970
 10031971
 10031972
 10031973
 10031974
 10031975
 10031976
 10031977
 10031978
 10031979
 10031980
 10031981
 10031982
 10031983
 10031984
 10031985
 10031986
 10031987
 10031988
 10031989
 10031990
 10031991
 10031992
 10031993
 10031994
 10031995
 10031996
 10031997
 10031998
 10031999
 10032000

MICRO SWITCH a Honeywell Division FED. MFG. CODE 91929		SWITCH - ENCLOSED CATALOG LISTING LSA-LSW SERIES CHART 1	THIRD ANGLE PROJECTION SCALE NONE DO NOT SCALE PRINT UNLESS OTHERWISE SPECIFIED TOLERANCES ARE ONE PLACE (0) ±.030 TWO PLACES (00) ±.015 THREE PLACES (000) ±.005 ANGLES ± WEIGHT
--	--	---	---