

MICRO SWITCH

A DIVISION OF MINNEAPOLIS-HONEYWELL REGULATOR COMPANY
PROGRAM, DARTMOUTH

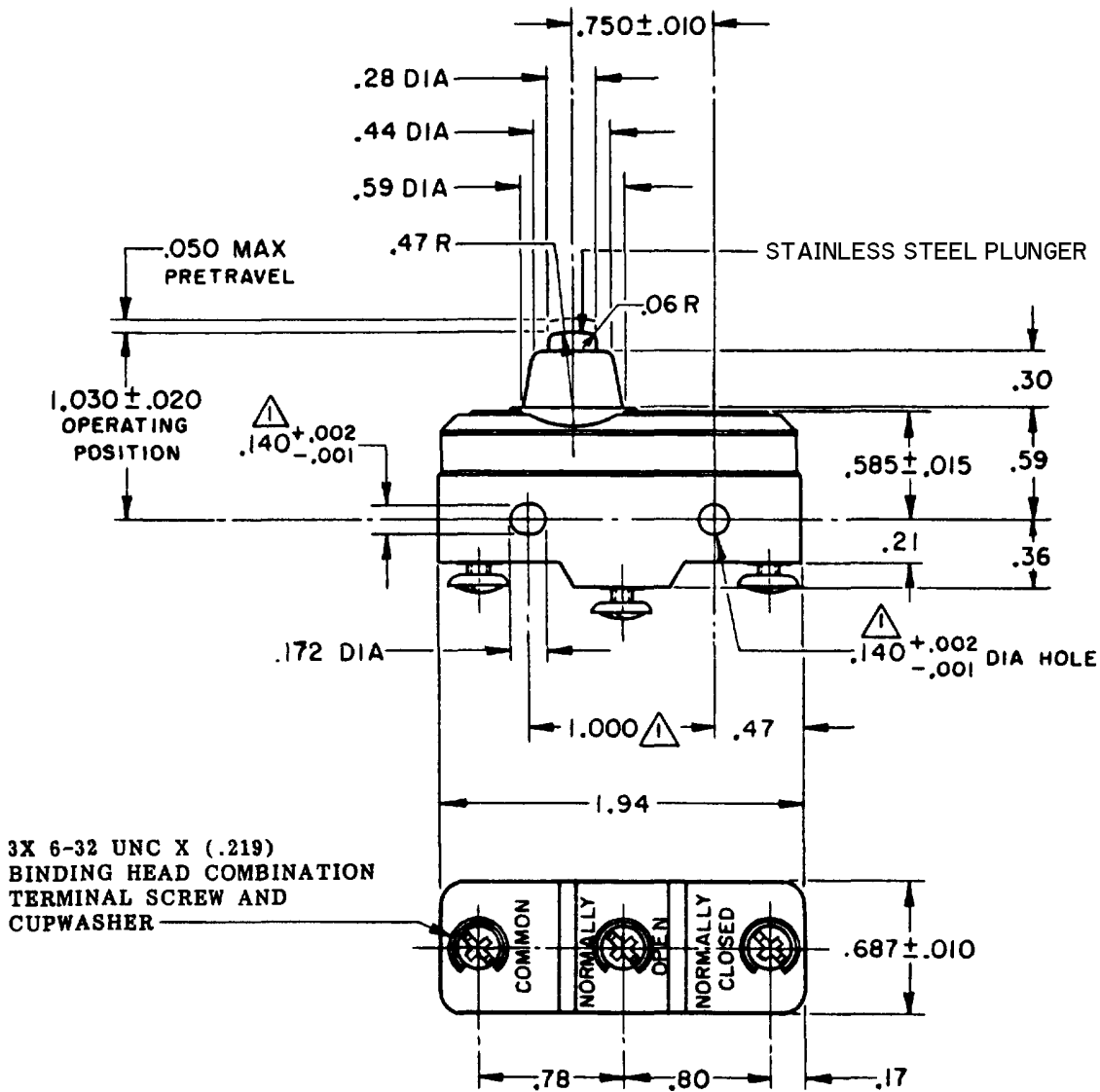
FED. MFR. CODE 91929

SWITCH - BASIC

CATALOG LISTING

BA-2RB-A2

CATALOG LISTING
BA-2RB-A2
 PAGE 1 OF 1
M
 DRAWING NUMBER
 ISSUE 7
 REVISIONS
 A CO 9600
 R R R
 29 APR 80
 B CO34310
 P P K
 20 DEC 74
 C CO-73287-J
 J A L
 22 NOV 93
 D CO-77590
 S A D
 B JUN 94
 E CO93346
 D L T
 22 AUG 98
 F CO-95750-B
 C S L
 29 MAR 00
 FORMTEK
 3-50378
 DRAWN
 R E R
 29 APR 80
 CHECK
 G C H
 9 MAY 80
 CHECK
 (M) BA-2RB-A2
 ISSUE 1
 REPLACES



3X 6-32 UNC X (.219)
BINDING HEAD COMBINATION
TERMINAL SCREW AND
CUPWASHER

NOTE
 ▲ MOUNTING HOLES WILL ACCEPT PINS OR SCREWS
 OF .139 MAX DIA ON 1.000 ± .002 CENTERS

THIS DRAWING COVERS A PROPRIETARY ITEM AND IS THE PROPERTY OF MICRO SWITCH, A DIVISION OF MINNEAPOLIS-HONEYWELL REGULATOR CO. THIS DRAWING IS NOT TO BE COPIED OR USED WITHOUT THE APPROVAL OF MICRO SWITCH.

CHARACTERISTICS	ELECTRICAL DATA	SCALE FULL
OPERATING FORCE ----- 14-22 OZ	CONTACT ARRANGEMENT S P D T	DO NOT SCALE PRINT
RELEASE FORCE ----- 10 OZ MIN	L23 UNDERWRITERS' LAB. INC. LISTED RATING 20A - 125, 250 OR 480 VAC 10A - 125 VAC "IL" 1HP - 125 VAC, 2HP - 250 VAC 1/2A - 125 VDC, 1/4A - 250 VDC	UNLESS OTHERWISE SPECIFIED DIMENSIONS ARE IN INCHES TOLERANCES ARE:
DIFFERENTIAL TRAVEL ----- .002-.0075	L288 L299 L308	ONE PLACE (.0) ± .030 TWO PLACE (.00) ± .015 THREE PLACE (.000) ± .005 ANGLES ±
OVERTRAVEL ----- .094 MIN	20(3)A 250V ~ T85 5E4	WEIGHT .064 LB