

MICRO SWITCH

A DIVISION OF MINNEAPOLIS-HONEYWELL REGULATOR COMPANY
MINNEAPOLIS, MINNESOTA

FED. MFR. CODE 91929

SWITCH - BASIC

BA-2RV22-A2
ISSUE 2

BA-2RV22-A2
PAGE 1 OF 1

M

DRAWING NUMBER

9

ISSUE

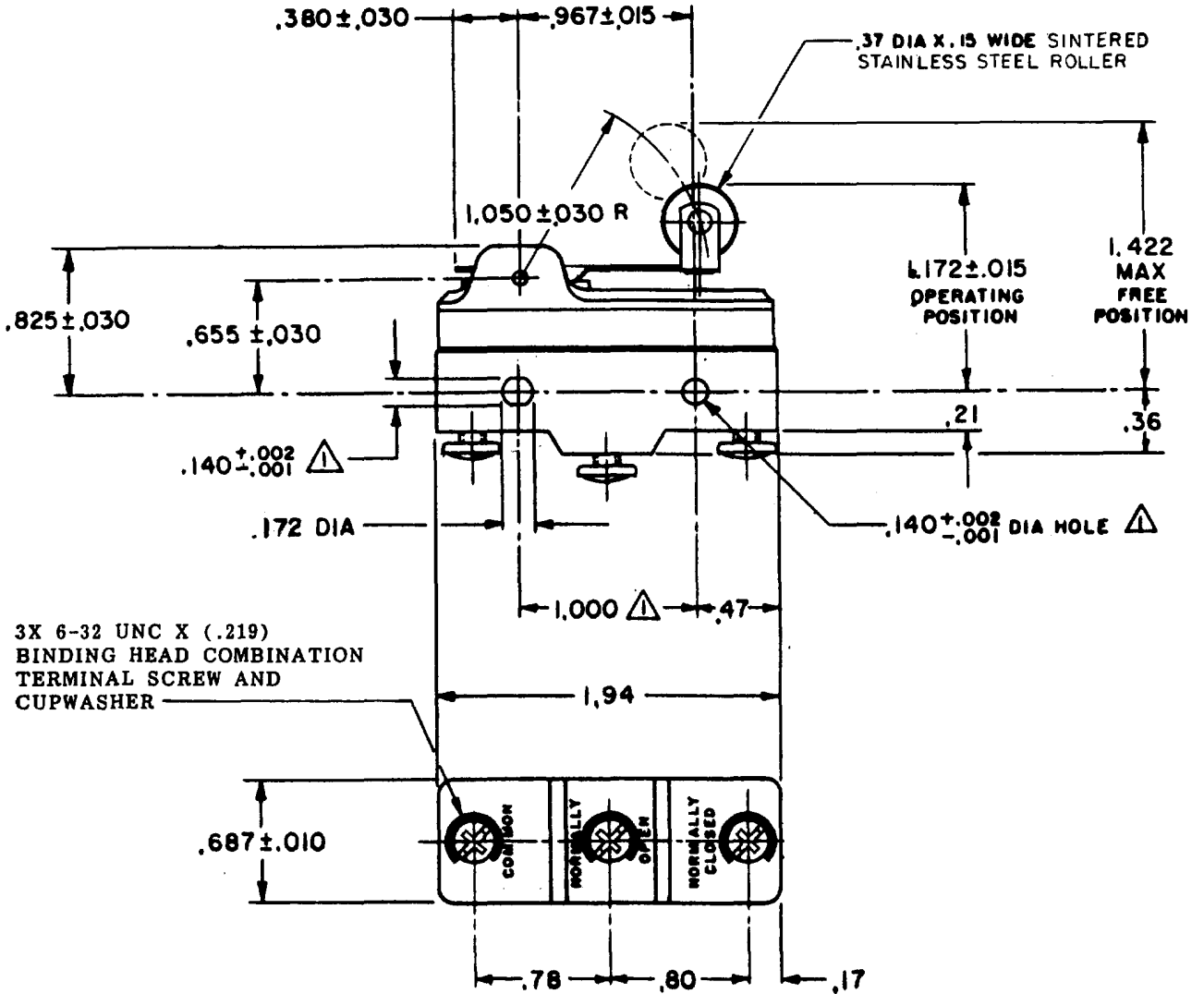
REPLACES

RELEASE NO.

CHECK

REVISIONS

A	CO	15663	8 CH	15 DEC 61
B	CO	70184-6	8 JW	8 MAR 62
C	CO	72397	JJO	30 APR 62
D	CO	73287-J	JAL	22 NOV 63
E	CO	75204B	JWB	1 FEB 64
F	CO	77590	SAD	8 JUN 64
G	CO	093346	DLT	26 AUG 68



3X 6-32 UNC X (.219)
BINDING HEAD COMBINATION
TERMINAL SCREW AND
CUPWASHER

NOTE
▲ - MOUNTING HOLES WILL ACCEPT PINS OR SCREWS
OF .139 MAX DIA ON 1.000 ± .002 CENTERS

THIS DRAWING COVERS A PROPRIETARY ITEM AND IS THE PROPERTY OF MICRO SWITCH, A DIVISION OF MINNEAPOLIS-HONEYWELL REGULATOR CO. THIS DRAWING IS NOT TO BE COPIED OR USED WITHOUT THE APPROVAL OF MICRO SWITCH.

CHARACTERISTICS	ELECTRICAL DATA		SCALE ---- FULL
OPERATING FORCE ----- 6 OZ MAX	CONTACT ARRANGEMENT SPDT	BREAK DISTANCE .020 MIN	DO NOT SCALE PRINT
RELEASE FORCE ----- 1 1/2 OZ MIN	L23 UNDERWRITERS' LAB. INC. LISTED RATING 20A - 125, 250 OR 480 VAC 10A - 125 VAC "L" 1HP - 125 VAC, 2HP - 250 VAC 1/2A - 125 VDC, 1/4A - 250 VDC		UNLESS OTHERWISE SPECIFIED DIMENSIONS ARE IN INCHES TOLERANCES ARE:
PRETRAVEL ----- .250 MAX			ONE PLACE (.0) ± .030
DIFFERENTIAL TRAVEL ----- .045 MAX			TWO PLACE (.00) ± .015
OVERTRAVEL ----- .030 MIN			THREE PLACE (.000) ± .008
	L288		ANGLES ±
	L299		WEIGHT
	L308		
	20(3)A 250V ~ T85 5E4		

FORMTEK

J-50376

DRAWN
GCH 15 DEC 61

CHECK
11 JAN 62
DAW