



11SM23-T



Actual product appearance may vary.

SM Series Subminiature Basic Switch, Single Pole Double Throw (SPDT), 125 Vac, 1 A, Pin Plunger Actuator, Solder Termination

Features

- Long operating life
- Elongated mounting hole for easier, more accurate mounting
- Choice of actuation (plunger, as well as a variety of integral and auxiliary actuators)
- Choice of electrical termination (solder, quick connect, PCB)
- Choice of operating characteristics (sensitive differential travel as low as 0,0254 mm [0.001 in] maximum, low operating force to 0,56 N [2.0 oz] maximum)
- Optional series constructions available (gold contacts for low energy switching, bifurcated gold contacts for maximum reliability, power load switching capability to 11 A)
- MIL-PFR-8805 qualified listings available

Description

MICRO SWITCH™ SM Series subminiature basic switches are used for simple or precision on/off application needs. The MICRO SWITCH™ SM Series switches are slightly larger than the MICRO SWITCH™ SX Series switches. These switches combine small size and light weight with ample electrical capacity, precision operation and long life.

Potential Applications

- Aerospace
- Instrumentation
- Appliances
- Vending machines
- Timing devices
- Office equipment
- Computer/business equipment
- Test instruments
- Medical/dental equipment
- Communications equipment
- HVAC equipment
- Manually operated devices
- Valves

Product Specifications	
Switch Type	MICRO SWITCH™ Subminiature 12,7 mm H x 6,35 mm W x 20,3 mm L [0.5 in H x 0.25 in W x 0.8 in L]
Sealed	No
Ampere Rating	1 A
Circuitry	Single Pole Double Throw (SPDT)
Actuator	Pin Plunger
Termination	Solder
Operating Temperature Range	-55 °C to 125 °C [-67 °F to 257 °F]
Voltage	125 Vac
Approvals	CE,CSA,UL,ENEC
Contact Type	Gold-plated
Operating Force (O.F.)	0,83 N - 1,39 N [3.0 oz - 5.0 oz]
Release Force (R.F.)	0,28 N [1.0 oz] min.
Pretravel (P.T.)	0,5 mm [0.020 in] max.
Overtravel (O.T.)	0,13 mm [0.005 in] min.
Differential Travel (D.T.)	0,1 mm [0.004 in] max.
Operating Position (O.P.)	8,38 mm ± 0,38 mm [0.330 in ± 0.015 in]
Housing Material	General Purpose Phenolic
High Temperature	204 °C [400 °F]
CE mark	61058-1
UL File #	E12252
CSA File #	LR41372
Agency Approvals and Standards	1054
Mounting Centers	9,65 mm [0.38 in]
Maximum Tightening Torque	0,26 N m [2.3 in lb]
Weight	2,72 g [0.006 lb]
Package Height	12,4 mm [0.49 in]
Package Width	6,35 mm [0.25 in]
Package Length	19,8 mm [0.78 in]
Recommended For	Application requiring gold contacts
Comment	Turret type solder terminals.
Availability	Global
UNSPSC Code	30211905
UNSPSC Commodity	30211905 Snap switches
Prod Code (Stock No.)	NA
Series Name	SM



MICRO SWITCH

FREEPORT, ILLINOIS, U.S.A.
A DIVISION OF HONEYWELL

FED. MFG. CODE 91829

SWITCH - BASIC

CATALOG LISTING

IISM23-T

DRAWING NUMBER
IISM23-T

PAGE 1 OF 1
RELEASE NO.

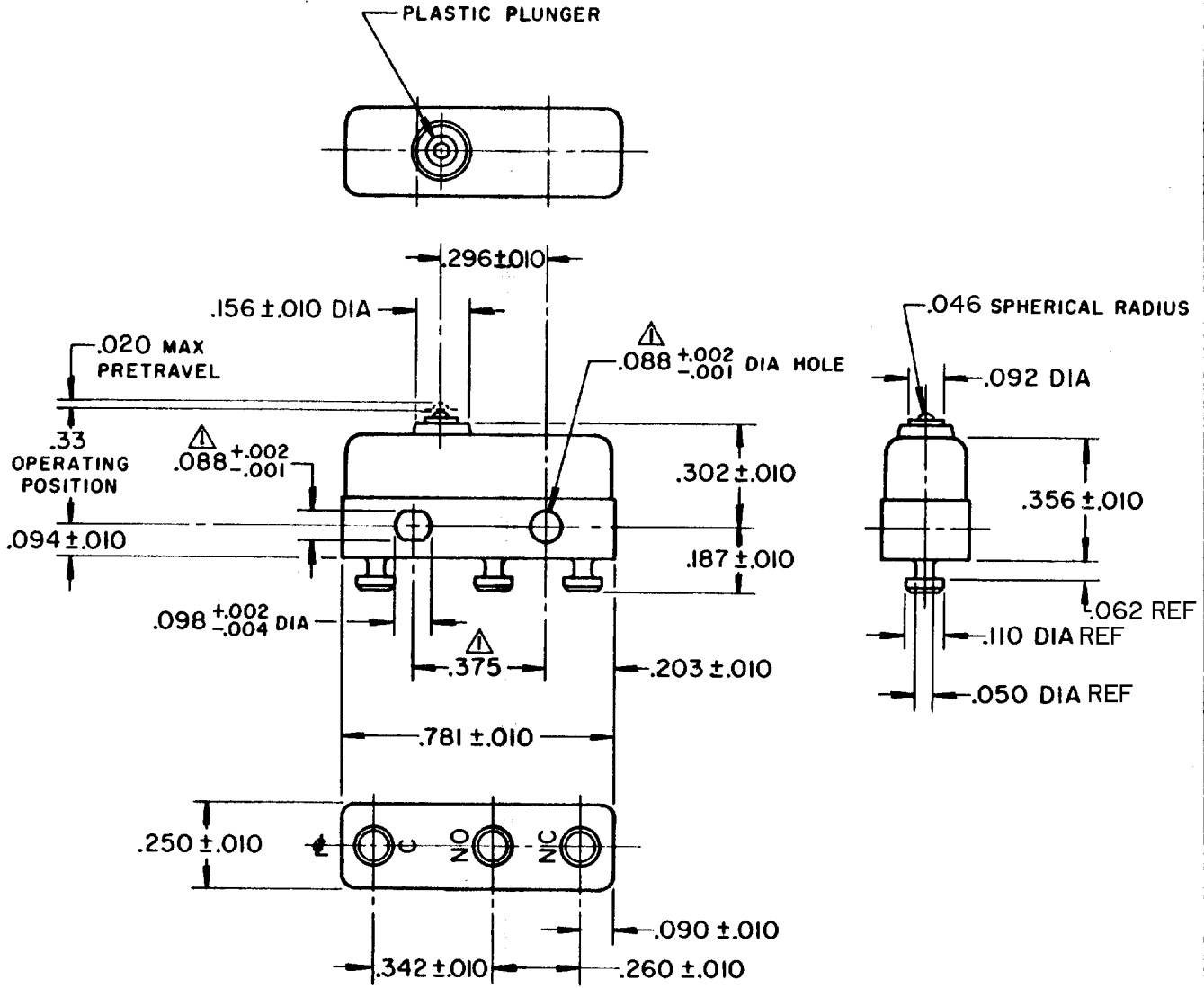
ISSUE
M
6

REVISIONS

A	C022077	GCH	8 DEC 66
B	C029449	SRH	24 FEB 72
C	CO 39105	GLH	22 SEPT 77
D	CO-82803-E	DLT	8 JAN 97
E	CO-95172	JJA	17 JUNE 99

CHECK
LSD
RIDECC

FO-50378
FORMTEK
DRAWN
GCH
8 DEC 66



NOTE -

- ▲-MOUNTING HOLES WILL ACCEPT PINS OR SCREWS OF .087 MAX DIA ON .375 ± .002 CENTERS
- 2-TERMINALS ARE PLATED FOR SOLDERING
- 3-MATING CONTACT SURFACES ARE 24K SOLID GOLD OVERLAY

THIS DRAWING COVERS A PROPRIETARY ITEM AND IS THE PROPERTY OF MICRO SWITCH, A DIVISION OF HONEYWELL. THIS DRAWING IS NOT TO BE COPIED OR USED WITHOUT THE APPROVAL OF MICRO SWITCH.

CHARACTERISTICS

OPERATING FORCE ----- 3-5 OZ

RELEASE FORCE ----- 1 OZ MIN

DIFFERENTIAL TRAVEL ----- .004 MAX

OVERTRAVEL ----- .005 MIN

ELECTRICAL DATA

CONTACT ARRANGEMENT
S P D T

30 VOLTS DC RATING

INDUCTIVE ----- SEA LEVEL ----- 1/2 AMP
50,000 FT ----- 1/2 AMP

RESISTIVE ----- SEA LEVEL ----- 1 AMP
50,000 FT ----- 1 AMP

MAXIMUM INRUSH ----- 2 AMP

SCALE 2 TO 1

DO NOT SCALE PRINT

UNLESS OTHERWISE NOTED

DIMENSIONS ARE IN INCHES

TOLERANCES ARE:

ONE PLACE (.0) ± .030

TWO PLACE (.00) ± .015

THREE PLACE (.000) ± .005

ANGLES ±

UNDERWRITERS' LAB, INC. LISTED RATING
-L22- 1A-125 VAC



WEIGHT .006 LB MAX