



MICRO SWITCH

FREEPORT, ILLINOIS, U.S.A.
A DIVISION OF HONEYWELL

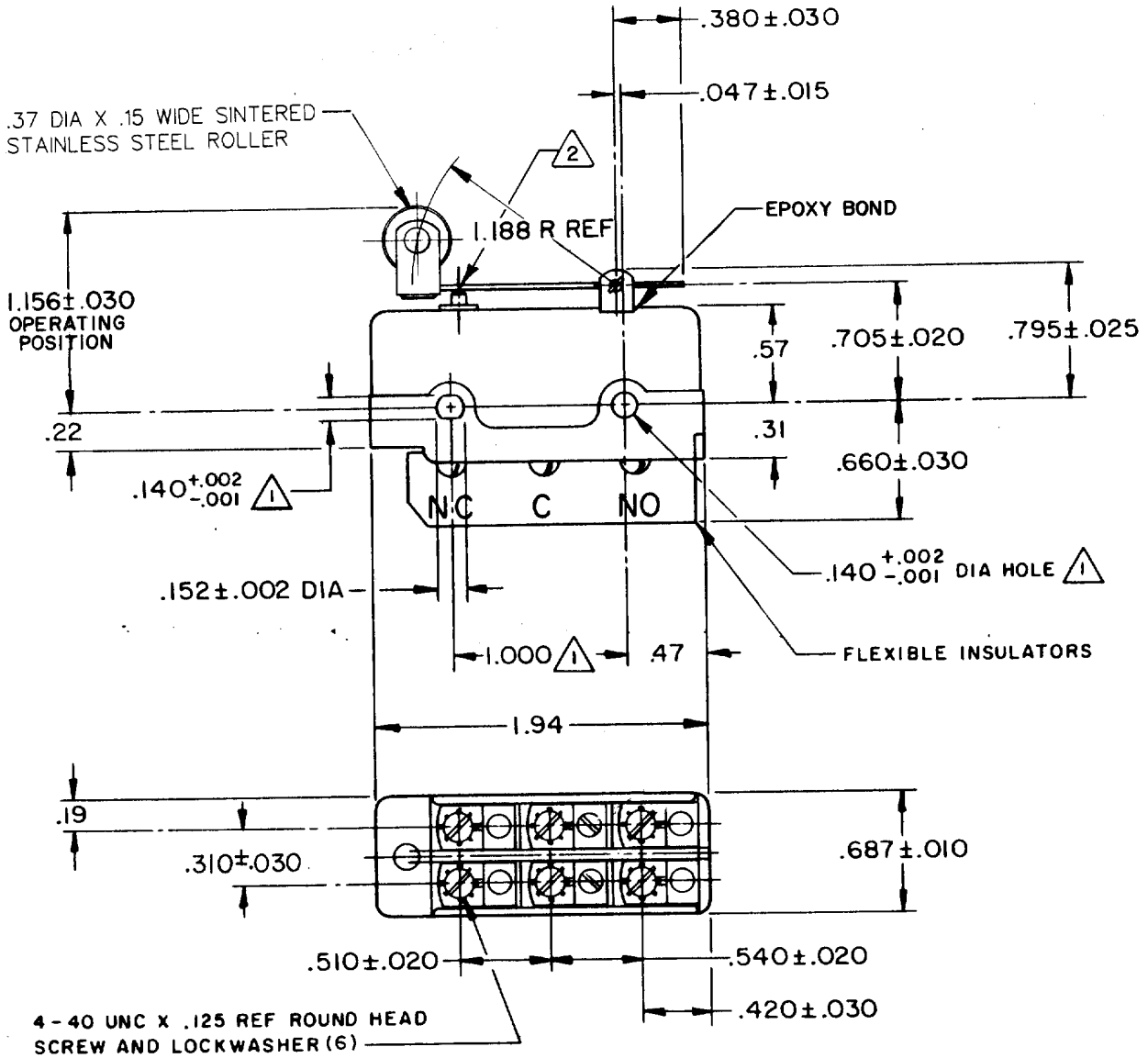
FED. MFG. CODE 91929

SWITCH-BASIC

CATALOG LISTING

DT-2RV212-A7

DT-2RV212-A7
 DRAWING NUMBER
 ISSUE 10X
 17
 18
 19
 REVISIONS
 A CO17725
 L E B
 21 JUN 63
 B CO24941
 M B S
 3 DEC 68
 C CO26075
 M B S
 26 AUG 69
 D CO37528
 C J H
 31 AUG 76
 E CO38280
 K P K
 31 MAR 77
 F CO46028
 W J M
 13 JUN 79
 G CO61634
 T S K
 17 JUL 87
 H CO-
 75204B
 T S M
 1 FEB 94
 CHECK L.S.D.
 22 JUN 63
 21 JUN 63
 21 JUN 63
 DRAWN L E B



NOTE -

1 MOUNTING HOLES WILL ACCEPT PINS OR SCREWS OF .139 MAX DIA ON 1.000 ± .002 CENTERS

2 OVERTRAVEL TO BE MEASURED AT CENTER LINE OF PLUNGER

THIS DRAWING COVERS A PROPRIETARY ITEM AND IS THE PROPERTY OF MICRO SWITCH, A DIVISION OF MINNEAPOLIS-HONEYWELL REGULATOR CO. THIS DRAWING IS NOT TO BE COPIED OR USED WITHOUT THE APPROVAL OF MICRO SWITCH.

CHARACTERISTICS	ELECTRICAL DATA	SCALE FULL
OPERATING FORCE ----- 9-15 OZ	CONTACT ARRANGEMENT D P D T	DO NOT SCALE PRINT
RELEASE FORCE ----- 1 1/2 OZ MIN	UL LISTED-FILE E12252	UNLESS OTHERWISE NOTED
PRETRAVEL ----- .130 MAX	CODE L59	DIMENSIONS ARE IN INCHES
DIFFERENTIAL TRAVEL ----- .050-.085	10A-125 OR 250 VAC	TOLERANCES ARE:
OVERTRAVEL ----- 2 .005 MIN	0.3A-125 VDC; 0.15A-250 VDC	ONE PLACE (.0) ±.030
	SP	TWO PLACE (.00) ±.015
		THREE PLACE (.000) ±.005
		ANGLES ±
		WEIGHT .085 LB