

# Honeywell

FED.MFG.CODE 91929

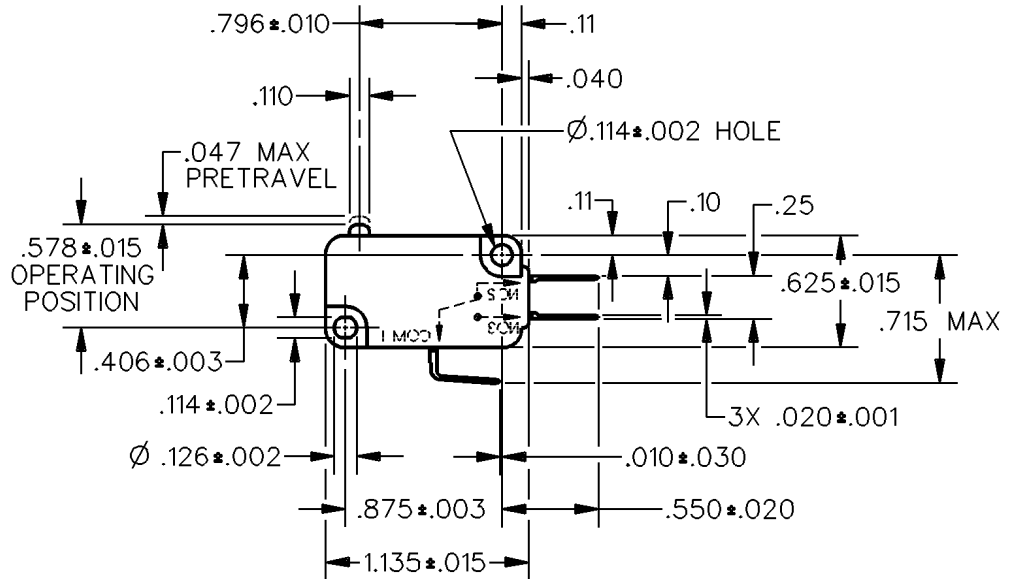
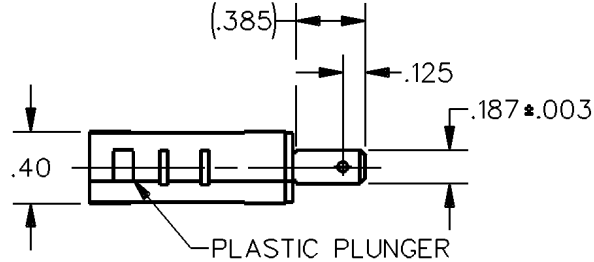
## SWITCH-BASIC

CATALOG LISTING  
**V7-6C17D8**

**CW-C6018**

CATALOG LISTING  
**V7-6C17D8**  
 ISSUE **M**  
**4**

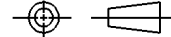
REPLACES PR-19692  
 CHECK 11 JUL 08  
 CHECK 17 JAN 92  
 CHECK W J C  
 CHECK 10 JAN 92  
 DRAWN RASTER



ANSI Y14.5M-1982 APPLIES

THIS DRAWING COVERS A PROPRIETARY ITEM AND IS THE PROPERTY OF HONEYWELL. THIS DRAWING IS NOT TO BE COPIED OR USED WITHOUT THE APPROVAL OF HONEYWELL.

THIRD ANGLE PROJECTION



CHARACTERISTICS	ELECTRICAL DATA	SCALE	DO NOT SCALE PRINT
OPERATING FORCE — — — 6-14 OZ MAX	CONTACT ARRANGEMENT S P D T	UNLESS OTHERWISE SPECIFIED TOLERANCES ARE	ONE PLACE (.0) ± .030
RELEASE FORCE — — — — — 4 OZ MIN	15.1A 1/2HP 125, 250, 277 VAC 1/2A 125 VDC; 1/4A 250 VDC 5A 125 VAC "L"		TWO PLACE (.00) ± .015
DIFFERENTIAL TRAVEL — — — .002-.010			THREE PLACE (.000) ± .005
OVERTRAVEL — — — — — .040 MIN			ANGLES ±
FREE POSITION — — — — — .625 MAX			WEIGHT
RELEASE TRAVEL — — — — — .010 MIN	L215		