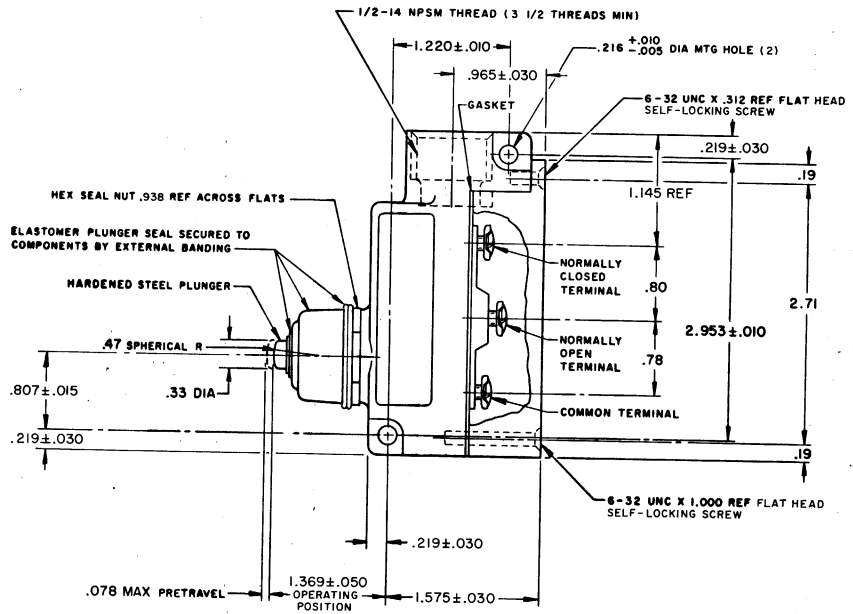
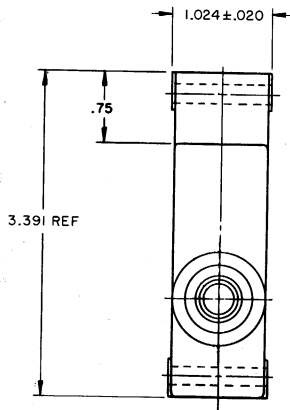


MICRO SWITCH
 FREEPORT, ILLINOIS, U.S.A.
 A DIVISION OF HONEYWELL
 FED. MFG. CODE 91225

SWITCH - ENCLOSED

CATALOG LISTING
BZGI-2RN



BZGI-2RN
 M
 ISSUE 3
 REVISIONS
 A 027223
 M B S
 14 APR 70
 B 1341
 R E S
 17 JUL 70
 C 037475
 S B
 24 SEP 70
 D 067624
 S B
 18 JUN 92
 E 072977
 S S W
 8 MAR 97
 H 7775
 S B
 17 MAR 94
 0198276-003
 DRAWN
 OMAW 25 FEB 70
 CHECKED
 BAW
 15 MAR 70
 CHECKED
 WHE
 5 MAR 70
 CHECKED
 PR-1341
 RELEASED

THIS DRAWING COVERS A PROPRIETARY ITEM AND IS THE PROPERTY OF MICRO SWITCH, A DIVISION OF MINNEAPOLIS-HONEYWELL REGULATOR CO. THIS DRAWING IS NOT TO BE COPIED OR USED WITHOUT THE APPROVAL OF MICRO SWITCH.

CHARACTERISTICS	ELECTRICAL DATA	SCALE FULL
OPERATING FORCE ----- 9-24 OZ	CONTACT ARRANGEMENT S P D T	DO NOT SCALE PRINT
RELEASE FORCE ----- 4 OZ MIN	15A-125, 250 OR 480 VAC, 2A-600 VAC 1/8HP-125 VAC, 1/4HP-250 VAC CODE L74 1/2A-125 VDC, 174A-250 VDC	UNLESS OTHERWISE NOTED
DIFFERENTIAL TRAVEL ----- .002 MAX		DIMENSIONS ARE IN INCHES
OVERTRAVEL ----- .219 MIN		TOLERANCES ARE:
SWITCH-BASIC REPLACEMENT ----- BZ-2RN770		ONE PLACE (.01) ± .030 TWO PLACE (.001) ± .018 THREE PLACE (.000) ± .008 ANGLE 2
		WEIGHT

NOTE -
 1 - 6-32 UNC X .219 REF BINDING HEAD TERMINAL SCREW AND CUPWASHER (3)