



### 3AC6



*Actual product appearance may vary.*

**AC Series Door Switch, Single Pole Double Throw Circuitry, 15 A at 250 Vac, Rod Actuator, Silver Contacts, Screw Termination**

#### Features

- Automatically cuts power when service door or drawer is opened
- Choice of momentary, maintained or pull-to-heat actuation
- Versatile mounting bracket for side or end mounting
- Current rating ranges from 5 A to 25 A
- Available with one or two SPDT switches
- UL recognized versions available
- Choice of termination

#### Potential Applications

- Appliances
- Vending machines
- Office equipment
- Computer/business equipment
- Test instruments
- Medical/dental equipment
- Communications equipment
- HVAC equipment

#### Description

MICRO SWITCH™ AC Series Door Switches are used for simple or precision on/off application needs. They enable circuit testing with POWER ON by manually pulling a rod actuator to the maintained-ON position. Closing the door resets the switch.

| Product Specifications      |   |
|-----------------------------|---|
| Switch Type                 | Door 38,1 mm H x 12,7 mm W x 38,1 mm L [1.5 in H x 0.5 in W x 1.5 in L] |
| Sealed                      | No  |
| Ampere Rating               | 15 A  |
| Circuitry                   | Single Pole Double Throw (SPDT)   |
| Actuator                    | Rod   |
| Termination                 | Screw   |
| Operating Temperature Range | -18 °C to 149 °C [-65 °F to 300 °F]                                     |
| Voltage                     | 250 Vac   |
| Contact Type                | Silver  |
| Operating Position (O.P.)   | 5,16 mm [0.203 in] min.   |
| Free Position (F.P.)        | 9,53 mm [0.375 in] max.   |

|                  |  |
|------------------|--|
| Housing Material | Stainless Steel Bracket, Stainless Steel Rod |
| Weight           | 41,73 g [.092 lb]                            |
| Package Height   | 46,0 mm [1.81 in]                            |
| Package Width    | 12,7 mm [.50 in]                             |
| Package Length   | 50,0 mm [1.97 in]                            |
| Availability     | Global                                       |
| UNSPSC Code      | 30211905                                     |
| UNSPSC Commodity | 30211905 Snap switches                       |
| Series Name      | AC   |

---

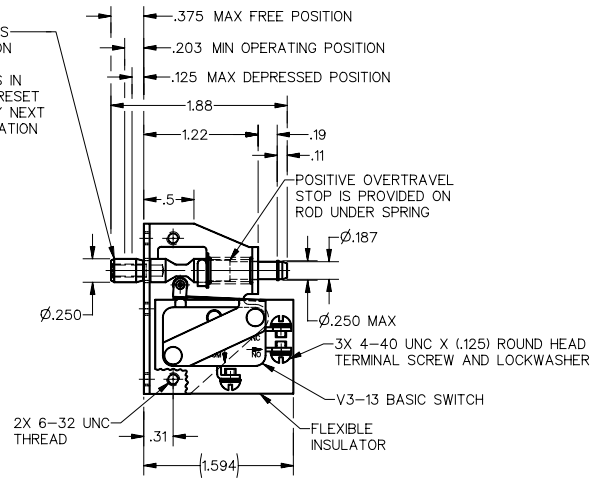
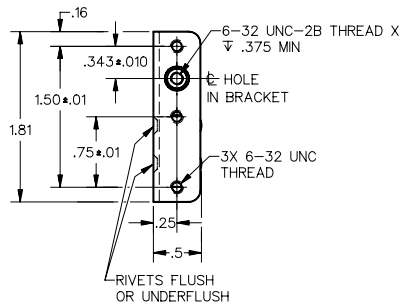
**MICRO SWITCH**  
a Honeywell Division  
FED. MFG. CODE 91924

ASSEMBLY-SWITCH

CATALOG LISTING  
**3AC6**  
KC-C0070

CATALOG LISTING  
3AC6  
PAGE 1 OF 1  
ISSUE  
13  
DDM/CAD  
DRAWN  
K D R  
9 SEP 96  
CHECK  
96

PUSH TO OPERATE—RETURNS  
AUTOMATICALLY TO POSITION  
SHOWN  
PULL TO OPERATE—REMAINS IN  
OPERATED POSITION UNTIL RESET  
FOR AUTOMATIC RETURN BY NEXT  
FULL STROKE "PUSH" OPERATION



- NOTES
- 1 - NOTCH IN ACTUATOR ROD WILL PERMIT .035 DISPLACEMENT BETWEEN END OF ROD AND HOLE IN BRACKET
  - 2 - PLASTIC PARTS ARE MADE OF MINERAL FILLED PHENOLICS
  - 3 - WITH ROD IN EITHER ACTUATED POSITION, BASIC SWITCH PLUNGER MUST HAVE .010 MIN OVERTRAVEL AND WITH ROD IN FREE POSITION BASIC SWITCH PLUNGER MUST HAVE .005 MIN RELEASE TRAVEL

THIS DRAWING COVERS A PROPRIETARY ITEM AND IS THE PROPERTY OF MICRO SWITCH, A DIVISION OF HONEYWELL. THIS DRAWING IS NOT TO BE COPIED OR USED WITHOUT THE APPROVAL OF MICRO SWITCH

THIRD ANGLE PROJECTION

| CHARACTERISTICS       |  |
|-----------------------|--|
| TOTAL TRAVEL          | .250 APPROX PUSH DIRECTION<br>.187 APPROX PULL DIRECTION |
| FULLY DEPRESSED FORCE | --- 4 LB MAX   |

| ELECTRICAL DATA            |  |
|----------------------------|--|
| CONTACT ARRANGEMENT        |  |
| S P D T                    |  |
| 15.1A 1/2HP 125 OR 250 VAC |  |
| 1/2A 125 VDC, 1/4A 250 VDC |  |
| 5A 125 VAC "L"             |  |

| SCALE FULL                                |         |
|---|---------|
| DO NOT SCALE PRINT                        |         |
| UNLESS OTHERWISE SPECIFIED TOLERANCES ARE |         |
| ONE PLACE (.0)                            | ±.030   |
| TWO PLACE (.00)                           | ±.015   |
| THREE PLACE (.000)                        | ±.005   |
| ANGLES                                    | ±       |
| WEIGHT                                    | .092 LB |

ANSI Y14.5M-1982 APPLIES