

MICRO SWITCH
a Honeywell Division

FED. MFG. CODE 91929

**MINIATURE PRECISION
LIMIT SWITCH**

CATALOG LISTING

914CE18-Q

914CE18-Q

M

DRAWING
NUMBER

1

ISSUE

REPLACES

RELEASE NO. CO-69061

CHECK

REVISIONS

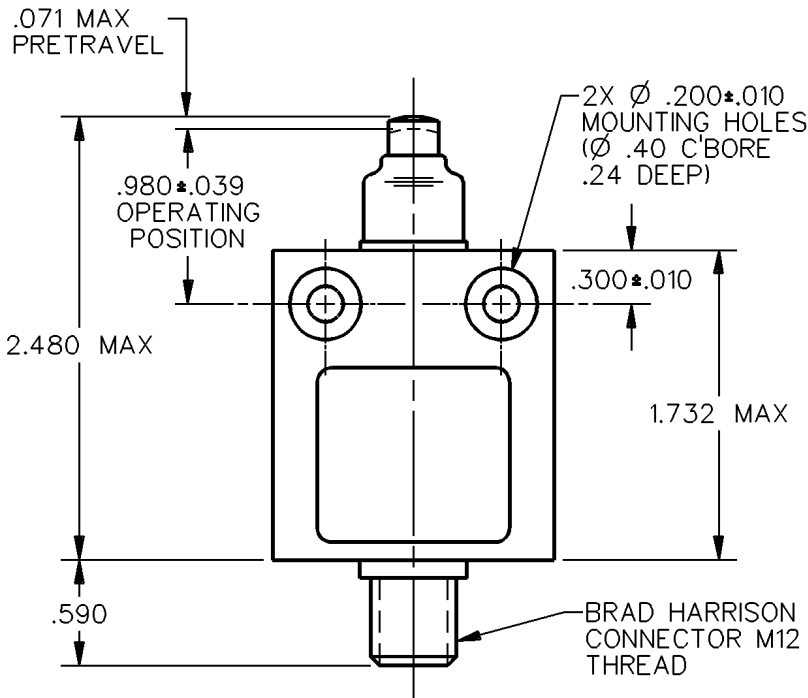
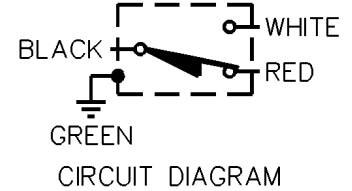
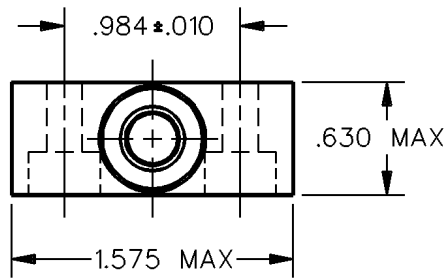
CHECK

CHECK

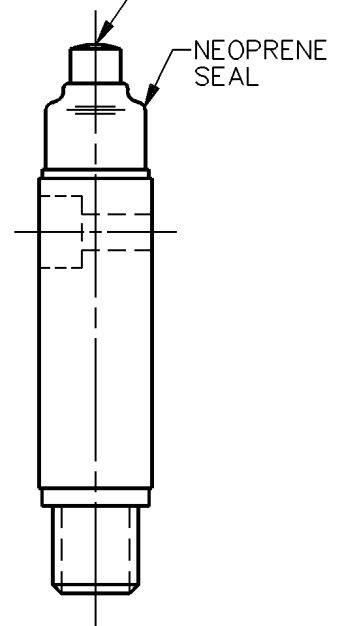
S A V 11 OCT 91

DDM/CAD

DRAWN



Ø.280 STAINLESS
STEEL PLUNGER

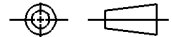




NOTES
1 - ZINC HOUSING FINISHED WITH GRAY PAINT

ANSI Y14.5M-1982 APPLIES

THIS DRAWING COVERS A PROPRIETARY ITEM AND IS THE PROPERTY OF MICRO SWITCH, A DIVISION OF HONEYWELL. THIS DRAWING IS NOT TO BE COPIED OR USED WITHOUT THE APPROVAL OF MICRO SWITCH.

THIRD ANGLE PROJECTION



CHARACTERISTICS	ELECTRICAL DATA	SCALE	FULL	DO NOT
		ONE PLACE	(.0)	SCALE PRINT
OPERATING FORCE — — — — 5 LB MAX	CONTACT ARRANGEMENT S P D T	UNLESS OTHERWISE SPECIFIED TOLERANCES ARE		
DIFFERENTIAL TRAVEL — — — .004 MAX	5A - 250 VAC 1/10HP - 125 OR 250 VAC	TWO PLACE	(.00)	±.015
OVERTRAVEL — — — — .118 MIN		THREE PLACE	(.000)	±.005
	 	ANGLES		±
		WEIGHT		