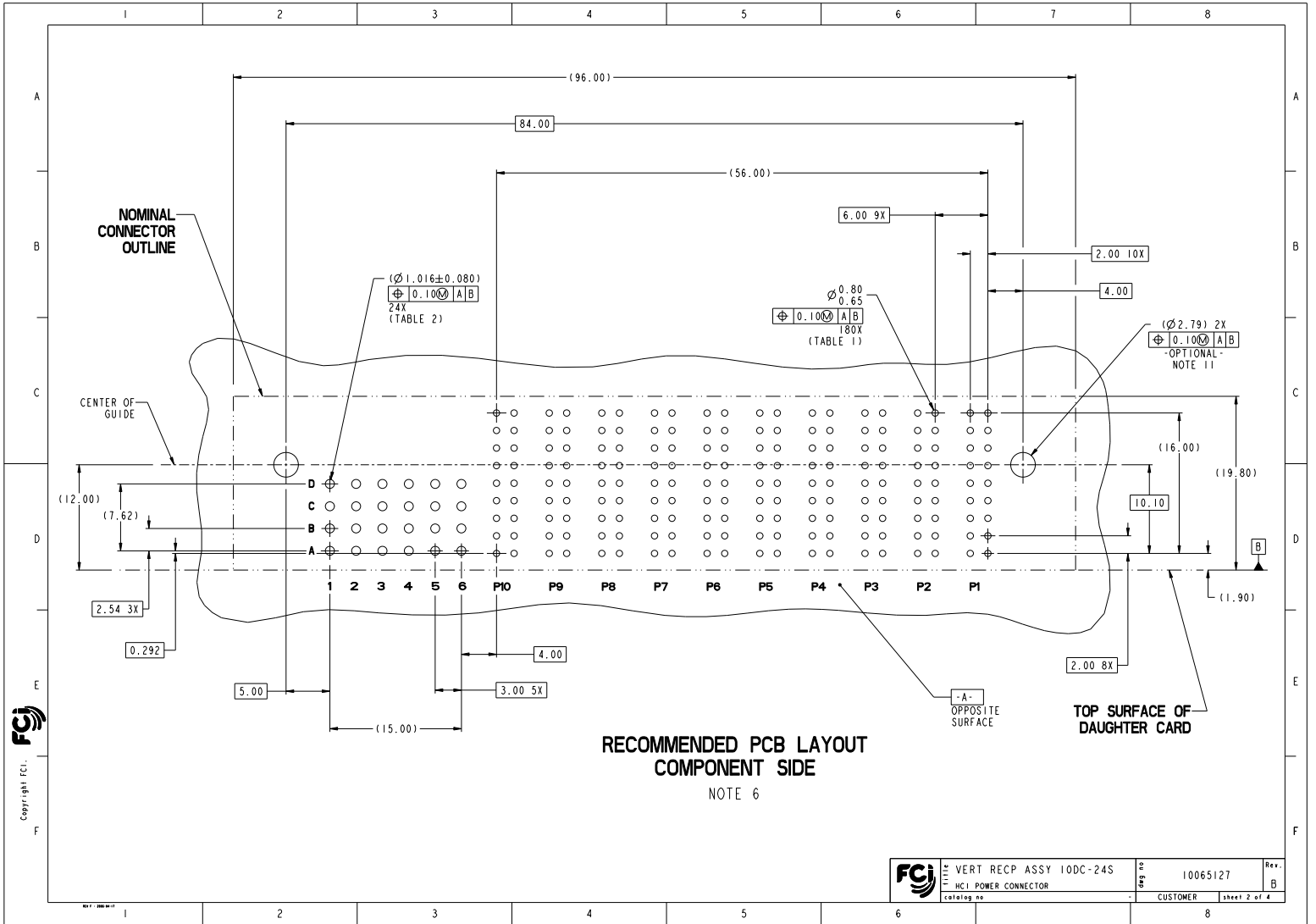


www.fciconnect.com		Surface	ASME Y14.5	Tolerance	ASME Y14.5	Projection	MM
TOLERANCES UNLESS OTHERWISE SPECIFIED		ANGULAR	LINEAR	ANGULAR	LINEAR	A2	Scale 3:1
Rev	Rev. no	Dr	Date	Dr	Date	ECN	Spec ref
A	1008-0243	TN	2008-04-03	Chr	H. NGO	2007-02-28	-
B	1009-0193	NO	2009-06-11	Appr	H. NGO	2007-02-28	-
FCI		VERT RECP ASSY 10DC-24S		10065127		Rev. B	
FCI		HC1 POWER CONNECTOR		CUSTOMER		sheet 1 of 4	

PDM: Rev:B STATUS:Released Printed: Dec 18, 2010




**RECOMMENDED PCB LAYOUT
COMPONENT SIDE**
NOTE 6

	VERT RECP ASSY 10DC-24S HC1 POWER CONNECTOR	10065127 CUSTOMER	Rev. B
	sheet 2 of 4	sheet 2 of 4	sheet 2 of 4

PDM: Rev:B STATUS:Released Printed: Dec 18, 2010

Copyright FCI

	1	2	3	4	5	6	7	8						
A														
	TABLE 1 (HCl POWER) PLATED THROUGH-HOLE REQUIREMENTS													
	TOP LAYER DESCRIPTION	DRILLED HOLE DIAMETER	COPPER THICKNESS	TIN-LEAD THICKNESS	NICKEL THICKNESS	GOLD THICKNESS	TIN THICKNESS	SILVER THICKNESS	FINISHED HOLE DIAMETER					
B	TIN-LEAD	0.81-0.86 (0.85 DRILL)	0.025 - 0.050	0.005 - 0.015	--	--	--	--	0.65 - 0.80					
	IMMERSION TIN	0.81-0.86 (0.85 DRILL)	0.025 - 0.050	--	--	--	0.9 - 1.5um	--	0.70 - 0.80					
	IMMERSION SILVER	0.81-0.86 (0.85 DRILL)	0.025 - 0.050	--	--	--	--	0.15 - 0.65um	0.70 - 0.80					
	COPPER (SEE NOTE 9)	0.81-0.86 (0.85 DRILL)	0.025 - 0.050	--	--	--	--	--	0.70 - 0.80					
	GOLD	0.81-0.86 (0.85 DRILL)	0.025 - 0.050	--	0.003 - 0.007	FLASH UP TO 0.0002	--	--	0.69 - 0.80					
C	TABLE 2 (HPC SIGNALS) PLATED THROUGH-HOLE REQUIREMENTS													
	TOP LAYER DESCRIPTION	DRILLED HOLE DIAMETER	COPPER THICKNESS	TIN-LEAD THICKNESS	NICKEL THICKNESS	GOLD THICKNESS	TIN THICKNESS	SILVER THICKNESS	FINISHED HOLE DIAMETER					
	TIN-LEAD	1.125-1.175 (\varnothing .0453 \pm .0010)	0.025-0.050	0.005-0.015	--	--	--	--	0.94 - 1.10 (\varnothing .040 \pm .003)					
	IMMERSION TIN			--	--	--	--	--						
	IMMERSION SILVER			--	--	--	--	--						
	COPPER (SEE NOTE 9)			--	--	--	--	--						
	GOLD			--	--	--	--	--						
D														
E														
F														
	 <table border="1" style="display: inline-table; vertical-align: middle;"> <tr> <td>VERT RECP ASSY 10DC-24S</td> <td>REV. B</td> </tr> <tr> <td>HCl POWER CONNECTOR</td> <td>10065127</td> </tr> <tr> <td>CUSTOMER</td> <td>sheet 3 of 4</td> </tr> </table>								VERT RECP ASSY 10DC-24S	REV. B	HCl POWER CONNECTOR	10065127	CUSTOMER	sheet 3 of 4
VERT RECP ASSY 10DC-24S	REV. B													
HCl POWER CONNECTOR	10065127													
CUSTOMER	sheet 3 of 4													
	1	2	3	4	5	6	7	8						

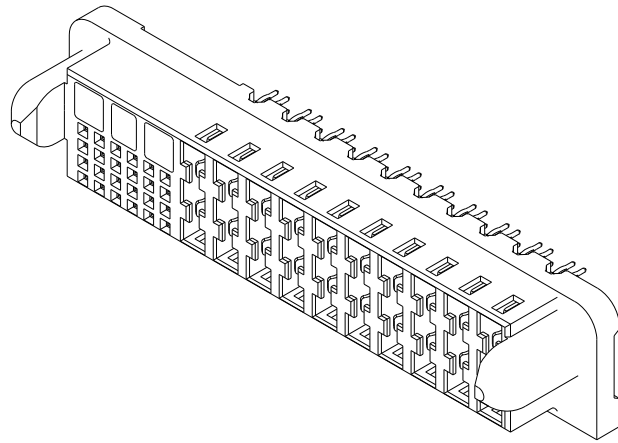
PDM: Rev:B

STATUS:Released

Printed: Dec 18, 2010

Copyright FCI

PART NUMBER	M2.5 SCREW NOTE 11	TAIL PLATING	TAIL TYPE
10065127-001	OPTIONAL	SnPb	PRESS-FIT
10065127-001LF	OPTIONAL	Sn	PRESS-FIT



NOTES:

1. CONNECTOR MATERIALS:
HOUSING: HIGH TEMPERATURE THERMOPLASTIC, BLACK
UL 94V-0 COMPLIANT
CONTACTS: HIGH PERFORMANCE COPPER ALLOY
2. CONTACT FINISH (ref GS-12-380 SECTION 5.2)
3. PRODUCT SPECIFICATION: GS-12-380.
4. APPLICATION SPECIFICATION: GS-20-070.
5. PRODUCT MARKING (PRODUCT NUMBER & DATE CODE) ON HOUSING IN AREA SHOWN.
6. MINIMUM NOMINAL PCB THICKNESS: 1.6mm
7. PACKAGING MEETS FCI SPECIFICATION GS-14-1073.
8. HOUSING COMPONENT WILL WITHSTAND EXPOSURE TO 260°C
PEAK TEMPERATURE FOR 60 SECONDS IN A CONVECTION, INFRA-RED,
OR VAPOR PHASE REFLOW OVEN.
9. COPPER PLATING THICKNESS IN CENTER OF VIA-HOLE CAN BE
NO MORE THAN 0.003 LESS THAN OTHER AREAS.
10. ALL HOLE SIZES ARE FINISHED HOLE SIZES.
11. RECOMMENDED RETENTION TO PCB:
Ø0.110(2.79) THRU HOLE (UNPLATED) FOR M2.5 SELF THREADING SCREW, MAX
HEAD Ø0.171(4.50).
RECOMMENDED SCREW LENGTH 0.276(7.00) + PCB THICKNESS.
RECOMMENDED SCREW SEATING TO PCB TORQUE: 2-5 lbf-in (2300-5760 gf-cm).

Copyright FCI

FCI LITICE coloring no	VERT RECP ASSY 10DC-24S	org no	10065127	Rev.
	HC1 POWER CONNECTOR	CUSTOMER	sheet 4 of 4	B

PDM: Rev:B

STATUS:Released

Printed: Dec 18, 2010