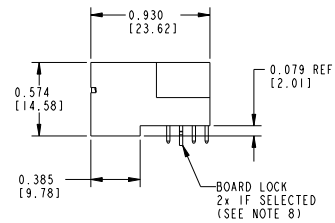
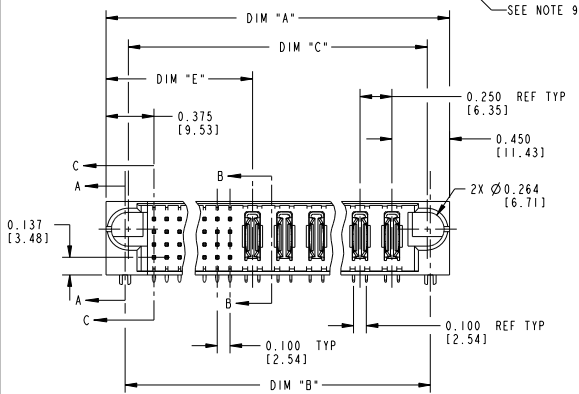
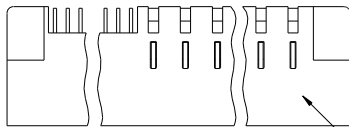


Tous droits strictement réservés. Reproduction ou communication à des tiers sans autorisation écrite du propriétaire. Property of FCJ. Droit de reproduction FCJ.



All rights strictly reserved. Reproduction or issue to third parties in any form or by any means without written authority from the proprietor. Property of FCJ. Copyright FCJ.

PRODUCT NUMBER
51721- A00CCDDEF... NOTE (1)
SEE NOTE 1



mat'l code		tolerances unless otherwise specified		CUSTOMER	www.fcjconnect.com
SEE NOTE 2				COPY	
lfr	ecn no.	dr	date	linear	projection
H	DG05-0132	SJ	06/02/05	.XX±.01/.XX±.3	
J	DG05-0479	CS	11/18/05	.XXX±.005/.XX±.13	
K	DG06-0011	CS	01/13/06	.XXX±.0020/.XX±.051	title
L	DG06-0252	JMG	06/27/06	angles	RIGHT ANGLE HEADER w/GUIDE PIN SIGNAL / POWER
M	DG06-0367	JULIA	09/07/06	DR	product family
N	DG08-0239	JC	09/11/08	engr	PWRBLADE
				chr	code
				appd	213
					size
					dwg no
					51721
					SHEET
					1 OF 3

THIS FILE WAS ORIGINALLY CREATED IN THE PRO ENGINEER ENVIRONMENT AND ANY FUTURE REVISIONS TO THIS FILE MUST BE MADE IN THE PRO ENGINEER ENVIRONMENT

form no. 7530-001-I03

1 | 2

3 |

cage code 22526

4

PDM: Rev:N

STATUS:Released

Printed: Dec 20, 2010

Tous droits strictement réservés. Reproduction ou communication à des tiers sans autorisation écrite du propriétaire. Property of FCJ. Droit de reproduction FCJ.



All rights strictly reserved. Reproduction or issue to third parties in any form or by any means without written authority from the proprietor. Property of FCJ. Copyright FCJ.

PRODUCT NUMBER	DIM	LENGTH FORMULAS (SEE NOTE 10)
51721- A00CCDDEF.. NOTE 1	DIM "A"	.100 [2.54] x (CCC/4) + .250 [6.35] x DD + .650 [16.51] (NOTE 10)
SEE NOTE 1	DIM "B"	.100 [2.54] x (CCC/4) + .250 [6.35] x DD + .350 [8.89]
	DIM "C"	.100 [2.54] x (CCC/4) + .250 [6.35] x DD + .300 [7.62]
	DIM "E"	.100 [2.54] x (CCC/4) + .450 [11.43]
	DIM "F"	.100 [2.54] x (CCC/4) + .250 [6.35] x DD + .680 [17.27]
	DIM "H"	.100 [2.54] x (CCC/4) + .250 [6.35]

CONNECTOR NOTES

1. PRODUCT NUMBER CODE:
51721 - A 00 CCC DD E F LF
- NO THIS SUFFIX: 100u"/2.54um SnPb ON PCB INTERFACE
 - ADD THIS SUFFIX: 78u"/2.00um Sn ON PCB INTERFACE
 - RETENTION TO PCB (NOTE 8)
 - TAIL OPTIONS (NOTE 7)
 - NUMBER OF RIGHT END POWER CONTACTS (NOTE 6)
 - NUMBER OF SIGNAL CONTACTS (NOTE 5)
 - ALWAYS ZERO (NOTE 4)
 - PLATING (NOTE 3)
 - BASE NUMBER
2. HOUSING MATERIAL: GLASS FILLED V-0 HIGH TEMP THERMO PLASTIC.
SIGNAL CONTACT MATERIAL: COPPER ALLOY
POWER CONTACT MATERIAL: COPPER ALLOY
3. PLATING OPTION:
I = SEE PRINT 10064183 FOR PLATING SPEC OF 51721-100CCDDEF; 51721-100CCDDEFLF
4. THIS PART NOT AVAILABLE WITH LEFT SIDE POWER CONTACTS.
5. SIGNAL CONTACTS, 004 TO 148 AVAILABLE.
6. RIGHT END POWER CONTACTS, 01 TO 20 AVAILABLE.
MAXIMUM OF 20 POWER CONTACTS PER CONNECTOR.
7. TAIL OPTIONS:
A : .135 [3.43] SOLDER TO BOARD
8. RETENTION TO PCB OPTIONS:
A = BOARD LOCK (REQUIRES .098 + .002, -.001 [2.49 + 0.05, -0.03] THRU HOLE IN PCB).
MOUNTING FOOT THICKNESS: .220 [5.59]
B = .150 [3.81] THRU HOLE (REQUIRES .158 ± .003 [4.01 ± 0.08] THRU HOLE IN PCB).
MOUNTING FOOT THICKNESS: .160 [4.06]
9. MANUFACTURE'S NAME, P/N, AND DATE CODE TO APPEAR ON THIS SURFACE.
10. THE MAXIMUM OVERALL LENGTH (DIM A) OF A PART IS 8.00 [203.2]
11. PRODUCT SPECIFICATION GS-12-149
12. REFERENCE 51730 FOR SELECT LOAD/FMLB WORKSHEET
- PCB NOTES:
13. ALL DIMENSIONS ARE BASIC UNLESS OTHERWISE SPECIFIED.
14. ALL THROUGH HOLES ARE LOCATED WITH A TRUE POSITION OF .004 [0.10]
15. ALL HOLE DIAMETERS ARE FINISHED HOLE SIZE.
16. Ø 0.0453 ± .001 [1.151 ± 0.02] DRILLED HOLES PLATED WITH 0.0003 [0.007] MIN SnPb OR Sn OVER 0.001 [1.03] TO .003 [0.08] PLATING TO ACHIEVE A .040 ± .003 [1.02 ± 0.08] HOLE.
17. A Δ SYMBOL WILL BE NEXT TO ANY DIMENSION, VIEW, OR NOTE WHICH HAS BEEN MODIFIED WITH THE CURRENT DRAWING REVISION.

THIS FILE WAS ORIGINALLY CREATED IN THE PRO ENGINEER ENVIRONMENT AND ANY FUTURE REVISIONS TO THIS FILE MUST BE MADE IN THE PRO ENGINEER ENVIRONMENT

mat'l code				tolerances unless otherwise specified		CUSTOMER		FCJ	
ltr	ecr no.	dr	date	linear	.XX±.01 / .X±.3	projection	COPY	title	www.fcjconnect.com
N					.XXX±.005 / .XX±.13			RIGHT ANGLE HEADER w/GUIDE PIN	
				angles	.XXX±.0020 / .XX±.051			SIGNAL / POWER	
					0°±2°			product family	PWRBLADE
				dr	CBAROT 05-04-99			size	51721
				eng	J. BROWN 05-04-99			code	213
				chr	J. BROWN 05-04-99			scale	1:1
				appd	J. BROWN 05-04-99			dwg no	51721
sheet index	revision sheet								SHEET 2 OF 3

form no. 7530-001-103

1 | 2

3 |

cage code 22526

4

PDM: Rev:N

STATUS: Released

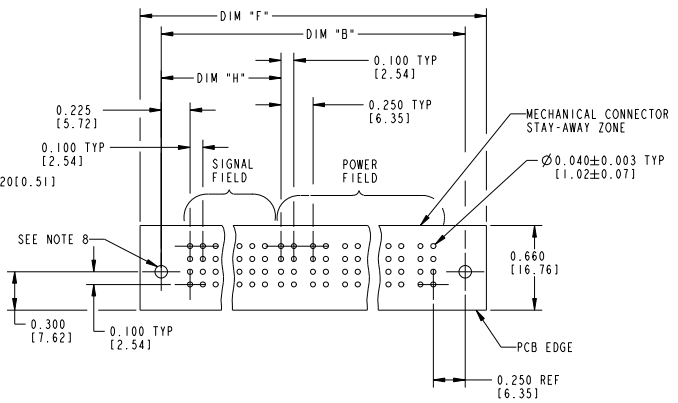
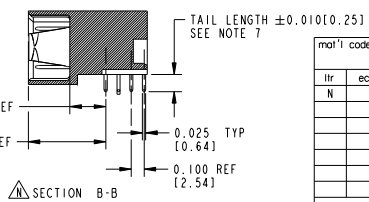
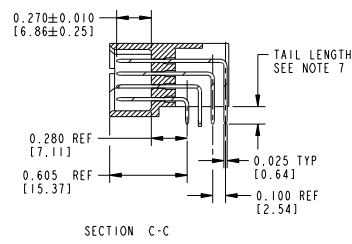
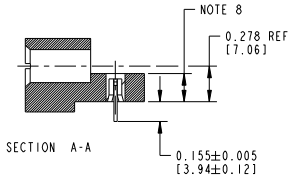
Printed: Dec 20, 2010

PRODUCT NUMBER
51721- A00CCDDEF...
NOTE(1)

Tous droits strictement réservés. Reproduction ou communication à des tiers sans autorisation écrite du propriétaire. Property of FCJ. Droit de reproduction FCJ.



All rights strictly reserved. Reproduction or issue to third parties in any form or by any means without written authority from the proprietor. Property of FCJ. Copyright FCJ.



mat'l code				tolerances unless otherwise specified		CUSTOMER		FCJ		www.fcjconnect.com	
lfr	ecr no.	dr	date	linear	.XX±.01 / .X±.3	projection	COPY	title			
N				angles	.XXX±.005 / .XX±.13			RIGHT ANGLE HEADER w/GUIDE PIN			
				DRDLE	05-10-00			SIGNAL / POWER			
				eng	J. BROWN 05-10-00	INCH / MM		product family		code	
				chr	J. BROWN 05-10-00	scale		size		213	
				appd	J. BROWN 05-10-00	1:1		51721		SHEET 3 OF 3	
sheet index	revision	sheet						cage code		22526	

form no. 7530-001-103

cage code 22526