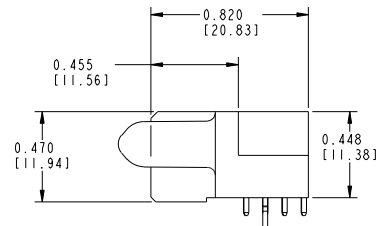
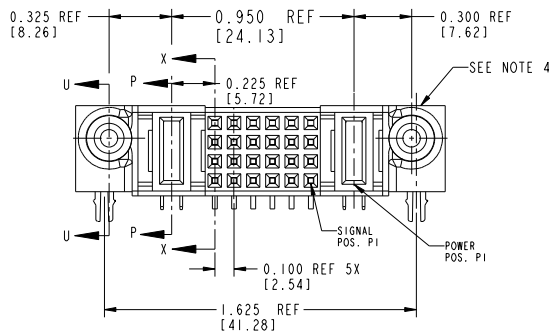
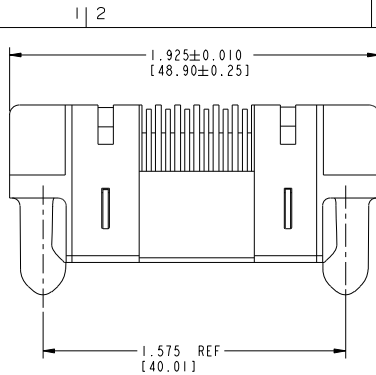


Tous droits strictement réservés. Reproduction ou communication o des tiers interdite sans autorisation écrite du propriétaire. Property of FCI. Droits de reproduction FCI.



All rights strictly reserved. Reproduction or issue to third parties in any form or by any means without written authority from the proprietor. Property of FCI. Copyright FCI.

PRODUCT NUMBER
51416-00X-
NOTE ③



THIS FILE WAS ORIGINALLY CREATED IN THE PRO ENGINEER ENVIRONMENT AND ANY FUTURE REVISIONS TO THIS FILE MUST BE MADE IN THE PRO ENGINEER ENVIRONMENT

mal't code				SEE NOTES		tolerances unless otherwise specified		CUSTOMER		FCI	
lfr	ecn no.	dr	date	linear	.XX ± .01/ .X ± .3	projection	COPY	www.fciconnect.com			
A	V90563	CHB	02-18-99		.XXX ± .005/ .XXX ± .13			title			
B	V90919	SAR	04-14-99	angles	.XXX ± .0025/ .XXX ± .051			IP + 24S + IP			
C	V94029	CHB	10-08-99		° ± 2°			RIGHT ANGLE SOLDER RECEPT			
D	V01376	EKK	06-08-00					product family			
E	DG05-0049	SW	03-17-05	dr	LEVEL 4	01-12-99		PwrBlode			
F	DG05-0230	LH	07-19-05	enr	J. BROWN	01-12-99		size			
G	DG08-0239	JC	09/12/08	chr	J. BROWN	01-12-99		dwg no			
				appd	J. BROWN	01-12-99		code			
sheet index	revision sheet	G	G	G	G	G		213			
		1	2	3	4	5		sheet			
								1 of 5			

Pro/E 3 coge code 22526 4

PDM: Rev:G

STATUS:Released

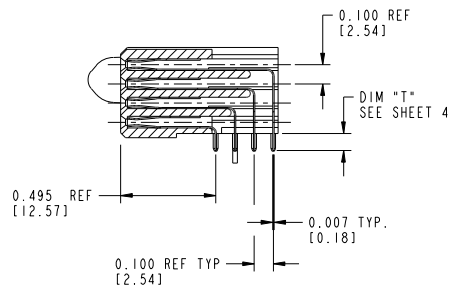
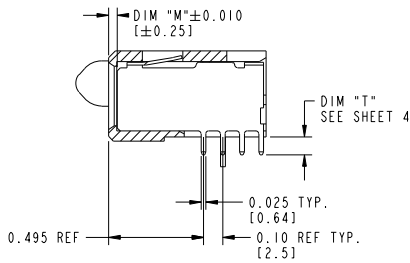
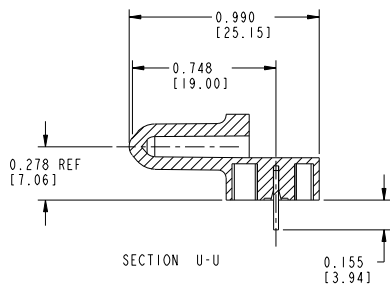
Printed: Dec 20, 2010

Tous droits strictement réservés. Reproduction ou communication à des tiers interdite sans autorisation écrite du propriétaire. Propriété de FCJ. Droits de reproduction FCJ.



All rights strictly reserved. Reproduction or issue to third parties in any form or by any means without written authority from the proprietor. Property of FCJ. Copyright FCJ.

PRODUCT NUMBER
51416-00X
NOTE ③



SECTION P-P

mat'l code		SEE NOTES		tolerances unless otherwise specified		CUSTOMER		FCJ	
lit	ecm no.	dr	date	linear	.XX ± .01 / X ± .3	projection	COPY	www.fcjconnect.com	
G				angles	.XXX ± .005 / XX ± .13			title	
				or	.XXX ± .0025 / XX ± .051			IP + 24S + IP	
				eng	° ± 2°	scale		RIGHT ANGLE SOLDER RECEPT	
				chr				product family	PwrBlode
				appd				size	code
					LEVEL 4	01-12-99		51416-001	213
					J. BROWN	01-12-99			sheet
					J. BROWN	01-12-99			2
					J. BROWN	01-12-99			
sheet index	revision sheet								

Pro/E

cage code 22526

PDM: Rev:G

STATUS:Released

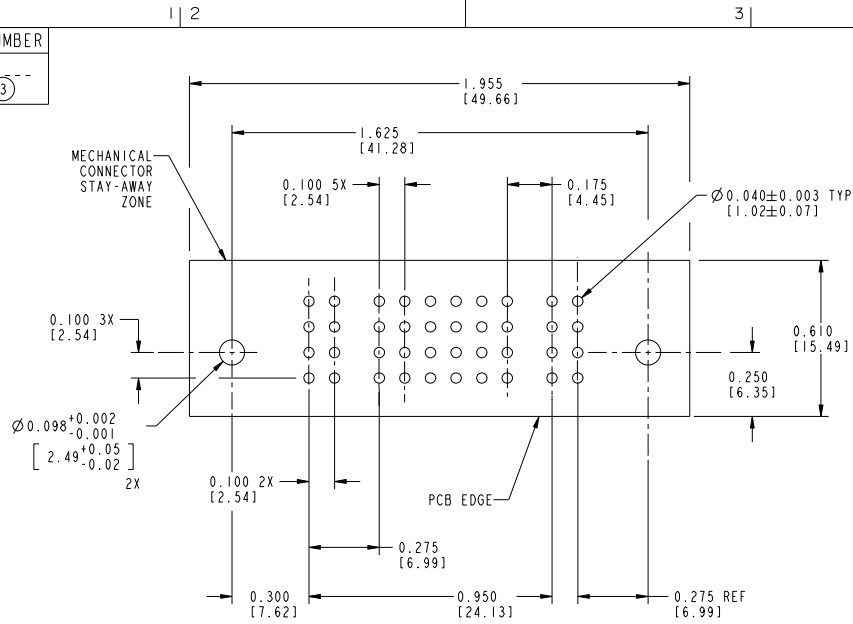
Printed: Dec 20, 2010

Tous droits strictement réservés. Reproduction ou communication à des tiers interdite sans autorisation écrite du propriétaire. Property of FCJ. Droit de reproduction FCJ.



All rights strictly reserved. Reproduction or issue to third parties in any form or by any means without written authority from the proprietor. Property of FCJ. Copyright FCJ.

PRODUCT NUMBER
51416-00X---
NOTE ③



RECOMMENDED PCB LAYOUT

mat'l code		SEE NOTES		tolerances unless otherwise specified		CUSTOMER		FCJ	
lfr	ecn no.	dr	date	linear	.XX ± .01/ .X ± .3	projection	COPY	title	www.fcjconnect.com
G				angles	.XXX ± .005/ .XX ± .13			IP + 24S + IP	
				dr	.XXX ± .0020/ .XX ± .051			RIGHT ANGLE SOLDER RECEPT	
				engr	° ± 2°	INCH/MM		product family	PwrBlade
				ctr	LEVEL 4 01-12-99	scale	3:2	size	code
				appd	J. BROWN 01-12-99			dwg no	213
					J. BROWN 01-12-99			51416	sheet
sheet index	revision sheet								3

1 | 2

Pro/E

3 |

cage code 22526

4

PDM: Rev:G

STATUS:Released

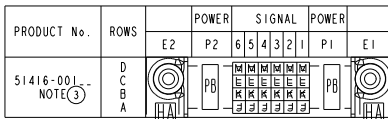
Printed: Dec 20, 2010

Tous droits strictement réservés. Reproduction ou communication à des tiers interdite sans autorisation écrite du propriétaire. Property of FCJ. Droit de reproduction FCJ.

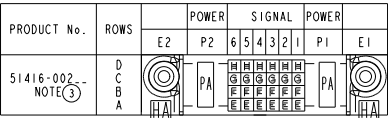


All rights strictly reserved. Reproduction or issue to third parties in any form or by any means without written authority from the proprietor. Property of FCJ. Copyright FCJ.

ITEM NO.	QTY	DIM "M" MATING LENGTH ±.010		DIM "T" TAIL LENGTH +.005-[.13]-.010 [.25]		CONTACT TYPE
PB	2	0.042	[1.07]	0.090	[2.29]	POWER
J	6	N/A	[N/A]	0.090	[2.29]	SIGNAL
K	6	N/A	[N/A]	0.090	[2.29]	SIGNAL
L	6	N/A	[N/A]	0.090	[2.29]	SIGNAL
M	6	N/A	[N/A]	0.090	[2.29]	SIGNAL
HA	2	N/A	[N/A]	N/A	[N/A]	HOLD-DOWN



ITEM NO.	QTY	DIM "M" MATING LENGTH ±.010 [.25]		DIM "T" TAIL LENGTH ±.010 [.25]		CONTACT TYPE
PA	2	0.042	[1.07]	0.135	[3.43]	POWER
E	6	N/A	[N/A]	0.135	[3.43]	SIGNAL
F	6	N/A	[N/A]	0.135	[3.43]	SIGNAL
G	6	N/A	[N/A]	0.135	[3.43]	SIGNAL
H	6	N/A	[N/A]	0.135	[3.43]	SIGNAL
HA	2	N/A	[N/A]	N/A	[N/A]	HOLD-DOWN



mat'l code		SEE NOTES		tolerances unless otherwise specified		CUSTOMER	FCJ
lbr	ecm no.	dr	date	linear	.XX ±.01/ X ±.3	COPY	www.fciconnect.com
G				angles	.XXX ±.005/ .XX ±.13	projection	
					.XXX ±.0020/ .XX ±.051	INCH/MM	
				dr	LEVEL 4 01-12-99	scale	1:1
				eng	J. BROWN 01-12-99		
				chr	J. BROWN 01-12-99		
				appd	J. BROWN 01-12-99		
sheet index	revision sheet						

product family	size	dwg no	code
IP + 24S + 1P	PwrBlade	51416	213
			sheet 4

1 | 2

Pro/E

3 |

cage code 22526

4

PDM: Rev:G

STATUS:Released

Printed: Dec 20, 2010

Tous droits strictement réservés. Reproduction ou communication à des tiers interdite sans autorisation écrite du propriétaire. Property of FCJ. Droit de reproduction FCJ.



All rights strictly reserved. Reproduction or issue to third parties in any form or by any means without written authority from the proprietor. Property of FCJ. Copyright FCJ.

PRODUCT NUMBER
51416-00X--
NOTE ③

NOTES:

1. DIMENSIONS AND TOLERANCES ARE IN ACCORDANCE WITH ASME Y14.5M, 1994 UNLESS OTHERWISE SPECIFIED.

CONNECTOR NOTES:

2. HOUSING MATERIAL: UL 94 V-0 GLASS FILLED HIGH-TEMP THERMOPLASTIC
POWER CONTACT MATERIAL: COPPER ALLOY
SIGNAL PIN MATERIAL: COPPER ALLOY

3. PLATING(51416-00X STAND FOR 51416-001 AND 51416-002)

④ SEE ITEM 5 & 6 IN PRINT 10064183 FOR PLATING SPEC OF 51416-00X AND 51416-00XLF RESPECTIVELY

4. MANUFACTURER'S NAME, P/N, AND DATE CODE TO APPEAR ON THIS SURFACE.

5. PRODUCT SPECIFICATION GS-12-149.
APPLICATION SPECIFICATION BUS-20-067.

PCB NOTES:

6. ALL HOLE DIAMETERS ARE FINISHED HOLE SIZE.

7. MOUNTING HOLES, WHERE APPLICABLE, ARE UNPLATED.

8. $\varnothing.0453 \pm 0.0010$ [1.151 ± 0.025] DRILLED HOLES PLATED WITH $.0003$ [0.008] MIN SnPb OVER $.001$ [0.03] TO $.003$ [0.08] Cu PLATING TO ACHIEVE $\varnothing.040 \pm .003$ [$1.02 \pm .07$] HOLE.

9. "DIM XXX" TO BE DETERMINED BY THE CUSTOMER.

10. CONNECTOR KEEP-OUT ZONE.

11. A Δ SYMBOL WILL BE NEXT TO ANY DIMENSION, VIEW, OR NOTE WHICH HAS BEEN MODIFIED WITH THE CURRENT DRAWING REVISION.

THIS FILE WAS ORIGINALLY CREATED IN THE PRO ENGINEER ENVIRONMENT AND ANY FUTURE REVISIONS TO THIS FILE MUST BE MADE IN THE PRO ENGINEER ENVIRONMENT

mat'l code		SEE NOTES		tolerances unless otherwise specified		CUSTOMER		FCJ	
ltr	ecm no.	dr	date	linear	angles	projection	title	product family	code
G				.XX±.01/0.X±0.3		COPY	IP + 24S + IP	PwrBlode	213
				.XXX±.005/0.XX±0.13			RIGHT ANGLE SOLDER RECEPT		sheet
				.XXX±.0020/0.XX±0.051	0°±2°				5
				gr LEVEL 4	01-12-99	scale	A	51416	
				engr J. BROWN	01-12-99	3:2			
				chr J. BROWN	01-12-99				
				appd J. BROWN	01-12-99				
sheet index	revision sheet								

Pro/E 3 cage code 22526 4

PDM: Rev:G

STATUS:Released

Printed: Dec 20, 2010