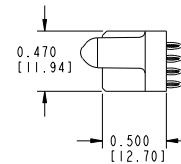
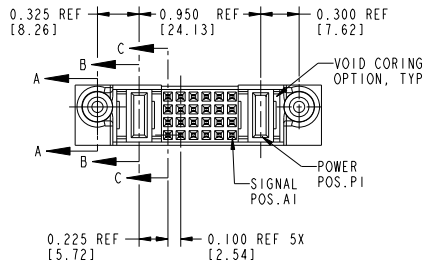
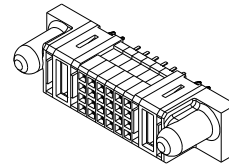
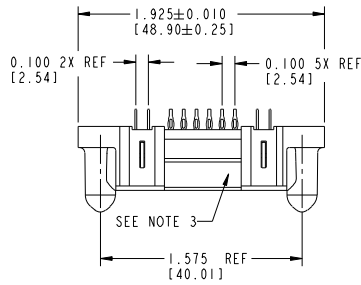


Tous droits strictement réservés. Reproduction ou communication à des tiers interdite sans autorisation écrite du propriétaire. Property of FCJ. Droits de reproduction FCJ.



All rights strictly reserved. Reproduction or issue to third parties in any form or by any means without written authority from the proprietor. Property of FCJ. Copyright FCJ.

PRODUCT NUMBER
51666-001...
Note: ②



mat'l code		NOTE 1		tolerances unless otherwise specified		CUSTOMER		FCJ	
lfr	ecn no.	dr	date	linear	.XX±.01/0.X±0.3	COPY	www.fcjconnect.com		
A	V91433	CHB	06-29-99		.XXX±.005/0.XX±0.13	projection		title IP + 24S + 1P	
B	V00795	EKK	03-27-00	angles	.XXX±.0020/ .XX±.051	INCH/MM		VERTICAL PRESSFIT RECEPTACLE	
C	V01861	EKK	06-26-00		0° ± 2°	scale		product family PWRBLADE code 213	
D	DG05-0171	GucJM	06/19/05	dr	C. BAROT 06-29-99	1:1		size dwg no 51666 sheet 1 of 4	
E	DG05-0390	GucJM	10/14/05	engr	J. BROWN 06-29-99				
F	DG07-0193	JMG	05/11/07	chr	J. BROWN 06-29-99				
				appd	J. BROWN 06-29-99				
sheet index	revision sheet	F	F	F	F				
		1	2	3	4				

Pro/E

cage code 22526

PDM: Rev:F

STATUS:Released

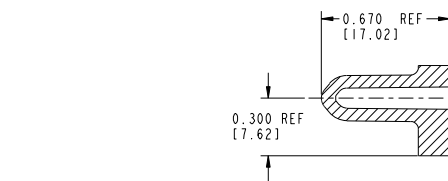
Printed: Dec 20, 2010

Tous droits strictement réservés. Reproduction ou communication o des tiers interdite sans l'écrit autorisation écrite du propriétaire. Propriété de FCJ. Droits de reproduction FCJ.

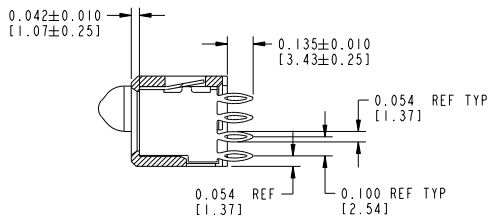


All rights strictly reserved. Reproduction or issue to third parties in any form or by any means without written authority from the proprietor. Property of FCJ. Copyright FCJ.

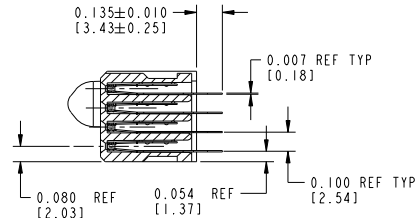
PRODUCT NUMBER
51666-001
NOTE: (2)



SECTION A-A
SCALE 3:2



SECTION B-B



SECTION C-C
SCALE 3:2

mal't code		tolerances unless otherwise specified		CUSTOMER	www.fcjconnect.com
lfr	ecn no.	dr	date	COPY	
F				projection	title
				linear .XX±.01/0.X±0.3	IP + 24S + 1P
				angles .XXX±.005/0.XX±0.13	VERTICAL PRESSFIT RECEPTACLE
				dr C. BAROT 06-29-99	product family
				engr J. BROWN 06-29-99	PWRBLADE
				chr J. BROWN 06-29-99	size
				appd J. BROWN 06-29-99	dwg no
				scale 3:2	51666
sheet index	revision sheet				code
					213
					sheet
					2

Pro/E

code code 22526

PDM: Rev:F

STATUS:Released

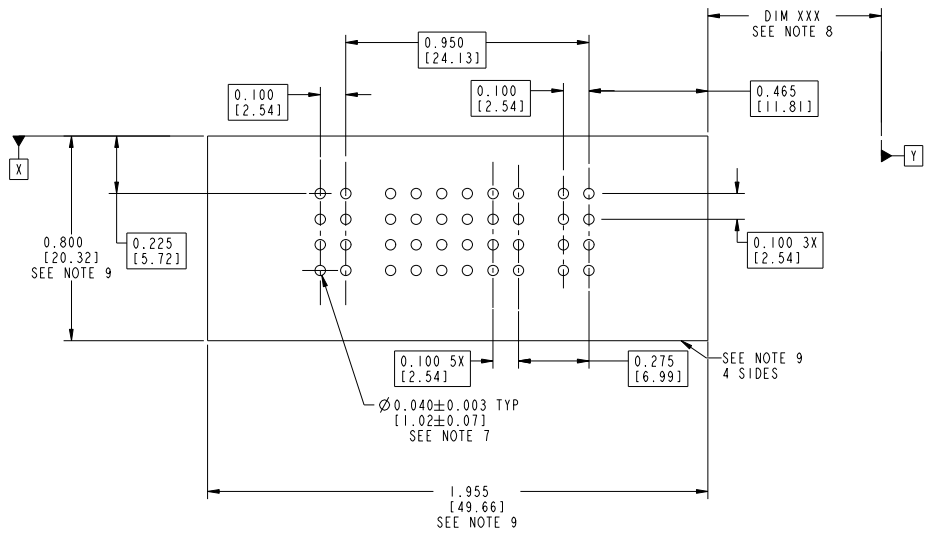
Printed: Dec 20, 2010

Tous droits strictement réservés. Reproduction ou communication à des tiers interdite sans autorisation écrite du propriétaire. Property of FCJ. Droit de reproduction FCJ.



All rights strictly reserved. Reproduction or issue to third parties in any form or by any means without written authority from the proprietor. Property of FCJ. Copyright FCJ.

PRODUCT NUMBER
51666-001
NOTE: (2)



RECOMMENDED PCB LAYOUT

mat'l code		tolerances unless otherwise specified		CUSTOMER	www.fcjconnect.com
lfr	ecm no.	dr	date	COPY	
F				linear .XX±.01/0.X±0.3 .XXX±.005/0.XX±0.13 XXXX±.0020/.XXX±.051	projection
				angles 0° ± 2°	
				dr C. BAROT 06-29-99	title IP + 24S + 1P
				engr J. BROWN 06-29-99	VERTICAL PRESSFIT RECEPTACLE
				chr J. BROWN 06-29-99	product family PWRBLADE
				appd J. BROWN 06-29-99	size dwg no 51666
sheet index	revision sheet			scale 2:1	code 213
					sheet 3

form no. 7530-001-103

Pro/E

cage code 22526

PDM: Rev:F

STATUS:Released

Printed: Dec 20, 2010

Tous droits strictement réservés. Reproduction ou communication à des tiers interdite sans l'autorisation écrite du propriétaire. Property of FCJ. Copyright FCJ. Drais de reproduction FCJ.



All rights strictly reserved. Reproduction or issue to third parties in any form or by any means without written authority from the proprietor. Property of FCJ. Copyright FCJ.

PRODUCT No.	ROWS	POWER		SIGNAL					POWER	ITEM NO.	QTY	CONTACT TYPE	
		E2	P2	6	5	4	3	2	1				P1
51666-001 NOTE: (2)	D C B A		PC	F	F	F	F	F	F	PC	F	24	SIGNAL
				F	F	F	F	F	F		PC	2	POWER

CONNECTOR NOTES:

- HOUSING MATERIAL: GLASS FILLED HIGH TEMP THERMOPLASTIC
FLAME RETARDANT PER UL94 V-0
SIGNAL CONTACT MATERIAL: COPPER ALLOY
POWER CONTACT MATERIAL: COPPER ALLOY
- 51666-001;51666-001LF PLATING SPEC. SEE PRINT:10064183
- MANUFACTURER NAME, P/N, AND DATE CODE TO APPEAR ON THIS SURFACE.

PCB NOTES:

- ALL DIMENSIONS ARE BASIC UNLESS OTHERWISE SPECIFIED
- ALL THROUGH HOLES ARE LOCATED WITH A TRUE POSITION OF 0.004"
- ALL DIAMETERS ARE FINISHED HOLE SIZES
- $\varnothing .0453 \pm .0010$ [$.151 \pm 0.025$] DRILLED HOLES, PLATED WITH $.0003$ [0.008] MIN. SnPb OR Sn OVER $.001$ [0.03] TO $.003$ [0.08] Cu PLATING TO ACHIEVE A $\varnothing .040 \pm .003$ [1.02 ± 0.07] HOLE.
- "DIM XXX" TO BE DETERMINED BY THE CUSTOMER.
- MECHANICAL CONNECTOR STAY-AWAY ZONE.

mat'l code				tolerances unless otherwise specified				CUSTOMER		FCJ		www.fcjconnect.com	
lfr	ecm no.	dr	date	linear	.XX±.01/0.X±0.3	projection	COPY	title		IP + 24S + 1P			
F				linear	.XXX±.005/0.XX±0.13	projection		title		VERTICAL PRESSFIT RECEPTACLE			
				angles	.XXX±.0020/.XX±.051	projection		product family		PWRBLADE			
				dr	C. BAROT 06-29-99	INCH/MM		product size		dwg no			
				engr	J. BROWN 06-29-99	scale	2:1	code		213			
				chr	J. BROWN 06-29-99	scale	2:1	code		4			
				appd	J. BROWN 06-29-99	scale	2:1	code		4			
sheet index	revision sheet												

Pro/E

cage code 22526