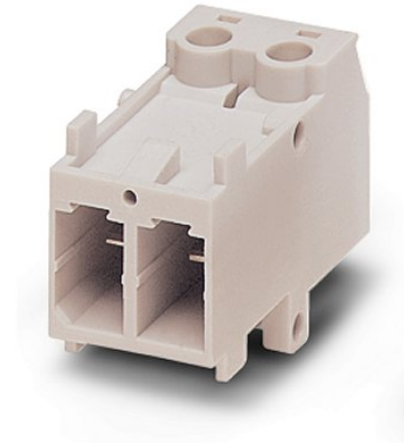



# VC-AMS 2

Order No.: 1853528




<http://eshop.phoenixcontact.de/phoenix/treeViewClick.do?UID=1853528>

Contact insert module, for panel mounting frames, with screw connection, 2-pos., 400 V / 20 A

Commercial data	
GTIN (EAN)	 4 017918 127060
sales group	D231
Pack	50 pcs.
Customs tariff	85369010
Catalog page information	Page 455 (PC-2011)

**Product notes**

WEEE/RoHS-compliant since:  
01/01/2005



<http://www.download.phoenixcontact.com>  
Please note that the data given here has been taken from the online catalog. For comprehensive information and data, please refer to the user documentation. The General Terms and Conditions of Use apply to Internet downloads.

Technical data	
General data	
Note	Plug connectors may only be connected/disconnected when under no load.

Connection method	Screw connection
	Screw connection
Tightening torque	0.5 Nm ... 0.6 Nm
Ambient temperature (operation)	-40 °C ... 100 °C
Pollution degree	3
Surge voltage category	III
Number of positions	2
Insertion/withdrawal cycles	≥ 100
Conductor cross section AWG/kcmil min.	24
Conductor cross section AWG/kcmil max	12
2 conductors with same cross section, solid min.	0.2 mm <sup>2</sup>
2 conductors with same cross section, solid max.	2.5 mm <sup>2</sup>
2 conductors with same cross section, stranded min.	0.2 mm <sup>2</sup>
2 conductors with same cross section, stranded max.	1.5 mm <sup>2</sup>
2 conductors with same cross section, stranded, ferrules without plastic sleeve, min.	0.25 mm <sup>2</sup>
2 conductors with same cross section, stranded, ferrules without plastic sleeve, max.	1.5 mm <sup>2</sup>
2 conductors with same cross section, stranded, TWIN ferrules with plastic sleeve, min.	0.5 mm <sup>2</sup>
2 conductors with same cross section, stranded, TWIN ferrules with plastic sleeve, max.	2.5 mm <sup>2</sup>
Conductor cross-section	0.2 mm <sup>2</sup> ... 4 mm <sup>2</sup>
Connection cross-section AWG	24 ... 12
Stripping length of the individual wire	10 mm

**Material data**

Inflammability class acc. to UL 94	V0
Contact material	CuZn
Contact surface material	Tin-plated
Contact carrier material	PA

**Electrical characteristics**

Rated voltage (III/3)	400 V
Rated surge voltage	6 kV
	6 kV
Rated current	20 A

**Certificates / Approvals**



Certification

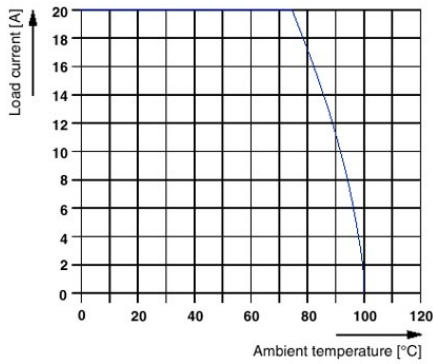
CUL, GOST, LR, UL

**Accessories**

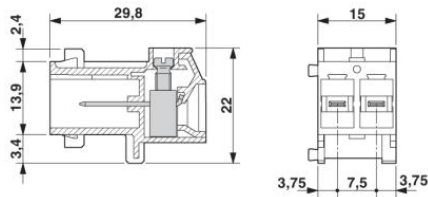
Item	Designation	Description
<b>Plug/Adapter</b>		
1600027	CP-HCC 4	Coding profile, Color: red

**Diagrams/Drawings**

Diagram



Dimensioned drawing



**Address**

PHOENIX CONTACT Inc., USA  
586 Fulling Mill Road  
Middletown, PA 17057, USA  
Phone (800) 888-7388  
Fax (717) 944-1625  
<http://www.phoenixcon.com>



© 2011 Phoenix Contact  
Technical modifications reserved;