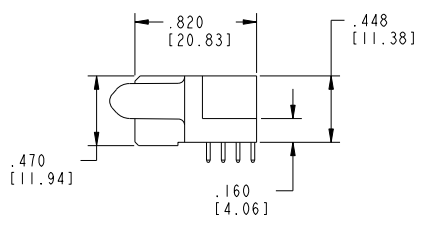
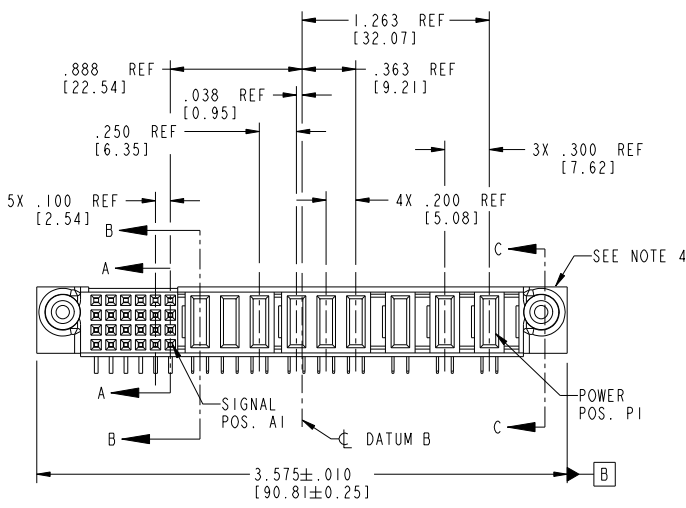
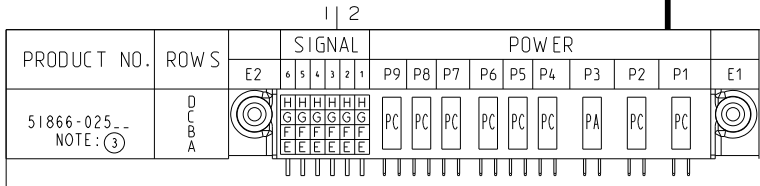


Tous droits strictement réservés. Reproduction ou communication à des tiers interdite sans autorisation écrite du propriétaire. Propriété de c FCI. Droits de reproduction FCI.



All rights strictly reserved. Reproduction or issue to third parties in any form without written authority from the proprietor. Property of FCI. Copyright FCI.



CODE	DIM "M" MATING LENGTH	CONTACT TYPE
E	N/A [N/A]	SIGNAL
F	N/A [N/A]	SIGNAL
G	N/A [N/A]	SIGNAL
H	N/A [N/A]	SIGNAL
PA	.042 [1.07]	POWER
PC	.092 [2.34]	POWER

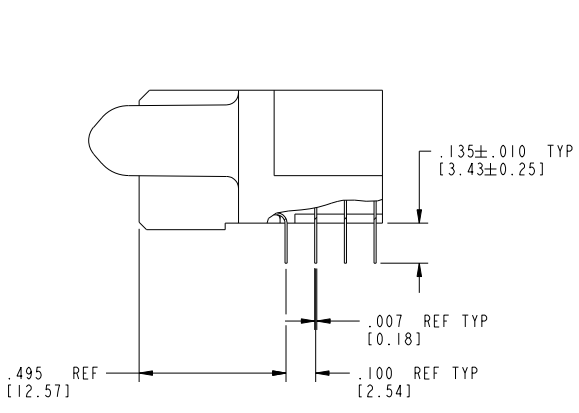
mat'l code				SEE NOTE 2		tolerances unless otherwise specified		CUSTOMER	
lfr	ecr no.	dr	date	linear	.XX±.01/0.XX±0.3	projection	COPY		
A	V04-0145	TAB	02/17/04		.XXX±.005/0.XX±0.13		title 9P + 24S		
B	V04-0242	DAI	03/09/04	angles	.XXX±.0020/0.XX±0.051		R/A SOLDER RECEPTACLE		
C	V04-0271	TAB	03/26/04	dr	0°±?		product family PwrBlade code 213		
D	DG05-0206	SJ	07/05/05	enr	T. BRUNGARD 02/17/04		size dwg no A 51866-025 sheet 1 of 4		
E	DG08-0251	W D	09/16/08	chr	M. GRAY 02/17/04		scale 1:1		
		appd		appd	M. GRAY 02/17/04				
sheet index	revision sheet	E	E	E	E				
		1	2	3	4				

Tous droits strictement reserves. Reproduction ou communication a des tiers interdite sous quelque forme que ce soit sans autorisation écrite du propriétaire. Propriete de c FCI. Droits de reproduction FCI.

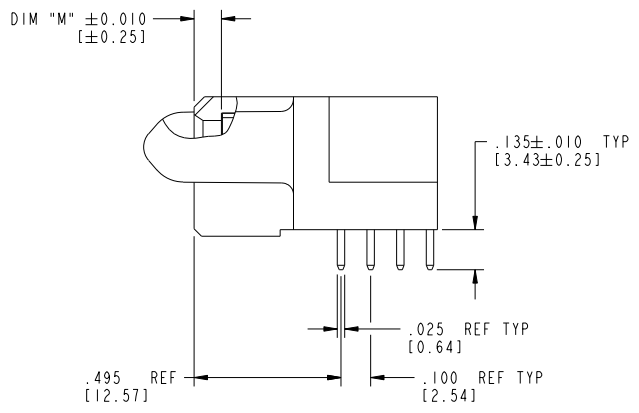


All rights strictly reserved. Reproduction or issue to third parties in any form whatever is not permitted without written authority from the proprietor. Property of FCI. Copyright FCI.

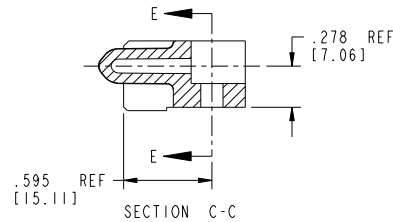
PRODUCT NUMBER
51866-025--
NOTE: ③



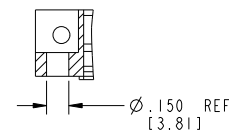
BROKEN-OUT SECTION A-A
SCALE 2:1



BROKEN-OUT SECTION B-B
SCALE 2:1



SECTION C-C



PARTIAL SECTION E-E

mat'l code SEE NOTE 2				tolerances unless otherwise specified		CUSTOMER		FCI www.fciconnect.com	
lfr	ecr no.	dr	date	linear	XX±.01/0.XX±0.3	projection	COPY	title	9P + 24S
E					XXX±.005/0.XX±0.13				R/A SOLDER RECEPTACLE
				angles	XXX±.0020/0.XX±0.051			product family	PwrBlade
				dr	T. BRUNGARD 02/17/04			size	213
				engr	M. GRAY 02/17/04			dwg no	2 of 4
				chr	M. GRAY 02/17/04			scale	1:1
				appd	M. GRAY 02/17/04			code	51866-025
sheet index	revision sheet								

Pro/E

PDM: Rev:E

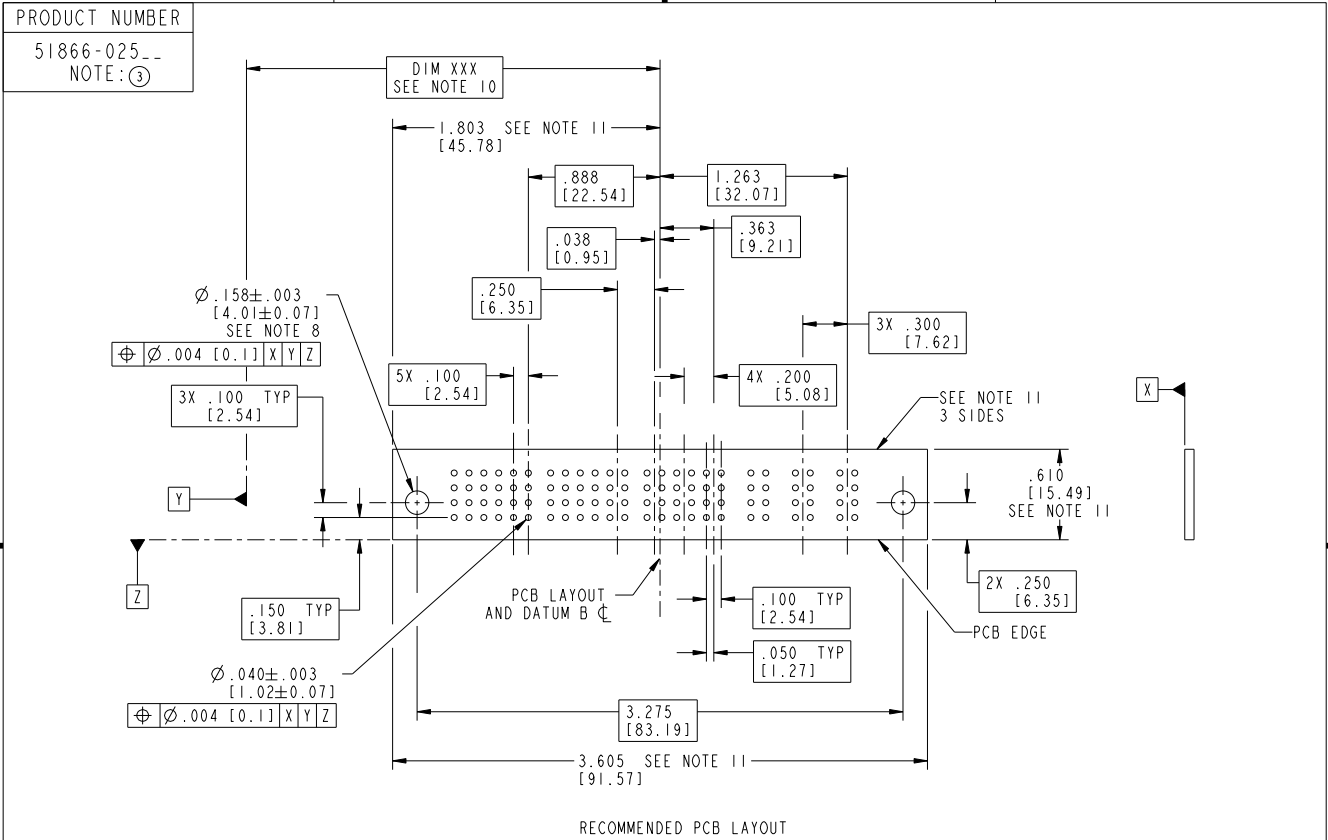
STATUS: Released

Printed: Dec 20, 2010

Tous droits strictement réservés. Reproduction ou communication à des tiers interdite sous quelque forme que ce soit sans autorisation écrite du propriétaire. Propriété de c FCI. Droits de reproduction FCI.



All rights strictly reserved. Reproduction or issue to third parties in any form whatever is not permitted without written authority from the proprietor. Property of FCI. Copyright FCI.



mat'l code				SEE NOTE 2	tolerances unless otherwise specified	CUSTOMER	FCI	www.fciconnect.com
lfr	ecr no.	dr	date	linear	.XX±.01/0.XX±0.3	COPY	title 9P + 24S	
E				linear	.XXX±.005/0.XX±0.13	projection	R/A SOLDER RECEPTACLE	
				linear	.XXX±.0020/0.XX±0.051	projection	product family	PwrBlade
				angles	0° ± 7°	INCH/MM	code	213
				dr	T. BRUNGARD 02/17/04	scale	size	dwg no
				enr	M. GRAY 02/17/04	1:1	A	51866-025
				chr	M. GRAY 02/17/04		sheet	3 of 4
				appd	M. GRAY 02/17/04		code	2526
sheet index	revision sheet							

Pro/E

PDM: Rev: E

STATUS: Released

Printed: Dec 20, 2010

Tous droits strictement réservés. Reproduction ou communication à des tiers interdite sous quelque forme que ce soit sans autorisation écrite du propriétaire. Propriété de c FCI. Droits de reproduction FCI.



All rights strictly reserved. Reproduction or issue to third parties in any form whatever is not permitted without written authority from the proprietor. Property of FCI. Copyright FCI.

PRODUCT NUMBER
51866-025--
NOTE: ③

NOTES:

1. DIMENSIONS AND TOLERANCES ARE IN ACCORDANCE WITH ASME Y14.5M, 1994 UNLESS OTHERWISE SPECIFIED.

CONNECTOR NOTES:

2. HOUSING MATERIAL: UL 94 V-0 GLASS FILLED HIGH-TEMP THERMOPLASTIC
POWER CONTACT MATERIAL: COPPER ALLOY
SIGNAL PIN MATERIAL: COPPER ALLOY

③ 3. SEE ITEM 5 & 6 IN PRINT 10064183 FOR PLATING SPEC OF 51866-025 AND 51866-025LF RESPECTIVELY.

4. MANUFACTURER'S NAME, P/N, AND DATE CODE TO APPEAR ON THIS SURFACE.

5. PRODUCT SPECIFICATION GS-12-149.
APPLICATION SPECIFICATION BUS-20-067.

6. PACKAGED IN TRAYS.

PCB NOTES:

7. ALL HOLE DIAMETERS ARE FINISHED HOLE SIZE.

8. MOUNTING HOLES, WHERE APPLICABLE, ARE UNPLATED.

9. $\varnothing .0453 \pm .0010$ [1.151 \pm 0.025] DRILLED HOLES PLATED WITH
.0003 [0.008] MIN SnPb OVER .001 [0.03]
TO .003 [0.08] Cu PLATING TO ACHIEVE
 $\varnothing .040 \pm .003$ [1.02 \pm .07] HOLE.

10. "DIM XXX" TO BE DETERMINED BY THE CUSTOMER.

11. CONNECTOR KEEP-OUT ZONE.

12. A Δ SYMBOL WILL BE NEXT TO ANY DIMENSION, VIEW, OR NOTE WHICH HAS BEEN MODIFIED WITH THE CURRENT DRAWING REVISION.

mat'l code				SEE NOTE 2	tolerances unless otherwise specified	CUSTOMER	FCI www.fciconnect.com	
ltr	ecn no.	dr	date	lineor	XX±.01/0.XX±0.3	COPY	title	
E					XXX±.005/0.XX±0.13	projection	9P + 24S	
				angles	XXX±.0020/0.XX±0.051		R/A SOLDER RECEPTACLE	
				dr	T. BRUNGARD 02/17/04	INCH/MM	product family	PwrBlade
				engr	M. GRAY 02/17/04	scale	size	dwg no
				chr	M. GRAY 02/17/04	1:1	A	51866-025
				appd	M. GRAY 02/17/04			code
sheet index	revision sheet							213
								sheet
								4 of 4

1 | 2

Pro/E

PDM: Rev:E

STATUS: Released

Printed: Dec 20, 2010

1 | 2

3 |

4

A

A

B

B

page code

2566

4