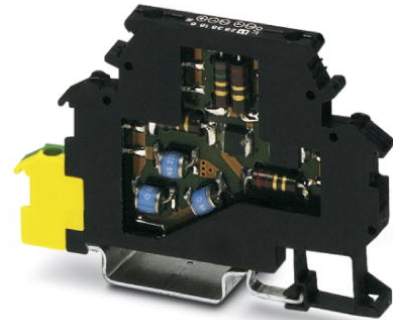


# TT-2-PE- 24DC

Order No.: 2838186

<http://eshop.phoenixcontact.de/phoenix/treeViewClick.do?UID=2838186>

Modular terminal block with three-stage surge protection for a floating double conductor, separate ground connection, nominal voltage: 24 V DC, for mounting on NS 35/7.5, terminal width: 6.2 mm, terminal height: 54,6 mm

## Commercial data

EAN	4017918172855
Pack	10 pcs.
Customs tariff	85363010
Weight/Piece	0.02657 KG
Catalog page information	Page 80 (TT-2007)

## Product notes

WEEE/RoHS-compliant since:  
06/28/2006



<http://www.download.phoenixcontact.com>  
Please note that the data given here has been taken from the online catalog. For comprehensive information and data, please refer to the user documentation. The General Terms and Conditions of Use apply to Internet downloads.

## Technical data

### General

Housing material	PA 6.6
Inflammability class acc. to UL 94	V2
Color	black

Total surge current (8/20) $\mu$ s	10 kA
Total surge current (10/350) $\mu$ s	1 kA
Ambient temperature (operation)	-40 °C ... 85 °C
Mounting type	DIN rail 35 mm
Design	Double-level terminal block with PE foot – separate PE connection
Number of positions	2
Degree of protection	IP20
Direction of action	Line-Line & Line-Earth Ground
Width	6.20 mm
Height	54.60 mm
Length	79.60 mm

**Protective circuit**

IEC category	C1
	C2
	C3
	D1
Nominal voltage $U_N$	24 V DC
	17 V AC
Max. operating voltage $U_{max}$	30 V DC
	21 V AC
Arrester rated voltage $U_C$	30 V DC
	21 V AC
Arrester rated voltage $U_C$ (Core-Core)	30 V DC
	21 V AC
Nominal current $I_N$	300 mA ( $\leq 45^\circ\text{C}$ )
Operating effective current $I_C$ at $U_C$	$\leq 10 \mu\text{A}$
Discharge current to PE at $U_C$	$\leq 1 \mu\text{A}$
Nominal discharge surge current $I_n$ (8/20) $\mu$ s (Core-Core)	5 kA
Nominal discharge surge current $I_n$ (8/20) $\mu$ s (Core-Earth)	5 kA
Total surge current (8/20) $\mu$ s	10 kA
Max. discharge surge current $I_{max}$ (8/20) $\mu$ s maximum (Core-Core)	5 kA
Max. discharge surge current $I_{max}$ (8/20) $\mu$ s maximum (Core-Earth)	5 kA (per path)

Nominal pulse current $I_{an}$ (10/1000) $\mu$ s (Core-Core)	100 A
Nominal pulse current $I_{an}$ (10/1000) $\mu$ s (Core-Earth)	100 A (per path)
Lightning test current (10/350) $\mu$ s, peak value $I_{imp}$	500 A (per path)
Output voltage limitation at 1 kV/ $\mu$ s (Core-Core) spike	$\leq 44$ V
Output voltage limitation at 1 kV/ $\mu$ s (Core-Earth) spike	$\leq 650$ V
Output voltage limitation at 1 kV/ $\mu$ s (Core-Core) static	$\leq 44$ V
Output voltage limitation at 1 kV/ $\mu$ s (Core-Earth) static	$\leq 650$ V
Residual voltage at $I_n$ , (conductor-conductor)	$\leq 50$ V
Protection level $U_p$ (Core-Core)	$\leq 53$ V (C2 (10 kV/5 kA))
Protection level $U_p$ (Core-Earth)	$\leq 650$ V (C2 (10 kV/5 kA))
Response time $t_A$ (Core-Core)	$\leq 1$ ns
Response time $t_A$ (Core-Earth)	$\leq 100$ ns
Input attenuation $a_E$ , sym.	0.8 dB ( $\leq 400$ kHz)
Cut-off frequency $f_g$ (3 dB), sym. in 50 Ohm system	Typ. 3 MHz
Cut-off frequency $f_g$ (3 dB), sym. in 150 Ohm system	Typ. 1 MHz
Capacity (Core-Core)	Typ. 4 nF
Resistance in series	3.7 $\Omega$ 5 % (per path) 3.7 $\Omega$
Surge carrying capacity in acc. with IEC 61643-21 (Core-Core)	C2 (10 kV/5 kA)
Surge carrying capacity in acc. with IEC 61643-21 (Core-Earth)	C2 (10 kV/5 kA) D1 (500 A)

**Connection data**

Type of connection	Screw connection
Connection type IN	Screw terminal blocks
Connection type OUT	Screw terminal blocks
Screw thread	M3
Tightening torque, min	0.8 Nm
Stripping length	8 mm
Conductor cross section stranded min.	0.2 mm <sup>2</sup>

Conductor cross section stranded max.	2.5 mm <sup>2</sup>
Conductor cross section solid min.	0.2 mm <sup>2</sup>
Conductor cross section solid max.	4 mm <sup>2</sup>
Conductor cross section AWG/kcmil min.	24
Conductor cross section AWG/kcmil max	12

**Connection, protective circuit**

Standards/regulations	IEC 61643-21
-----------------------	--------------

**Certificates / Approvals**



Certification	GOST, UL
Certification Ex:	CUL-EX LIS, UL-EX LIS

**Accessories**

Item	Designation	Description
<b>Assembly</b>		
2838995	D-DEK 1,5 BK	Cover for setting the end of a TERMITRAB TT-2-PE... and TT-2/2 row of terminal blocks, color: black

**Marking**

1051993	B-STIFT	Marker pen, for manual labeling of unprinted Zack strips, smear-proof and waterproof, line thickness 0.5 mm
1051016	ZB 6,LGS:FORTL.ZAHLEN	Zack strip, 10-section, printed horizontally: with the numbers, 1-10, 11-20 etc. up to 991-1000, color: white
1051430	ZB 6,LGS:U-N	Zack strip, printed horizontally: 10-section, U, V, W, N, GND, U, V, W, N, GND, color: white
1050499	ZB 6:SO/CMS	Zack strip, 10-section, divisible, special printing, marking according to customer requirements
1051003	ZB 6:UNBEDRUCKT	Zack strip, unprinted, strips with 10 labels for individual labeling with M-PEN or CMS system, for terminal block width: 6.2 mm, color: white
0808749	ZBF 6,LGS:FORTL.ZAHLEN	Zack strip, flat, printed horizontally: 10-section, with the numbers, 1-10, 11-20 etc. up to 991-1000, color: White
0808736	ZBF 6/WH-100:UNBEDRUCKT	Zack strip, flat, unprinted: 10-section, for individual labeling with M-PEN or ZBF-T, large batch, sufficient for labeling 1000 terminal blocks, color: white

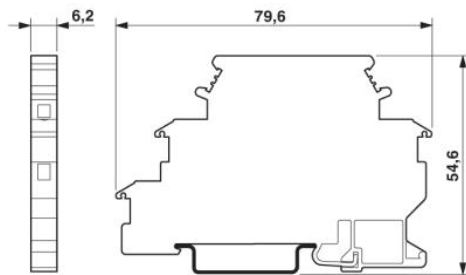
0808710	ZBF 6:UNBEDRUCKT	Zack strip, flat, unprinted: 10-section, for individual labeling with M-PEN or ZBF-T, sufficient for 100 terminal blocks, color: white
---------	------------------	--

**Additional products**

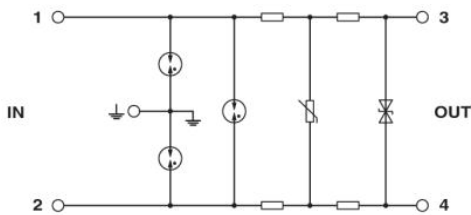
Item	Designation	Description
<b>Assembly</b>		
2838995	D-DEK 1,5 BK	Cover for setting the end of a TERMITRAB TT-2-PE... and TT-2/2 row of terminal blocks, color: black
2839295	SSA 3-6	shield fast connections for conductor diameter 3 - 6 mm. Potential connection cable: 200 mm, black
2839512	SSA 5-10	Shield fast connection for conductor diameters 5 - 10 mm. Potential connection cable: 200 mm, black

**Drawings**

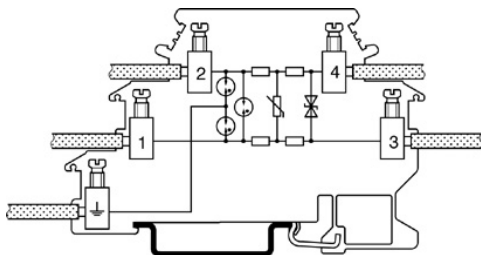
Dimensioned drawing



Circuit diagram



Schematic diagram



**Address**

PHOENIX CONTACT Inc., USA  
586 Fulling Mill Road  
Middletown, PA 17057, USA  
Phone (800) 888-7388  
Fax (717) 944-1625  
<http://www.phoenixcon.com>



© 2009 Phoenix Contact  
Technical modifications reserved;