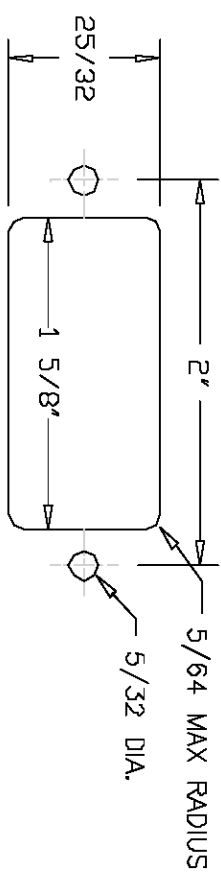


**SPECIFICATIONS**

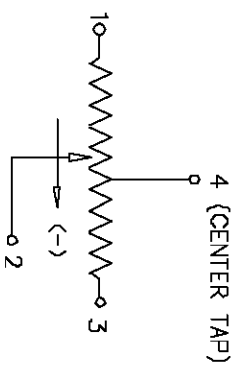
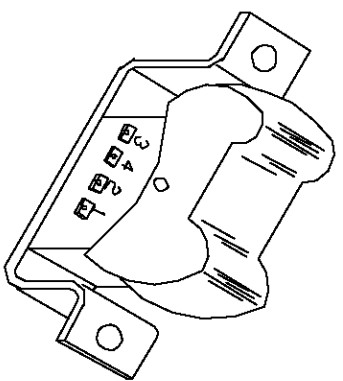
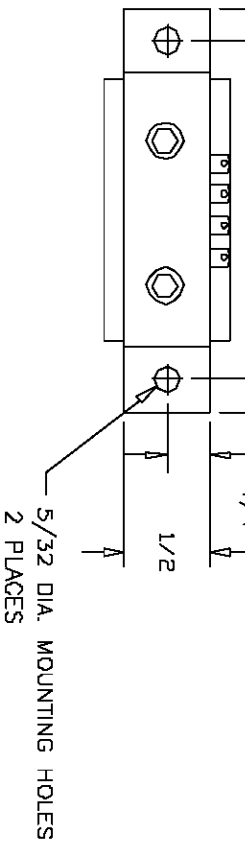
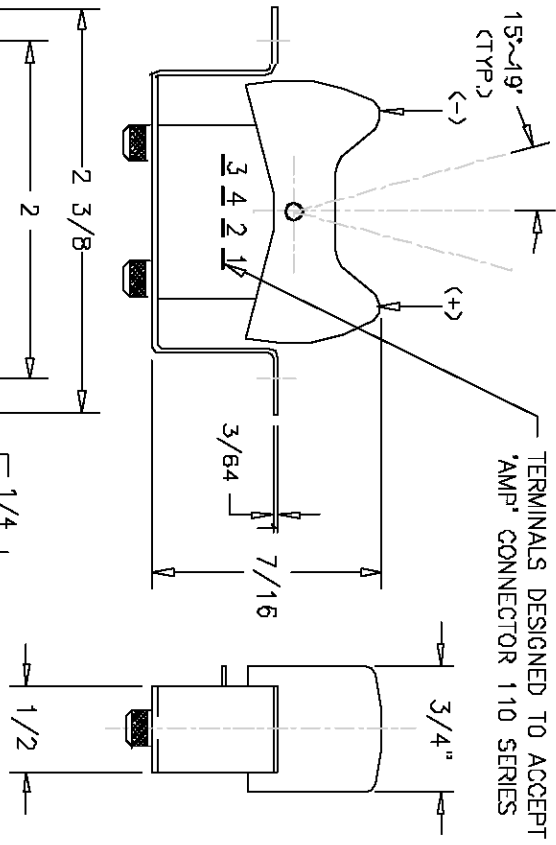
RESISTANCE ----- 10K  
 LINEARITY (INDEPENDENT) ----- ±3%  
 POWER RATING ----- 0.1 WATTS  
 ELECTRICAL ANGLE ----- 30° ±5'  
 MECHANICAL ANGLE ----- 15° ~ ±19'  
 CENTER RETURN ACCURACY ----- 50% ±3%  
 RESOLUTION ----- ESSENTIALLY INFINITE  
 MAX. WIPER OUTPUT ----- 1 MA RECOMMENDED, 5MA MAX.  
 OUTPUT SMOOTHNESS ----- BELOW 0.2% AGAINST INPUT VOLTAGE  
 CONTACT RESISTANCE VARIATION ----- BELOW 5% C.R.V.  
 INSULATION RESISTANCE ----- 1000MEG OHMS @ 500VDC MIN.  
 DIELECTRIC STRENGTH ----- 1 MINUTE AT 500 VAC  
 STARTING TORQUE ----- .15 OZ. IN. ~ .18 OZ. IN.  
 WIPER CURRENT ----- BELOW 10 U.A.  
 WEIGHT ----- APPROX. 0.7 OZ.  
 OPERATING TEMPERATURE ----- 20°C TO +65°C  
 STOPPER STRENGTH ----- OVER 0.03 OZ. IN.  
 VIBRATION ----- 10 - 55 Hz, 10G.  
 SHOCK ----- 30G.  
 LIFE EXPECTANCY ----- APPROX. 2,000,000 OPERATIONS.

**MATERIALS**  
 HOUSING ----- HIGH TEMP. THERMO PLASTIC  
 TERMINALS ----- GOLD PLATED BRASS  
 RESISTANCE ELEMENT ----- CONDUCTIVE PLASTIC

**SUGGESTED PANEL LAYOUT**



REV.	BY	DATE	P/N
			J3R-1-10K



**SCHEMATIC**



**ETI SYSTEMS**  
 CARLSBAD CALIFORNIA

2251 LAS PALMAS DR.  
 CARLSBAD, CA 92009  
 PHONE (760) 929-0749  
 FAX (760) 929-0748  
 WWW.ETISYSTEMS.COM

**TITLE**

ROCKER POT

**PART NO.**

J3R-1-10K