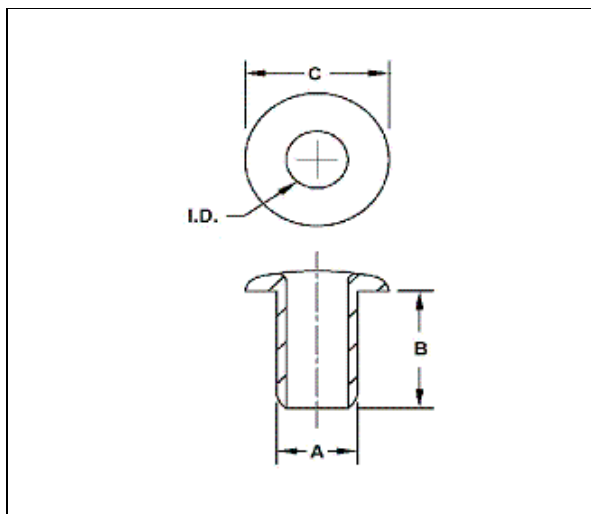


## Wide Roll Eyelets

For popular PC board and electronic assembly applications



CAT NO.	"A" BARREL O.D.	BARREL I.D.	"B" LENGTH UNDER FLANGE	"C" FLANGE DIAMETER	HOLE SIZE of MATERIAL TO BE EYELETED
22	.059 [1.49]	.045 [1.14]	.062 [1.57]	.105 [2.7]	.062 [1.57] USE DRILL #51
23			.093 [2.36]		
24			.125 [3.18]		
25			.156 [3.96]		
26			.187 [4.75]		
27			.219 [5.56]		
33	.089 [2.26]	.070 [1.78]	.093 [2.36]	.150 [3.8]	.093 [2.36] USE DRILL #42
34			.125 [3.18]		
35			.156 [3.96]		
36			.187 [4.75]		
37			.219 [5.56]		
43	.121 [3.07]	.102 [2.59]	.093 [2.36]	.200 [5.1]	.125 [3.18] USE DRILL #30
44			.125 [3.18]		
45			.156 [3.96]		
46			.187 [4.75]		
47			.219 [5.56]		
48			.250 [6.35]		

Eyelet Staking Tool:

Cat. No.	Description	Eyelet Part Numbers
<a href="#">3075</a>	For 1/16" Eyelets	# 22 - 27
<a href="#">3076</a>	For 3/32" Eyelets	# 33 - 37
<a href="#">3077</a>	For 1/8" Eyelets	# 43 - 48