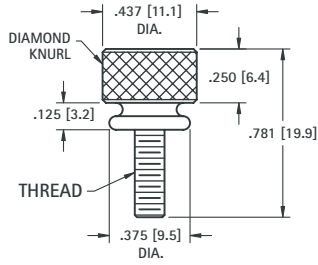


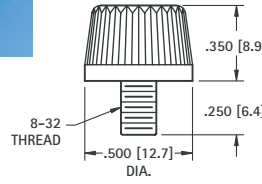
THUMB SCREWS

For quick removal of panel from chassis. Other variations available



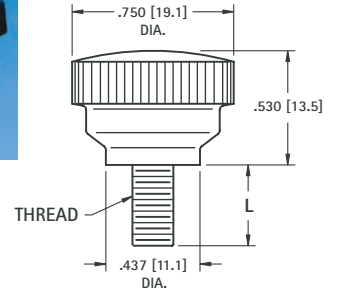
CAT. NO.	THREAD
1708	6-32
1709	8-32
1710	10-32

MATERIAL: Brass, Nickel Plate



CAT. NO. 1711

MATERIAL:
Knob: Phenolic
Stud: Steel, Zinc Plate



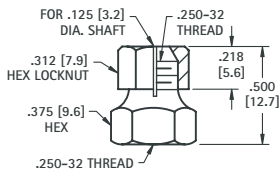
CAT. NO.	L	THREAD
1712	.375 (9.5)	10-24
1720	.500 (12.7)	.250-20

MATERIAL:
Knob: Phenolic
Stud: Steel, Zinc Plate

SHAFT LOCKS

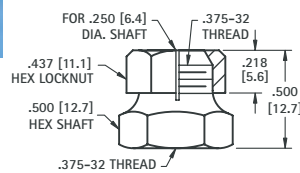
MATERIAL: Brass, Nickel Plate

For .125 (3.2) SHAFT



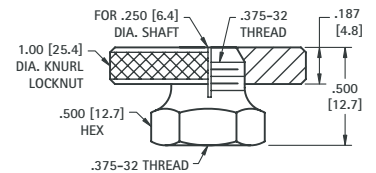
CAT. NO. 1700

For .250 (6.4) SHAFT



CAT. NO. 1701

For .250 (6.4) SHAFT



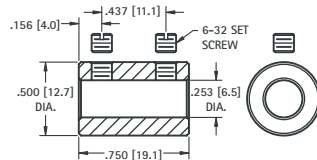
CAT. NO. 1702

.250 (6.4) SHAFT COUPLING



• Two set screws hold shaft securely

MATERIAL: Brass, Nickel Plate
Supplied unassembled

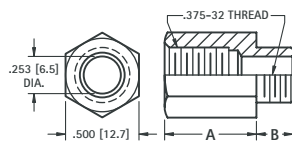


CAT. NO. 1453

VOLUME CONTROL EXTENDERS



For .250 (6.4) volume control shafts having .375-32 threaded bushings.

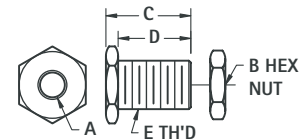


CAT. NO.	A	B
1464	.625 (15.9)	.250 (6.4)
1465	.625 (15.9)	.375 (9.5)
1466	.687 (17.4)	.500 (12.7)
1467	.750 (19.1)	.250 (6.4)

MATERIAL: Brass, Nickel Plate

PANEL BEARINGS

STANDARD and MINIATURE



MATERIAL: Brass, Nickel Plate
Supplied unassembled

CAT. NO.	A	B (HEX)	C	D	E THREAD
1705	.253 (6.5)	.437 (11.1)	.500 (12.7)	.437 (11.1)	.375-32 Standard
1706	.128 (3.3)	.343 (8.7)	.437 (11.1)	.375 (9.5)	.250-32 Miniature

PRECISION PANEL NUTS



For Volume Controls, Switches, Capacitors, Tip Jacks, etc.

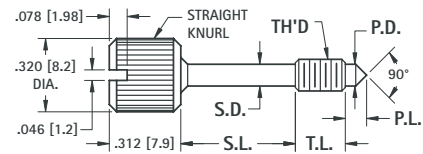
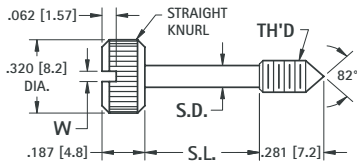
CAT. NO.	FOR	THREAD	DIAMETER	THICKNESS
1448	Mounting	.250-32	.375 Hex	.093 (2.38)
1449	Mini. Control	.250-32	.312 Hex	.078 (1.98)
1456	Vol. Control	.375-32	.500 Hex	.093 (2.38)
1458	Switch	.468-32	.562 Hex	.078 (1.98)
1459	Switch Ring	.468-32	.625 Knurled	.062 (1.57)
1472	Filter	.312-32	.375 Hex	.093 (2.38)

MATERIAL: Brass, Nickel Plate

STAINLESS STEEL PANEL HARDWARE

MATERIAL: Stainless Steel per ASTM-A581/A582

CAPTIVE PANEL SCREWS

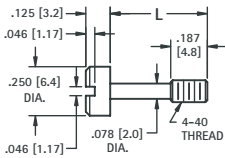


CAT. NO.	THREAD	S.D. ± .005 (.13)	S.L. ± .010 (.25)	W + .015 (+.38)-.000
8700	4-40	.078 (2.0)	.375 (9.5)	.036 (.091)
8701	4-40	.078 (2.0)	.500 (12.7)	.036 (.091)
8702	4-40	.078 (2.0)	.625 (15.9)	.036 (.091)
8703	6-32	.095 (2.41)	.375 (9.5)	.045 (1.14)
8704	6-32	.095 (2.41)	.500 (12.7)	.045 (1.14)
8705	6-32	.095 (2.41)	.625 (15.9)	.045 (1.14)

CAT. NO.	THREAD	T.L. ± .015 (.38)	S.D. ± .005 (.13)	S.L. ± .010	P.D. +0.00-.016 (-.40)	P.L. ± .015 (.38)
8706	4-40	.125 (3.2)	.078 (2.0)	.171 (4.3)	.078 (2.0)	.078 (2.0)
8707	4-40	.125 (3.2)	.078 (2.0)	.296 (7.5)	.078 (2.0)	.078 (2.0)
8708	4-40	.125 (3.2)	.078 (2.0)	.421 (10.7)	.078 (2.0)	.078 (2.0)
8709	6-32	.218 (5.5)	.095 (2.41)	.187 (4.7)	.095 (2.41)	.093 (2.36)
8710	6-32	.218 (5.5)	.095 (2.41)	.312 (7.9)	.095 (2.41)	.093 (2.36)
8711	6-32	.218 (5.5)	.095 (2.41)	.437 (11.1)	.095 (2.41)	.093 (2.36)



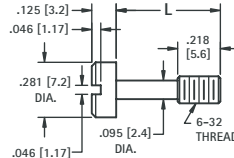
4-40



CAT. NO.	LENGTH
2413	.469 (11.9)
2414	.531 (13.4)



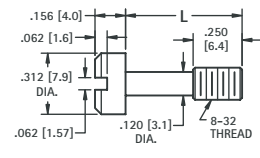
6-32



CAT. NO.	LENGTH
2415	.531 (13.5)
2416	.593 (15.1)
2417	.656 (16.7)



8-32

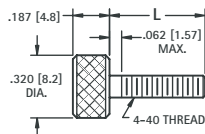


CAT. NO.	LENGTH
2418	.656 (16.7)
2419	.718 (18.2)
2420	.781 (19.8)

THUMB SCREWS



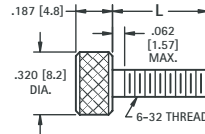
4-40



CAT. NO.	LENGTH
2400	.312 (7.9)
2401	.375 (9.5)
2402	.437 (11.1)
2403	.500 (12.7)



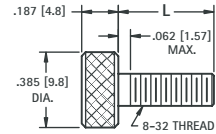
6-32



CAT. NO.	LENGTH
2404	.312 (7.9)
2405	.375 (9.5)
2406	.437 (11.1)
2407	.500 (12.7)



8-32

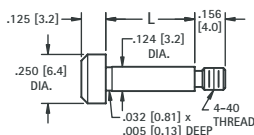


CAT. NO.	LENGTH
2408	.375 (9.5)
2409	.437 (11.1)
2410	.500 (12.7)
2411	.562 (14.3)
2412	.625 (15.9)

SHOULDER SCREWS



4-40



SLOTTED

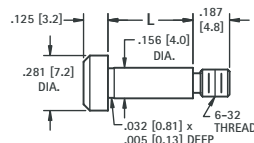


SOCKET

CAT. NO.	LENGTH	CAT. NO.
2421	.125 (3.2)	2441
2422	.250 (6.4)	2442
2423	.375 (9.5)	2443
2424	.500 (12.7)	2444



6-32



SLOTTED

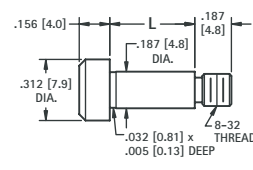


SOCKET

CAT. NO.	LENGTH	CAT. NO.
2425	.125 (3.2)	2445
2426	.250 (6.4)	2446
2427	.375 (9.5)	2447
2428	.500 (12.7)	2448
2429	.625 (15.9)	2449
2430	.750 (19.1)	2450



8-32



SLOTTED



SOCKET

CAT. NO.	LENGTH	CAT. NO.
2431	.125 (3.2)	2451
2432	.250 (6.4)	2452
2433	.375 (9.5)	2453
2434	.500 (12.7)	2454
2435	.625 (15.9)	2455
2436	.750 (19.1)	2456
2437	1.000 (25.4)	2457

Tel (718) 956-8900 • Fax (718) 956-9040

(800) 221-5510 • kec@keyco.com

KEYSTONE
RoHS COMPLIANT ~ ISO 9001 CERTIFIED

www.keyco.com

31-07 20th Road - Astoria, NY 11105-2017