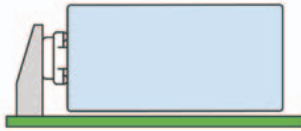


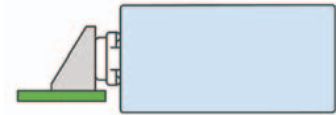
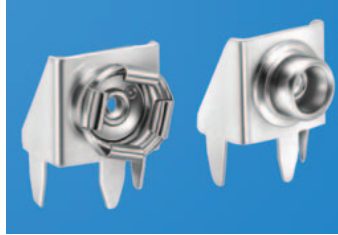
HORIZONTAL 9 VOLT PC SNAP-ON CONTACTS

Mounts Directly to Printed Circuit Board

- Space saving design installs directly onto the PC board
- Suitable for .062 (1.57) to .093 (2.36) thick PC boards
- Ideal for self-contained battery compartments



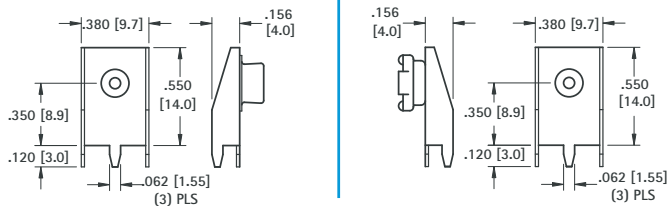
To Mount Battery "On" PC Board
Use Cat. No. 593 and Cat. No. 594



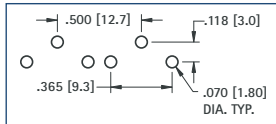
To Mount Battery "Off" PC Board
Use Cat. No. 635 and Cat. No. 636

MATERIAL: Frame: .015 (.38) thick Steel, Tin Plate; **Contacts:** Steel, Nickel Plate

"On-Board"



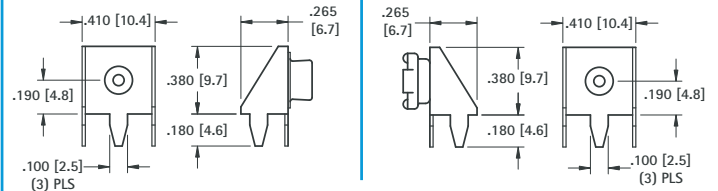
Mounting Detail for Two Contacts



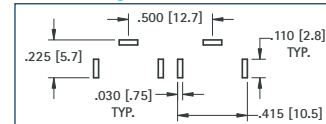
CAT. NO. 593 (Male)

CAT. NO. 594 (Female)

"Off-Board"



Mounting Detail for Two Contacts



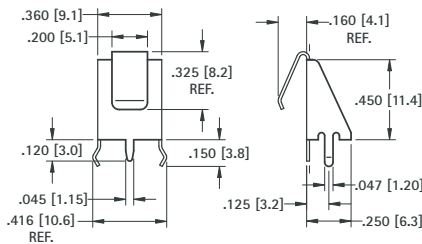
CAT. NO. 635 (Male)

CAT. NO. 636 (Female)

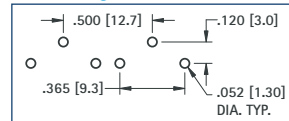
HORIZONTAL 9 VOLT PC LEAF-SPRING CONTACT

- Ideal "Slide-In" contact for easy installation and removal of 9 Volt batteries
- Space saving design installs directly onto the PC board
- Suitable for .062 (1.57) to .093 (2.36) thick PC boards
- Reliable leaf-spring assures low contact resistance
- Ideal for self-contained battery compartments
- Snap-in mounting legs holds contact secure during wave soldering

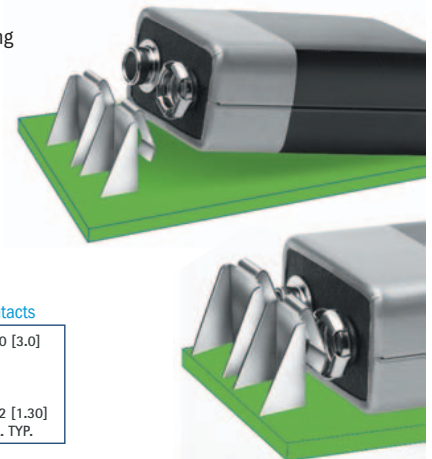
MATERIAL: .012 (.30) thick Spring Steel, Tin Nickel Plate



Mounting Detail for Two Contacts



CAT. NO. 590

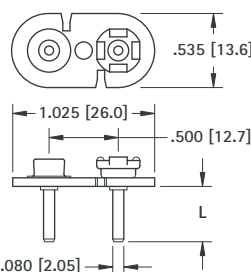


VERTICAL 9 VOLT PC SNAP-ON CONTACT

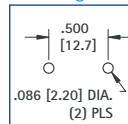
- Space saving, economical
- Excellent mechanical strength
- Low contact resistance
- Durable fibre base
- Wave solderable
- Anti-Wicking Design

SPECIFICATIONS

Base: .062 (1.57) thick Fibre
Contacts: Steel, Nickel Plate
Pins: Brass, Tin Plate



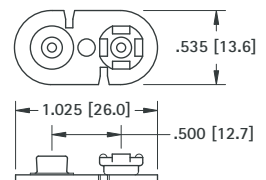
Mounting Detail



CAT. NO.	LENGTH
967 (with PC Pins)	.120 (3.0)
968 (with PC Pins)	.400 (10.2)

9 VOLT SNAP-ON CONTACT

- Cost saving design
- Ideal for custom applications
- Attach your own terminals and wire leads



SPECIFICATIONS

Base: .062 (1.57) thick Fibre
Contacts: Steel, Nickel Plate

CAT. NO. 68 (without PC Pins)