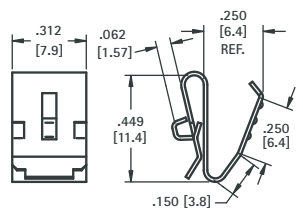


Refer to page 26  
for Battery Contact Layout & Mounting Details

- Economical and reliable contacts are ideal for molded cases with self contained battery compartments
- Single & dual contact designs available for "A" · "AA" · "AAA" · "AAAA" · "N" · "12V" size batteries
- Solder "ear" to facilitate soldering of wire lead
- Unique spring tension contact adjusts to variations in battery length
- Reliable spring tension contacts assure low contact resistance
- Clips easily onto .060 (1.52) to .070 (1.78) thick panel edge
- Sharp barbs securely anchor contact in place

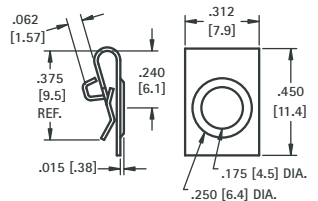
**For "A" · "AA"**



**CAT. NO. 209**

**MATERIAL:** .012 (.30) thick Spring Steel, Nickel Plate

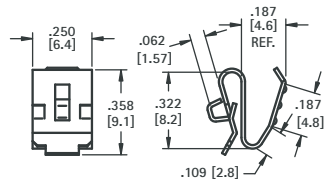
**For "A" · "AA"**



**CAT. NO. 228**

**MATERIAL:** .010 (.25) thick Spring Steel, Nickel Plate

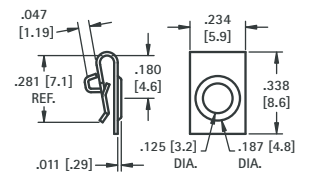
**For "AAA" · "AAAA" · "12V" · "N"**



**CAT. NO. 204**

**MATERIAL:** .010 (.25) thick Spring Steel, Nickel Plate

**For "AAA" · "AAAA" · "12V" · "N"**

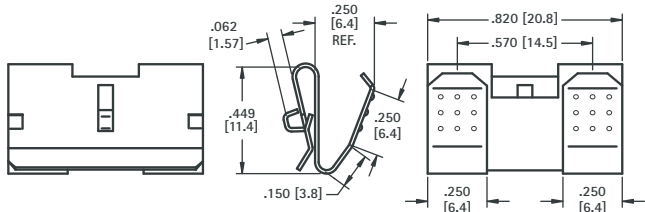


**CAT. NO. 238**

**MATERIAL:** .010 (.25) thick Spring Steel, Nickel Plate

**For "A" · "AA"**

- The (2) two leaf contacts are held together by a web. This design offers greater stability.

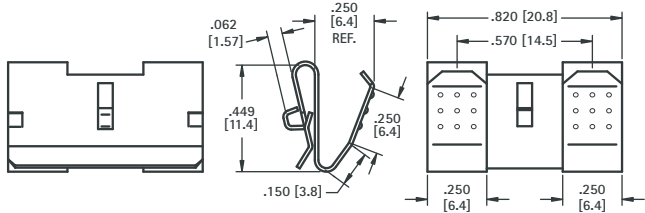


**CAT. NO. 210**

**MATERIAL:** .012 (.30) thick Spring Steel, Nickel Plate

**For "A" · "AA"**

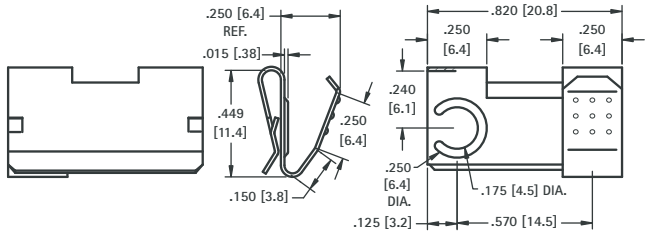
- The (2) two leaf contacts are separate, allowing a divider between the batteries.



**CAT. NO. 288**

**MATERIAL:** .012 (.30) thick Spring Steel, Nickel Plate

**For "A" · "AA"**

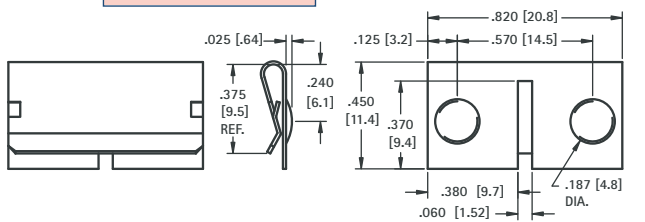
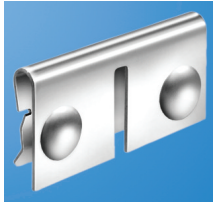


**CAT. NO. 290** Left (shown)

**CAT. NO. 291** Right

**MATERIAL:** .012 (.30) thick Spring Steel, Nickel Plate

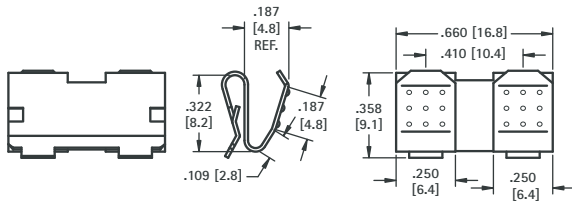
**For "A" · "AA"**



**CAT. NO. 292**

**MATERIAL:** .010 (.25) thick Spring Steel, Nickel Plate

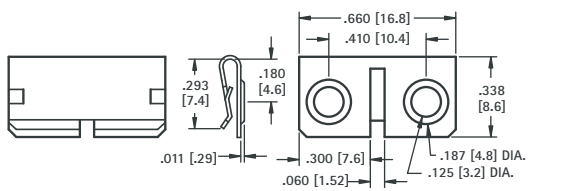
**For "AAA" · "AAAA" · "12V" · "N"**



**CAT. NO. 202**

**MATERIAL:** .010 (.25) thick Spring Steel, Nickel Plate

**For "AAA" · "AAAA" · "12V" · "N"**



**CAT. NO. 294**

**MATERIAL:** .010 (.25) thick Spring Steel, Nickel Plate