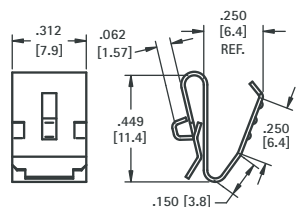


Refer to page 26
for Battery Contact Layout & Mounting Details

- Economical and reliable contacts are ideal for molded cases with self contained battery compartments
- Single & dual contact designs available for "A" · "AA" · "AAA" · "AAAA" · "N" · "12V" size batteries
- Solder "ear" to facilitate soldering of wire lead
- Unique spring tension contact adjusts to variations in battery length
- Reliable spring tension contacts assure low contact resistance
- Clips easily onto .060 (1.52) to .070 (1.78) thick panel edge
- Sharp barbs securely anchor contact in place

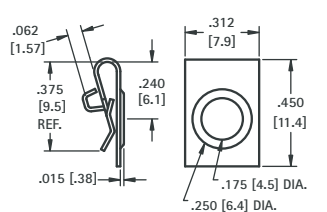
For "A" · "AA"



CAT. NO. 209

MATERIAL: .012 (.30) thick Spring Steel, Nickel Plate

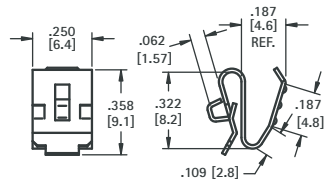
For "A" · "AA"



CAT. NO. 228

MATERIAL: .010 (.25) thick Spring Steel, Nickel Plate

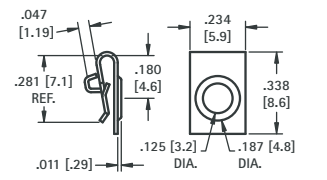
For "AAA" · "AAAA" · "12V" · "N"



CAT. NO. 204

MATERIAL: .010 (.25) thick Spring Steel, Nickel Plate

For "AAA" · "AAAA" · "12V" · "N"

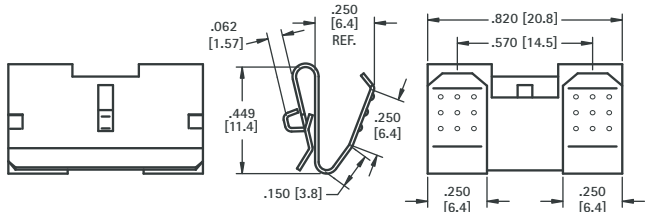


CAT. NO. 238

MATERIAL: .010 (.25) thick Spring Steel, Nickel Plate

For "A" · "AA"

- The (2) two leaf contacts are held together by a web. This design offers greater stability.

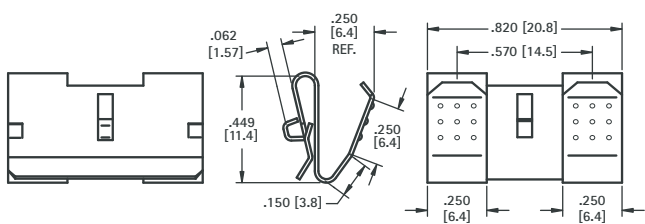


CAT. NO. 210

MATERIAL: .012 (.30) thick Spring Steel, Nickel Plate

For "A" · "AA"

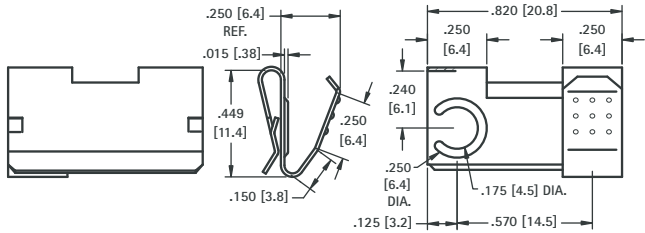
- The (2) two leaf contacts are separate, allowing a divider between the batteries.



CAT. NO. 288

MATERIAL: .012 (.30) thick Spring Steel, Nickel Plate

For "A" · "AA"

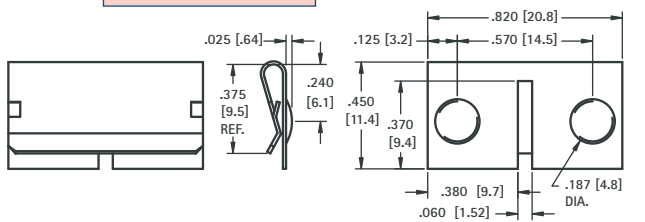
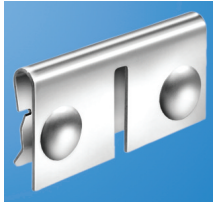


CAT. NO. 290 Left (shown)

CAT. NO. 291 Right

MATERIAL: .012 (.30) thick Spring Steel, Nickel Plate

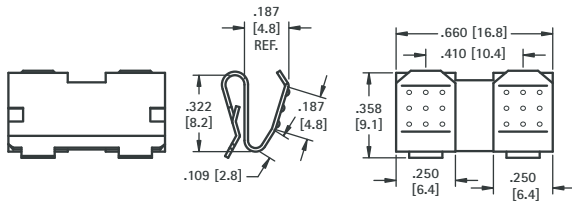
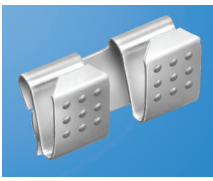
For "A" · "AA"



CAT. NO. 292

MATERIAL: .010 (.25) thick Spring Steel, Nickel Plate

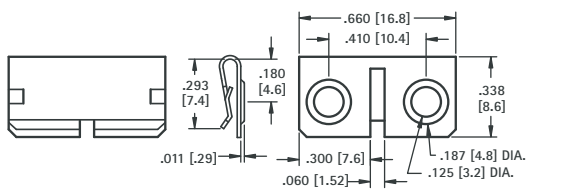
For "AAA" · "AAAA" · "12V" · "N"



CAT. NO. 202

MATERIAL: .010 (.25) thick Spring Steel, Nickel Plate

For "AAA" · "AAAA" · "12V" · "N"



CAT. NO. 294

MATERIAL: .010 (.25) thick Spring Steel, Nickel Plate