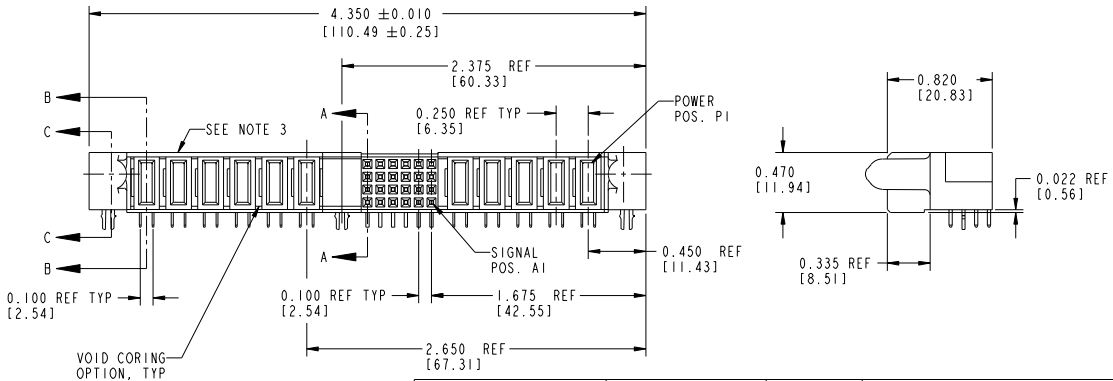
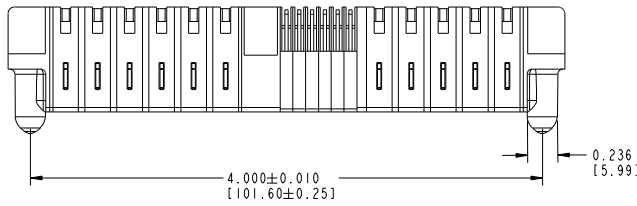


Tous droits strictement réservés. Reproduction ou communication o des tiers interdite sans autorisation écrite du propriétaire. Property of FCI. Droits de reproduction FCI.



All rights strictly reserved. Reproduction or issue to third parties in any form or by any means without written authority from the proprietor. Property of FCI. Copyright FCI.

PRODUCT NUMBER  
SEE SHEET 3



mat'l code		NOTE 1		tolerances unless otherwise specified		CUSTOMER		FCI	
ltr	ecn no.	dr	date	linear	.XX±, 0.1/, X±, 3	COPY	www.fciconnect.com	title	5P + 24S + 1M + 6P
N	DG05-0242	SJ	07/25/05		.XXX±, 0.05/, X±, 13	projection		R/A SOLDER RECEPT.	
P	DG05-0313	SJ	09/05/05		.XXXX±, 0.020/, XXX±, 0.051				
R	DG05-0338	SW	09/19/05	angles	0° ± 2°				
S	DG05-0550	GvJM	12/16/05	dr	D. WOLFORD 01/21/99	INCH/MM	product family	PwrBlode	code
T	DG08-0239	JC	09/12/08	engr	J. BROWN 01/21/99	scale	size	dwg no	213
				chr	J. BROWN 01/21/99	1:1	A	51625	sheet
				appd	J. BROWN 01/21/99				1 of 4

sheet index	revision sheet	T	T	T	T				
		1	2	3	4				

Pro/E

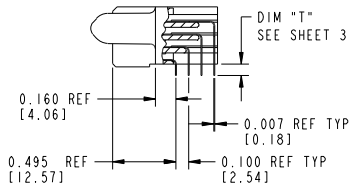
code code 22526

Tous droits strictement réservés. Reproduction ou communication à des tiers interdite sans autorisation écrite du propriétaire. Property of FCJ. Droit de reproduction FCJ.

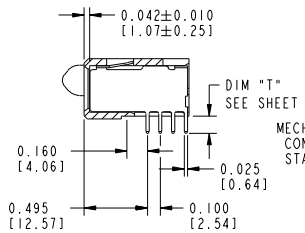


All rights strictly reserved. Reproduction or issue to third parties in any form without written authority from the proprietor. Property of FCJ. Copyright FCJ.

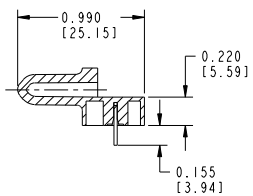
PRODUCT NUMBER  
SEE SHEET 3



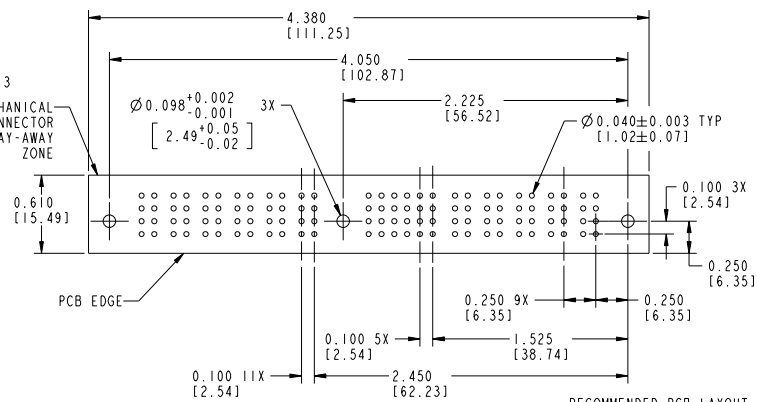
SECTION A-A



SECTION B-B



SECTION C-C



RECOMMENDED PCB LAYOUT

mat'l code		NOTE 1		tolerances unless otherwise specified		CUSTOMER		FCJ		
lfr	ecm no.	dr	date	linear	.XX±.01/.XX±.3	projection	COPY	www.fcjconnect.com		
T				angles	.XXX±.005/.XX±.13			title 5P + 24S + 1M + 6P		
				dr	.XXX±.0020/.XX±.051			R/A SOLDER RECEPT.		
				engr	0° ± 2°			product family PwrBlode		
				chr	D. WOLFORD 01/21/99			size dwg no		
				appd	J. BROWN 01/21/99			code 213		
					J. BROWN 01/21/99			sheet 2		
					J. BROWN 01/21/99					
sheet index	revision sheet									

Pro/E 3 code code 22526 4



Tous droits strictement réservés. Reproduction ou communication o des tiers interdite sans la permission écrite du propriétaire. Property of FCJ. Droit de reproduction FCJ.



All rights strictly reserved. Reproduction or issue to third parties in any form or by any means without written authority from the proprietor. Property of FCJ. Copyright FCJ.

PRODUCT NUMBER  
SEE SHEET 3

CONNECTOR NOTES:

- HOUSING MATERIAL: UL 94 V-0 GLASS FILLED HIGH TEMP THERMOPLASTIC  
POWER CONTACT MATERIAL: COPPER ALLOY  
SIGNAL CONTACT MATERIAL: COPPER ALLOY

- PLATING: (51625-XX00X STAND OFF 51625-XX001 AND 51625-XX002)  
SEE ITEM 5 & 6 IN PRINT 10064183 FOR PLATING SPEC OF 51625-XX00X AND 51625-XX00XLF RESPECTIVELY

- MANUFACTURER'S NAME, P/N, AND DATE CODE TO APPEAR ON THIS SURFACE
- PRODUCT SPECIFICATION GS-12-149

PCB NOTES:

- ALL DIMENSIONS ARE BASIC UNLESS OTHERWISE SPECIFIED.
- ALL THROUGH HOLES ARE LOCATED WITH A TRUE POSITION OF 0.004 [0.10]
- ALL HOLE DIAMETERS ARE FINISHED HOLE SIZE
- Ø 0.098 [2.49] THROUGH HOLES ARE UNPLATED
- Ø 0.0453 ± 0.0010 [1.15] ± 0.025] DRILLED HOLES PLATED WITH 0.0003 [0.008] MIN SnPb OVER 0.001 [0.03] TO 0.003 [0.08] Cu PLATING TO ACHIEVE A Ø 0.040 ± 0.003 [1.02 ± 0.07] HOLE.

- A Δ SYMBOL WILL BE NEXT TO ANY DIMENSION, VIEW, OR NOTE WHICH HAS BEEN MODIFIED WITH THE CURRENT DRAWING REVISION.

CONFIDENTIAL

mat'l code		NOTE 1		tolerances unless otherwise specified		CUSTOMER		FCJ	
lfr	ecm no.	dr	date	linear	angles	projection	title	product size	code
T				.XX±.01/.XX±.13		projection	5P + 24S + 1M + 6P R/A SOLDER RECEPT.	dwg no	213
				.XXX±.0020/.XXX±.051	0° ± 2°	INCH/MM	PRODUCT.FAMILY:3	scale	4
				dr D. WOLFORD 01/21/99		scale 1:1	51625		
				engr J. BROWN 01/21/99					
				chr J. BROWN 01/21/99					
				appd J. BROWN 01/21/99					
sheet index	revision sheet								

Pro/E

code code 22526

PDM: Rev:T

STATUS:Released

Printed: Dec 20, 2010