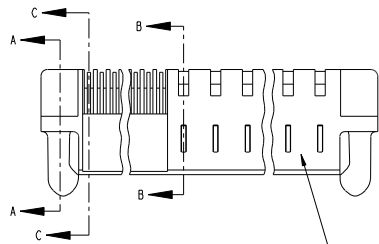


Tous droits strictement réservés. Reproduction ou communication à des tiers sans autorisation écrite du propriétaire. Property of FCJ. Droits de reproduction FCJ.

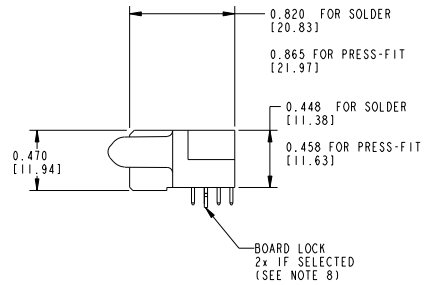
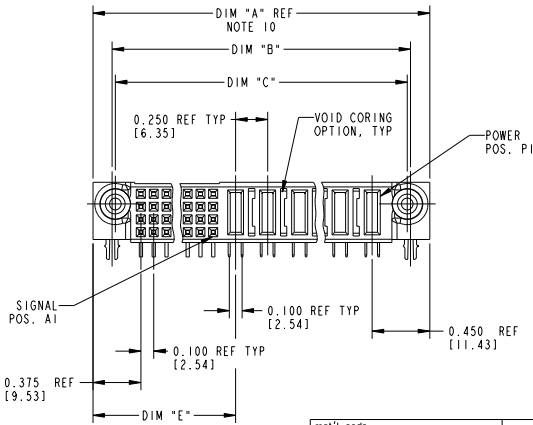


All rights strictly reserved. Reproduction or issue to third parties in any form or by any means without written authority from the proprietor. Property of FCJ. Copyright FCJ.

PRODUCT NUMBER
51762- ABBCC00EF--
Note: ③
SEE NOTE 1



SEE NOTE 9



THIS FILE WAS ORIGINALLY CREATED IN THE PRO ENGINEER ENVIRONMENT AND ANY FUTURE REVISIONS TO THIS FILE MUST BE MADE IN THE PRO ENGINEER ENVIRONMENT

mat'l code				tolerances unless otherwise specified		CUSTOMER	
SEE NOTE 2						COPY	
lir	con no.	dr	date	linear	.XX±, 0.1 / XX±, 3	projection	
J	D605-0124	SJ	06/03/05		.XXX±, 005 / XX±, 13	A	
K	0008-0239	K	09/11/08	angles	.XXX±, 0020 / XXX±, 051	INCH / MM	
				d	0±, 2°	scale	
				eng	05-18-99	1:1	
				chr	J. BROWN 05-18-99	A	
				appd	J. BROWN 05-18-99	A	
sheet	revision	K	K	K		product family	
index	sheet	1	2	3		PWRBLADE	
						code	
						213	
						SHEET	
						1 OF 3	

form no. 7530-001-103

1 | 2

3 |

cage code 22526

4

PDM: Rev:K

STATUS:Released

Printed: Dec 20, 2010

Tous droits strictement réservés. Reproduction ou communication à des tiers sans autorisation écrite du propriétaire. Property of FCJ. Droit de reproduction FCJ.



All rights strictly reserved. Reproduction or issue to third parties in any form or by any means without written authority from the proprietor. Property of FCJ. Copyright FCJ.

PRODUCT NUMBER	DIM	LENGTH FORMULAS (SEE NOTE 10)
51762-ABBCCCODEF-- Note: ③	DIM "A"	.100 [2.54] x (CCC/4) + .250 [6.35] x BB + .650 [16.51] (NOTE 10)
SEE NOTE 1	DIM "B"	.100 [2.54] x (CCC/4) + .250 [6.35] x BB + .350 [8.89]
	DIM "C"	.100 [2.54] x (CCC/4) + .250 [6.35] x BB + .300 [7.62]
	DIM "E"	.100 [2.54] x (CCC/4) + .450 [11.43]
	DIM "F"	.100 [2.54] x (CCC/4) + .250 [6.35] x BB + .680 [17.27]
	DIM "H"	.100 [2.54] x (CCC/4) + .250 [6.35]

CONNECTOR NOTES

- PRODUCT NUMBER CODE:
51762 - A BB CCC 00 E F LF
 - NO THIS SUFFIX: 100u"/2.54um SnPb ON PCB INTERFACE
 - ADD THIS SUFFIX: 78u"/2.00um Sn ON PCB INTERFACE
 - RETENTION TO PCB (NOTE 8)
 - TAIL OPTIONS (NOTE 7)
 - ALWAYS "00" (ZERO ZERO) (NOTE 6)
 - NUMBER OF SIGNAL CONTACTS (NOTE 5)
 - NUMBER OF RIGHT POWER CONTACTS (NOTE 4)
 - PLATING (NOTE 31)
 - BASE NUMBER
- HOUSING MATERIAL: GLASS FILLED V-0 HIGH TEMP THERMO PLASTIC.
SIGNAL CONTACT MATERIAL: COPPER ALLOY
POWER CONTACT MATERIAL: COPPER ALLOY
- PLATING OPTION:
I = SEE PRINT 10064183 FOR PLATING SPEC OF 51762-1BBCCCODEF; 51762-1BBCCCODEFL
- RIGHT END POWER CONTACTS, 01 TO 19 AVAILABLE.
MAXIMUM OF 20 POWER CONTACTS PER CONNECTOR
- SIGNAL CONTACTS, 004 TO 148 AVAILABLE FOR SOLDER TO BOARD.
020 TO 148 AVAILABLE FOR PRESS-FIT TO BOARD.
- THIS PART NOT AVAILABLE WITH LEFT SIDE POWER CONTACTS.
- TAIL OPTIONS:
A = .135 ± .010 [3.43 ± .25] SOLDER TO BOARD
B = .090 ± .005 / -.010 [2.29 ± 0.13 / -.025] SOLDER TO BOARD
C = .154 ± .010 [3.91 ± 0.25] PRESS-FIT TO BOARD

- RETENTION TO PCB OPTIONS:
A = BOARD LOCK (REQUIRES .098 ± .002 / -.001 [2.49 ± 0.05 / -0.03] THRU HOLE IN PCB MOUNTING FOOT HEIGHT: .220 [5.59])
NOT AVAILABLE FOR PRESS-FIT
B = .150 [3.81] THRU HOLE (REQUIRES .158 ± 0.003 [4.01 ± 0.08] THRU HOLE IN PCB). MOUNTING FOOT HEIGHT: .160 [4.06])
ALWAYS AVAILABLE FOR PRESS-FIT
- MANUFACTURE'S NAME, P/N, AND DATE CODE TO APPEAR ON THIS SURFACE.
- THE MAXIMUM OVERALL LENGTH (DIM A) OF A PART IS 8.00 [203.2]
- PRODUCT SPECIFICATION GS-12-149
- APPLICATION SPECIFICATION BUS-20-067.
- FOR PRESS-FIT CONNECTORS USE FCJ CAM TOOL 430140-XXX TO APPLY CONNECTOR TO PCB.

PCB NOTES:

- ALL DIMENSIONS ARE BASIC UNLESS OTHERWISE SPECIFIED.
- ALL THROUGH HOLES ARE LOCATED WITH A TRUE POSITION OF .004 [0.10]
- ALL HOLE DIAMETERS ARE FINISHED HOLE SIZE.
- Ø 0.0453 ± .001 [1.151 ± 0.02] DRILLED HOLES PLATED WITH 0.0003 [0.007] MIN SnPb OVER 0.001 [1.03] TO .003 [0.08] PLATING TO ACHIEVE A .040 ± .003 [1.02 ± 0.08] HOLE.
- A Δ SYMBOL WILL BE NEXT TO ANY DIMENSION, VIEW, OR NOTE WHICH HAS BEEN MODIFIED WITH THE CURRENT DRAWING REVISION.

THIS FILE WAS ORIGINALLY CREATED IN THE PRO ENGINEER ENVIRONMENT AND ANY FUTURE REVISIONS TO THIS FILE MUST BE MADE IN THE PRO ENGINEER ENVIRONMENT

mat'l code				tolerances unless otherwise specified		CUSTOMER COPY		FCJ www.fcjconnect.com	
lfr	ecm no.	dr	date	linear	.XX±.01 / X±.3	projection	title		code
K				angles	.XXX±.005 / XX±.13		RIGHT ANGLE RECEPTACLE w/GUIDE PIN POWER / SIGNAL		213
				DRDLE	05-18-99	INCH / MM	product family	PWRBLADE	code
				eng	J. BROWN 05-18-99	scale	size	51762	213
				chr	J. BROWN 05-18-99	1:1	dwg no	51762	SHEET 2 OF 3
				appd	J. BROWN 05-18-99				
sheet index	revision sheet								

form no. 7530-001-103

1 | 2

3 |

cage code 22526

4

PDM: Rev:K

STATUS:Released

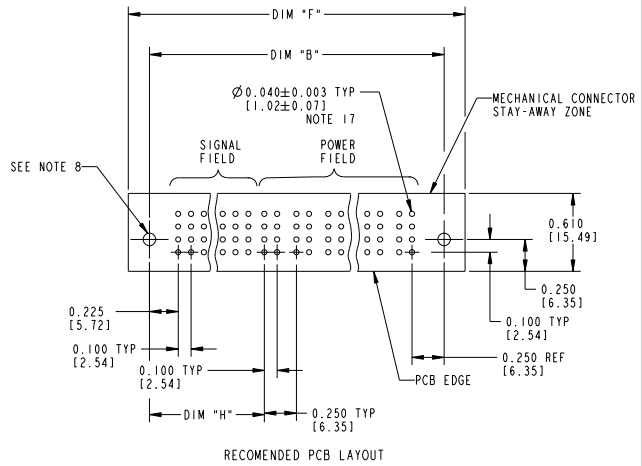
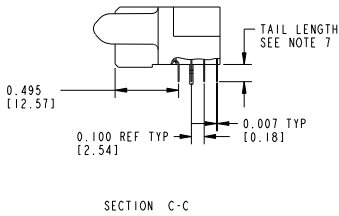
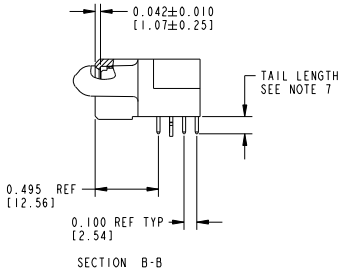
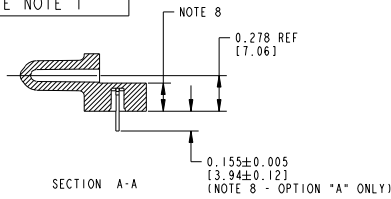
Printed: Dec 20, 2010

Tous droits strictement réservés. Reproduction ou communication à des tiers sans autorisation écrite du propriétaire. Propriété de FCJ. Droits de reproduction FCJ.



All rights strictly reserved. Reproduction or issue to third parties in any form or by any means without written authority from the proprietor. Property of FCJ. Copyright FCJ.

PRODUCT NUMBER
51762-ABBCC00EF...
Note: ③
SEE NOTE 1



mat'l code				tolerances unless otherwise specified		CUSTOMER		FCJ		www.fcjconnect.com	
lfr	ecm no.	dr	date	linear	.XX±.01/ X±.3	COPY		projection		title	
K				angles	.XXX±.005/ X±.13	INCH / MM		A		RIGHT ANGLE RECEPTACLE w/GUIDE PIN POWER / SIGNAL	
				dr	.XXXX±.0020/ XXX±.051	scale		1:1		product family	
				eng	DOUBLE	A		A		PWRBLADE	
				chr	J. BROWN 05-09-09	size		51762		code	
				appd	J. BROWN 05-09-09	code		213		SHEET	
sheet	revision									3 OF 3	
index	sheet									3	

form no. 7530-001-I03

cage code 22526

PDM: Rev:K

STATUS:Released

Printed: Dec 20, 2010