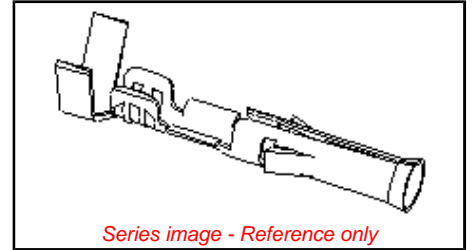


**Part Number:** [0002091119](#)

**Status:** **Active**

**Overview:** Standard .093"

**Description:** 2.36mm (.093") Diameter, Standard .093" Pin and Socket Crimp Terminal, Series 1381, Female, with Tin (Sn) Plated Brass Contact, 18-22 AWG, Bag



Series image - Reference only

### General

|                |                       |
|----------------|-----------------------|
| Product Family | Crimp Terminals       |
| Series         | 1381                  |
| Overview       | <u>Standard .093"</u> |
| Product Name   | Standard .093"        |

### Physical

|                                |                          |
|--------------------------------|--------------------------|
| Durability (mating cycles) min | 25 cycles                |
| Gender                         | Female                   |
| Material - Metal               | Brass                    |
| Material - Plating Mating      | Tin                      |
| Material - Plating Termination | Tin                      |
| Packaging Type                 | Bag                      |
| Plating min: Mating (µin)      | 20                       |
| Plating min: Mating (µm)       | 0.50                     |
| Plating min: Termination (µin) | 20                       |
| Plating min: Termination (µm)  | 0.50                     |
| Termination Interface: Style   | Crimp or Compression     |
| Wire Insulation Diameter       | 1.52-3.05mm (.060-.120") |
| Wire Size AWG                  | 18                       |
| Wire Size AWG                  | 20                       |
| Wire Size AWG                  | 22                       |
| Wire Size mm <sup>2</sup>      | N/A                      |

### Material Info

|                 |               |
|-----------------|---------------|
| Old Part Number | 1381-A(P901)L |
|-----------------|---------------|

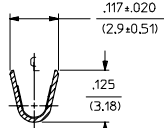
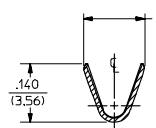
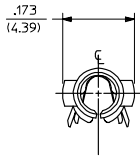
### EU RoHS

ELV and RoHS  
Compliant

### China RoHS

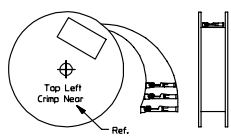


| PART NO.   | ENG. NO.      |
|------------|---------------|
| 02-09-1119 | 1381-A(P901)L |
| 02-09-1117 | 1381-A(P901)  |
| 02-09-1115 | 1381-A(P901)1 |
| 02-09-5133 | 1381-A(P591)L |
| 02-09-5130 | 1381-A(P591)  |
| 02-09-5142 | 1381-A(P550)L |
| 02-09-5143 | 1381-A(550)   |



SECT. "A-A"

SECT. "B-B"

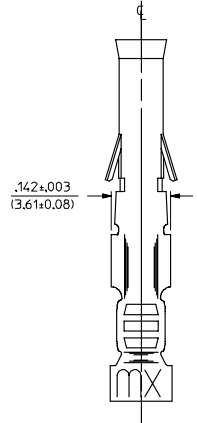
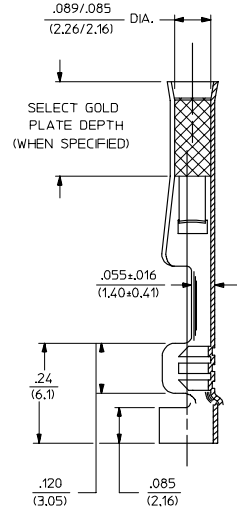
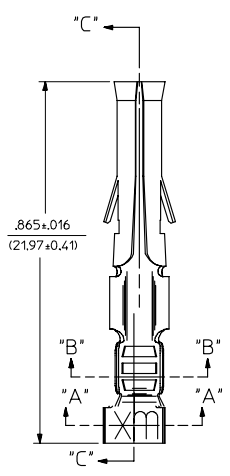


STANDARD CHAIN

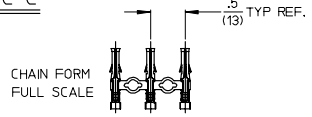
LEGEND

1381-A(\* \* \* \* \*)\*

- P = PREPLATE
- BLANK = POSTPLATE
- FORM
- BLANK = STD. CHAIN
- 1 = STD. CHAIN WITH INTERLEAF PAPER
- L = LOOSE
- FINISH CODE



SECT. "C-C"

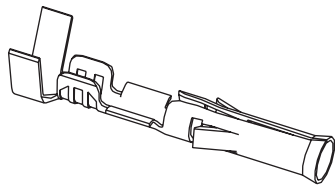


- NOTES:
- MATERIAL: BRASS
  - FINISH:
    - 901 HOT TIN DIP .000020/(0.00051) MIN.
    - 591 SELECT GOLD PLATE .000050/(0.00127) MIN. IN CONTACT AREA, OVER .000050/(0.00127) MIN. NICKEL OVERALL WITH .00010/(0.00251) MAX. GOLD FLASH OVERALL.
    - 550 SELECT GOLD PLATE .000015/(0.00038) MIN. IN CONTACT AREA, OVER .000030/(0.00076) MIN. NICKEL OVERALL WITH .00010/(0.00251) MAX. GOLD FLASH OVERALL.
  - PRODUCT SPECIFICATION PS-43660-9999.
  - PACKAGING INFORMATION: NOT AVAILABLE
  - TERMINAL FOR USE WITH .093/(2.36) SERIES HOUSINGS AND WILL ACCEPT 18-22 AWG WIRE
  - INSERTION FORCE: 3.5 LBS. MAX. WHEN TERMINAL IS INSERTED INTO AN .093 SERIES HOUSING.
  - TERMINAL RETENTION: 20 LBS. MIN. FROM HOUSING.

|  |                      |                                       |                         |   |                        |                        |
|--|----------------------|---------------------------------------|-------------------------|---|------------------------|------------------------|
| REMOVE DIMPLE P/NS<br>EC NO. UCP2006-2900<br>DRAWN BY 2006/06/29<br>CHECKED BY 2006/07/05<br>APPROVED BY 2006/07/05<br>REV DESCRIPTION | QUALITY SYMBOLS      | GENERAL TOLERANCES (UNLESS SPECIFIED) | DIMENSION STYLE IN/MM   | SCALE 6:1   | DESIGN UNITS INCH      | THIRD ANGLE PROJECTION |
|  | ▽=0                  | 4 PLACES ± --- ± ---                  | DRAWN BY SEP 1987/11/06 | TITLE   | CRIMP TERMINAL, FEMALE |                        |
|  | ▽=0                  | 3 PLACES ± --- ± .005                 | CHECKED BY DATE         | .093/(2.36) DIA.  |                        |                        |
|  |                      | 2 PLACES ± .13 ± .010                 | APPROVED BY DATE        | 18-22 AWG   |                        |                        |
|  | 1 PLACE ± 0.25 ± --- | ANGULAR ±1/2°                         | MATERIAL NO. SEE CHART  | DOCUMENT NO. SD-1381-*  | MOLEX INCORPORATED     |                        |
| DRAFT WHERE APPLICABLE MUST REMAIN WITHIN DIMENSIONS   |                      | SIZE C                                |                         | THIS DRAWING CONTAINS INFORMATION THAT IS PROPRIETARY TO MOLEX INCORPORATED AND SHOULD NOT BE USED WITHOUT WRITTEN PERMISSION |                        |                        |

## 2.36mm (.093") Pin Diameter .093" Pin and Socket Female Terminals

Standard .093" and 3191



### Features and Benefits

- Available in Tin or Gold platings
- Available in Brass or Phosphor Bronze base materials
- Accommodates 14 to 30 gauge wire
- Available in crimp or PC tail versions

### Reference Information

Packaging: Bag or reel  
UL File No.: E29179  
CSA File No.: LR19980  
Designed In: Inches

### Electrical

Current: Standard Terminal—14.0A max.\*  
High Current Terminal—17.0A max.\*  
Contact Resistance: 10 milliohms max.

### Mechanical

Contact Insertion Force: 22.29N max.  
Contact Retention Force: 88.96N min.  
Mating force: 15.57N max.  
Unmating Force: 4.45N max.  
Durability: Tin plating—25 cycles max.  
Gold plating—50 cycles max.

### Physical

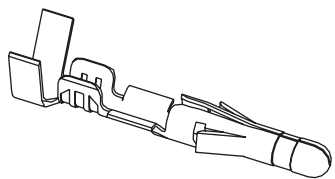
Contact: Brass or Phosphor Bronze  
Plating: Tin or Gold  
Operating Temperature: -40 to +105°C  
Strip Length: See tooling section

\* Depending on circuit size and wire gauge. Please refer to product specifications

| Type                               | Plating   | Crimp Wire Size | Insulation Diameter   | Series | Order No.                  |                            | Lead-free |
|------------------------------------|-----------|-----------------|-----------------------|--------|----------------------------|----------------------------|-----------|
|                                    |           |                 |                       |        | Chain Form                 | Loose Form                 |           |
| Standard Brass .010"               | Tin       | 14-20           | 1.65/4.06 (.065/.160) | 1189   | <a href="#">02-09-1102</a> | <a href="#">02-09-1104</a> | Yes       |
|                                    |           | 18-22           | 1.52/3.05 (.060/.120) | 1381   | <a href="#">02-09-1117</a> | <a href="#">02-09-1119</a> |           |
|                                    |           | 22-24           | 1.27/1.78 (.050/.070) | 2871   | <a href="#">02-09-1138</a> | <a href="#">02-09-1139</a> |           |
|                                    |           | 24-30           | 0.76/1.52 (.030/.060) | 1433   | <a href="#">02-09-1142</a> | <a href="#">02-09-1144</a> |           |
|                                    | 15µ" Gold | 14-20           | 1.65/4.06 (.065/.160) | 1189   | <a href="#">02-09-5100</a> | <a href="#">02-09-5106</a> |           |
|                                    |           | 18-22           | 1.52/3.05 (.060/.120) | 1381   | <a href="#">02-09-5143</a> | <a href="#">02-09-5142</a> |           |
|                                    |           | 24-30           | 0.76/1.52 (.030/.060) | 1433   | <a href="#">02-09-5146</a> | <a href="#">02-09-5147</a> |           |
|                                    | 50µ" Gold | 14-20           | 1.65/4.06 (.065/.160) | 1189   | <a href="#">02-09-5102</a> | <a href="#">02-09-5111</a> |           |
|                                    |           | 18-22           | 1.52/3.05 (.060/.120) | 1381   | <a href="#">02-09-5130</a> | <a href="#">02-09-5133</a> |           |
| .013" High Current/Low Force       | Tin       | 14-18           | 3.56 (.140) max.      | 42477  | <a href="#">02-09-1615</a> | <a href="#">02-09-1616</a> |           |
| PC Tail for Standard .093" Housing | Tin       |                 |                       | 1377   |                            | <a href="#">02-09-1134</a> |           |
|                                    | 30µ" Gold |                 |                       |        | <a href="#">02-09-5132</a> |                            |           |
| Phos-Bronze .010"                  | Tin       | 14-20           | 1.65/4.06 (.065/.160) | 4550   | <a href="#">02-09-1205</a> | <a href="#">02-09-1206</a> |           |
|                                    |           | 18-22           | 1.52/3.05 (.060/.120) | 2151   | <a href="#">02-09-1203</a> | <a href="#">02-09-1204</a> |           |
|                                    | 30µ" Gold | 14-20           | 1.65/4.06 (.065/.160) | 4550   | <a href="#">02-09-5169</a> | <a href="#">02-09-5170</a> |           |

## 2.36mm (.093") Pin Diameter .093" Pin and Socket Male Terminals

Standard .093" and 3191



### Features and Benefits

- Available in Tin or Gold platings
- Available in Brass or Phosphor Bronze base materials
- Accommodates 14 to 30 gauge wire
- Available in crimp or PC tail versions

### Reference Information

Packaging: Bag or reel  
UL File No.: E29179  
CSA File No.: LR19980  
Designed In: Inches

### Electrical

Current: Standard terminal—14.0A max.\*  
High Current Terminal—17.0A max.\*  
Contact Resistance: 10 milliohms max

### Mechanical

Contact Insertion Force: 22.24N max.  
Contact Retention Force: 88.96N min.  
Mating Force: 15.57N max.  
Unmating Force: 4.45N max.  
Durability: Tin plating—25 cycles max.  
Gold plating—50 cycles max.

### Physical

Contact: Brass or Phosphor Bronze  
Plating: Tin or Gold  
Operating Temperature: -40 to +105°C

\* Depending on circuit size and wire gauge; please refer to product specifications

| Type                               | Plating   | Crimp Wire Size | Insulation Diameter   | Series | Order No.                  |                            | Lead-free |
|------------------------------------|-----------|-----------------|-----------------------|--------|----------------------------|----------------------------|-----------|
|                                    |           |                 |                       |        | Chain Form                 | Loose Form                 |           |
| Standard Brass .010"               | Tin       | 14-20           | 1.65/4.06 (.065/.160) | 1190   | <a href="#">02-09-2101</a> | <a href="#">02-09-2103</a> | Yes       |
|                                    |           | 18-22           | 1.52/3.05 (.060/.120) | 1380   | <a href="#">02-09-2116</a> | <a href="#">02-09-2118</a> |           |
|                                    |           | 22-24           | 1.27/1.78 (.050/.070) | 2870   | <a href="#">02-09-2136</a> | <a href="#">02-09-2137</a> |           |
|                                    |           | 24-30           | 0.76/1.52 (.030/.060) | 1434   | <a href="#">02-09-2141</a> | <a href="#">02-09-2143</a> |           |
|                                    | 15µ" Gold | 14-20           | 1.65/4.06 (.065/.160) | 1190   | <a href="#">02-09-6100</a> | <a href="#">02-09-6106</a> |           |
|                                    |           | 18-22           | 1.52/3.05 (.060/.120) | 1380   | <a href="#">02-09-6122</a> | <a href="#">02-09-6123</a> |           |
|                                    |           | 24-30           | 0.76/1.52 (.030/.060) | 1434   | <a href="#">02-09-6144</a> | <a href="#">02-09-6145</a> |           |
|                                    | 50µ" Gold | 14-20           | 1.65/4.06 (.065/.160) | 1190   | <a href="#">02-09-6101</a> | <a href="#">02-09-6110</a> |           |
|                                    |           | 18-22           | 1.52/3.05 (.060/.120) | 1380   | <a href="#">02-09-6125</a> | <a href="#">02-09-6126</a> |           |
| Grounding Pin                      | Tin       | 14-18           | 1.65/3.56 (.065/.140) | 1973-2 | <a href="#">02-09-8108</a> | <a href="#">02-09-8109</a> |           |
|                                    |           | 18-22           | 1.52/3.05 (.060/.120) | 1973   | <a href="#">02-09-8103</a> | <a href="#">02-09-8104</a> |           |
| .013" High Current/Low Force       | Tin       | 14-18           | 3.56 (.140) max.      | 42478  | <a href="#">02-09-2611</a> | <a href="#">02-09-2612</a> |           |
| PC Tail for Standard .093" Housing | Tin       |                 |                       | 1376   |                            | <a href="#">02-09-2134</a> |           |
|                                    | 30µ" Gold |                 |                       | 1376   |                            | <a href="#">02-09-6132</a> |           |