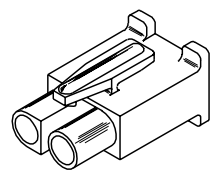
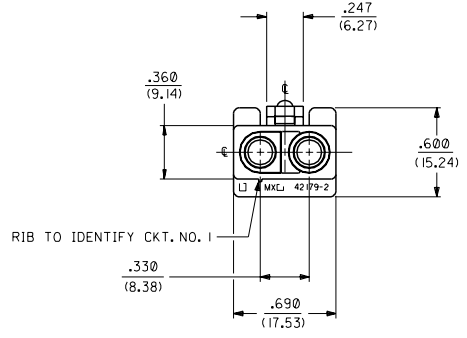
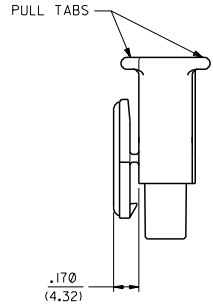
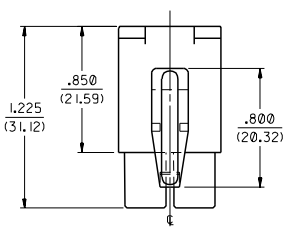
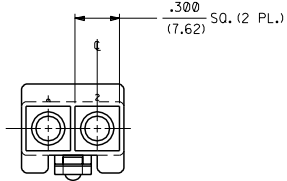


13 12 11 10 9 8 7 6 42179 4 3 2 1



RECEPTACLE

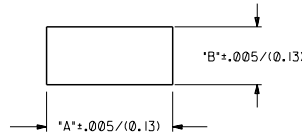
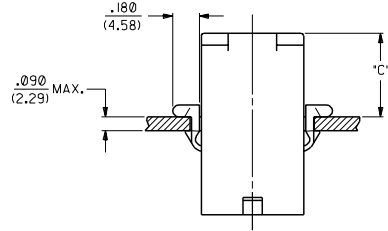
H	OBsolete P/N's UCR 1998-0128 COMERCI 01/9/18
G1	REVISED UCR 1998-0128 WANG 98-04-03
G	REL. -2P IRD, -2R IRD ECN #U4 0209 RW 2-14-94
F2	ADD -2P IRD, -2R IRD ECN #U4 0103 RW 1-25-94
F1	REL. -2R BK, -2PB ECN #U3 0685 RW 4-6-93
F	DEL 94V-0 MAT'L ECR U2-1639 AFG 92-11-20 RW
E	REVISE PER ECR U2 0211 C/C 2/10/92 RW
D	REVISED PER ECR #U00189 7-3-90 TRM
C	REVISED LATCH ECR # U90011 KBW 03-31-89 RW
B	REV. PICTORIALY ECR U8 2272 GEP 12-15-88 RW
A	REV. & FINAL REL. ERO 27381 GEP 10-18-88 RW
I	**X* REL. PER ERO 26889 GEP 7-21-88 RW

DIMENSIONS SHOWN IN METRIC INCH		TOLERANCES ANGULAR 1 DEG TO	
± PLACE	INCH	± PLACE	METRIC
± PLACE	± .007	± PLACE	± .018
± PLACE	---	± PLACE	± 0.25
DRAFT WHERE APPLICABLE MUST REMAIN WITHIN DIMENSIONS			
DRWG. BY: GEP	CHK'D. BY: RW	FILE NAME: 5421792X1	DATE: 7/26/88
APP'D. BY: RAS	SCALE: 2 : 1	MOLEX INCORPORATED	U.S.A.
SEE CHART		SD-42179-2	
THIS DRAWING CONTAINS INFORMATION THAT IS PROPRIETARY TO MOLEX INC. AND SHOULD NOT BE USED WITHOUT WRITTEN PERMISSION.		CP C	

13 12 11 10 9 8 7 6 5 4 3 2 1 NO P.S.1

PLUG		
PART NO.	ENG. NO.	
03-12-2026	42179-2P1	
03-12-2025	42179-2P	
03-12-7021	42179-2PBK	OBSOLETE
03-12-7022	42179-2P1RD	OBSOLETE

RECEPTACLE		
PART NO.	ENG. NO.	
03-12-1026	42179-2R1	
03-12-6021	42179-2R1BK	OBSOLETE
03-12-6022	42179-2R1RD	OBSOLETE



RECOMMENDED HOLE CUTOUT

HOUSING	DIM. "A"	DIM. "B"	DIM. "C"
PLUG	.851/(21.62)	.440/(11.18)	.57/(14.5)

LEGEND:

42179-2****-*

CIRCUIT SIZE: _____

HOUSING TYPE: _____

P = PLUG

R = RECEPTACLE

MOUNTING EAR OPTION: _____

BLANK = WITH PREBENT EARS, PLUG ONLY

I = WITHOUT EARS

COLOR: _____

BLANK = 94V-2; TRANSLUCENT NATURAL COLOR

AM=AMBER BK=BLACK BU=BLUE

BN=BROWN GY=GRAY GN=GREEN

OR=ORANGE RD=RED YW=YELLOW

MATERIAL: _____

BLANK = NYLON 6/6, U.L. 94V-2

NOTES:

- PART ACCEPTS A MAXIMUM .250/(6.35) INSULATION DIA.
- FOR USE WITH MOLEX .125/(3.17) DIAMETER SERIES TERMINALS EXCEPT THE 1219/1220 SERIES.
- THIS PART IS THE SAME AS 42348-2 EXCEPT FOR POLARIZATION OF FIRST CIRCUIT.

		F2	SEE SHEET I
		F1	SEE SHEET I
		F	SEE SHEET I
		D	SEE SHEET I
H	SEE SHEET I	B	SEE SHT. I
G1	SEE SHEET I	A	SEE SHT. I
G	SEE SHEET I	I	SEE SHT. I
LTR.	REVISIONS	LTR.	REVISIONS

DIMENSIONS SHOWN METRIC INCH
UNLESS OTHERWISE SPECIFIED
TOLERANCES ANGULAR 1/2° TO 1°

	INCH	METRIC
2 PLACE	± .007	---
3 PLACE	± .010	± 0.18
1 PLACE	---	± 0.25

DRAFT WHERE APPLICABLE MUST REMAIN WITHIN DIMENSIONS

DRW. BY: GEP
APP'D: RAS
SCALE: 2 : 1

REV. BY: RW

FILE NAME: 5421792X3

THIS DRAWING CONTAINS INFORMATION THAT IS PROPRIETARY TO MOLEX INC. AND SHOULD NOT BE USED WITHOUT WRITTEN PERMISSION.

REVISE ONLY ON CAD SYSTEM

TITLE: .125/(3.17) HOUSING, PLUG AND RECEPTACLE, 2 CKT., .330/(8.38) CTR.

MOLEX INCORPORATED
U.S.A.
68532

PART NO. SD-42179-2*

SHEET NO. 3
DATE 7/26/88

DRWG. NO. CP C