

Piezoelectric Sound Components



Piezoelectric Buzzers

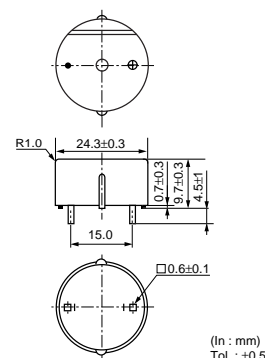
This is a unified piezoelectric sounder which has a piezoelectric diaphragm of 3 terminals connected to a self drive circuit, and it easily generates sound with only a DC power supply (DC3.0-20V). Using suitably designed resonant system, this type can be used where large sound volumes are needed.

Applications

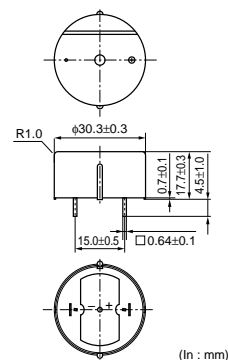
1. Gas alarms, burglar alarms
2. Air conditioners, microwave ovens and various types of microcomputer controlled home-electronic appliances
3. Automobile speed alarms, navigators, car stereos and other automobile equipment
4. Toys, games, and other simple electronic devices such as teaching aids



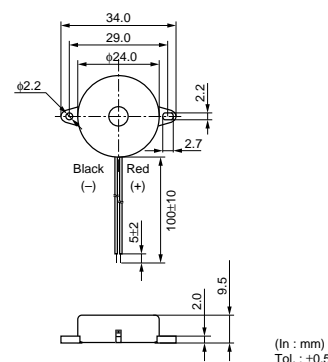
PKB24SPCH3601-B0



PKB30SPCH2001/3001-B0



PKB24SWH3301



Pin Type

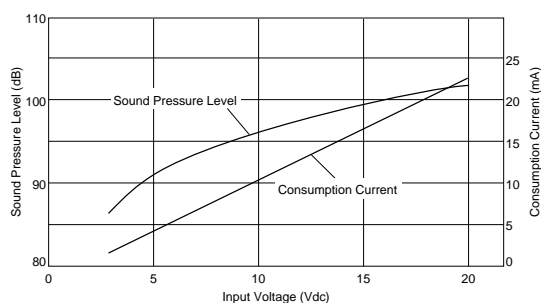
Part Number	Sound Pressure Level (dB)	Oscillating Frequency (kHz)	Current Consumption (mA)	Operating Voltage Range	Operating Temp. Range (°C)	Storage Temp. Range (°C)
PKB24SPCH3601-B0	90 min. [12Vdc, 10cm]	3.6 ±0.5kHz [12Vdc]	16 max. [12Vdc]	3.0Vdc to 15.0 Vdc	-20 to +70	-30 to +80
PKB30SPCH2001-B0	92 min. [12Vdc, 10cm]	2.0 ±0.4kHz [12Vdc]	15 max. [12Vdc]	3.0Vdc to 15.0 Vdc	-20 to +70	-30 to +80
PKB30SPCH3001-B0	92 min. [12Vdc, 10cm]	2.7 ±0.4kHz [12Vdc]	15 max. [12Vdc]	3.0Vdc to 15.0 Vdc	-20 to +70	-30 to +80

Lead Wire Type

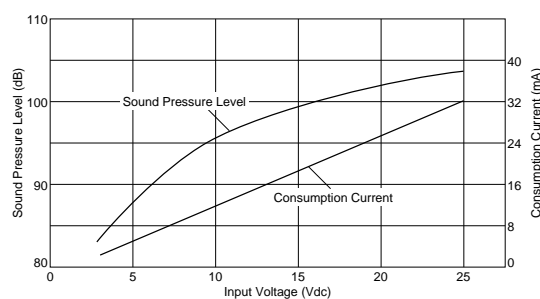
Part Number	Sound Pressure Level (dB)	Oscillating Frequency (kHz)	Current Consumption (mA)	Operating Voltage Range	Operating Temp. Range (°C)	Storage Temp. Range (°C)
PKB24SWH3301	80 min. [12Vdc, 10cm]	3.3 ±0.5kHz [12Vdc]	12 max. [12Vdc]	3.0Vdc to 20.0 Vdc	-20 to +70	-30 to +80

■ Voltage-Sound Pressure Level/Voltage-Consumption Current

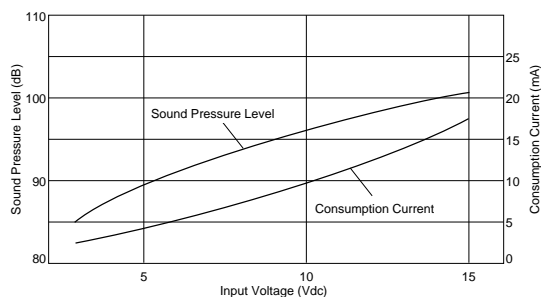
PKB24SPCH3601-B0



PKB30SPCH2001-B0



PKB30SPCH3001-B0



PKB24SW-3301

