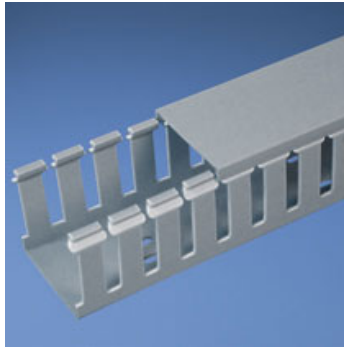




## G3X3LG6

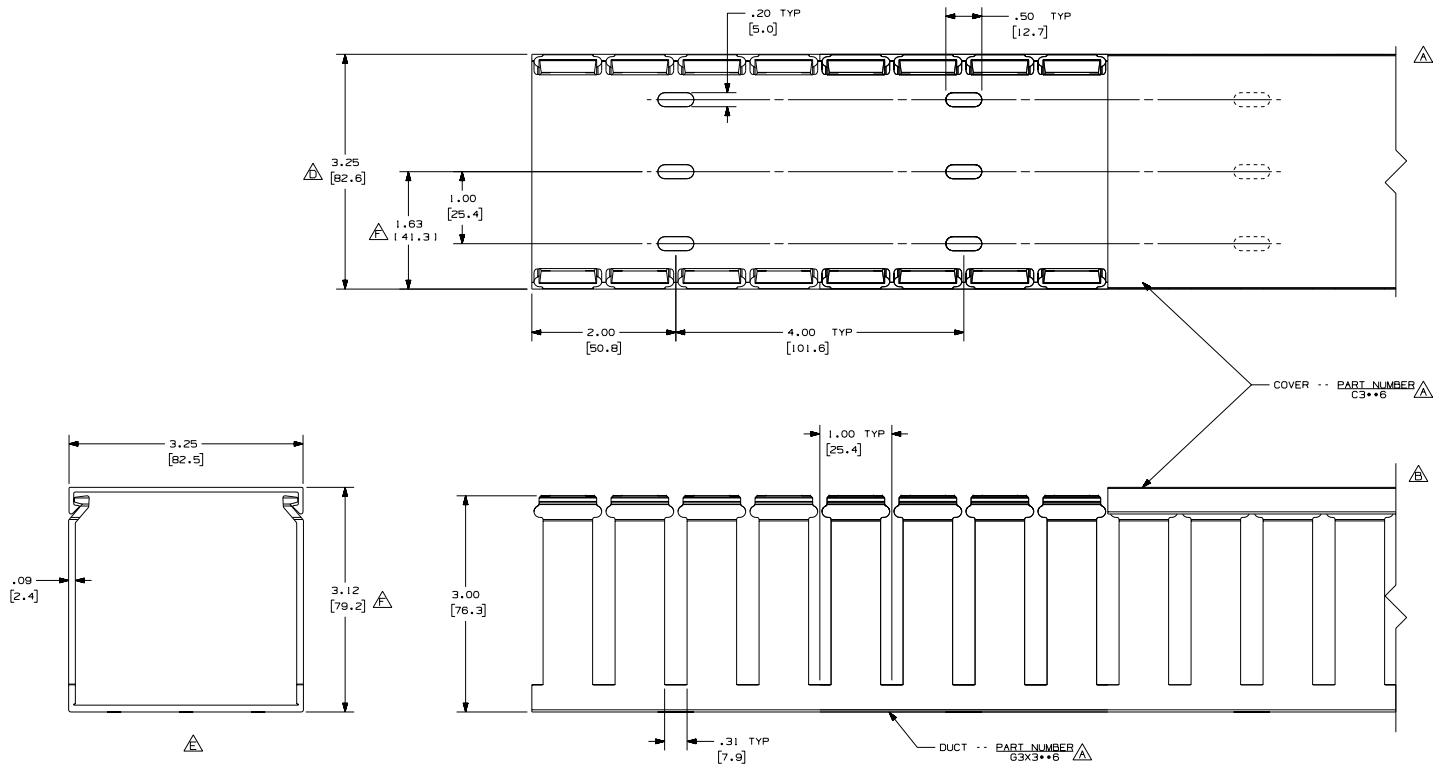


- Choose from 36 sizes of *PANDUIT*® Type G Wiring Duct from 0.5" x 0.5" up to 6.0" x 4.0" in popular colors. Used for general purpose control panel wiring and to route and protect wiring in communication closets. The non-slip cover conceals all wiring and is easy to install. The duct and cover form a flush sidewall providing increased capacity and improved aesthetics.
- **Specifications**
  - Made of lead-free PVC
  - UL Recognized continuous use temperature: 122 °F (50°C)
  - UL94 Flammability Rating of V-0
  - Conforms with NFPA 79-2002 section 14.3.1 requirement for flame retardant material
  - Provided with mounting holes
- **Features and Benefits**
  - Wide finger/slot design provides greater sidewall rigidity and can be used with a wide range of wire bundle sizes
  - *PANDUIT*® exclusive rounded edges protects hands and wiring/cablings from abrasion
  - Non-slip cover stays in place during shipment, vibration and when in vertical orientation, eliminating rework
  - Flush cover design holds 10-12% more wires than traditional duct designs
  - Double scoreline allows quick modification for larger cabling bundles saving installation time leading to a lower installed cost
  - Specially formulated lead-free material eliminates health concerns associated with PVC that contains lead
  - Restricted slot design retains wire in slot for fast, easy wire installation or removal
- Base and cover sold separately.

• Part Number	G3X3LG6
• RoHS Compliancy Status	Compliant
• Part Description	Wide finger, slotted wiring duct.
• Material	Lead-Free PVC
• Color	Light Gray
• CSA Certified	Yes
• UL Recognized (File No. E147128)	Yes
• Length (ft.)	6
• CE Marking	Yes
• Duct Size W x H (In.)	3.25 x 3.12
• Duct Size W x H (mm)	82.6 x 79.2
• Mounting Method	Standard Mounting Holes
• Pricing Description	Slotted Duct, PVC, 3"X3"X6', LGRY
• Slot Width (In.)	.31
• Slot Width (mm)	7.9

- Cover Part Number C3LG6
- Min. Order UOM FT
- Min. Order Qty. 6
- BOM Qty. (# of Pkgs.)

THIS COPY IS PROVIDED ON A RESTRICTED BASIS AND IS NOT TO BE USED IN ANY WAY DETRIMENTAL TO THE INTERESTS OF PANDUIT CORP.



NOTES:

1. ALL DIMENSIONS ARE REFERENCE ONLY.
2. DIMENSIONS IN PARENTHESIS ARE METRIC.
3. THE \*\* DENOTE COLOR.
4. DUCT AND COVER ARE AVAILABLE IN 6 FT (1828.8) LENGTHS.

REV	DATE	BY	CHK	DESCRIPTION	DESIGNER	MATERIAL	SCALE	DRAWING NO.	DATE	SIZE
1	5-20-04	JCST	MKB	B. CHANGED VIEW	JCG	PVC	FULL	36897-711	3-5-03	C
R	3-5-03	JCST	JCG	DRAWING RELEASED	JCG					
2	7-6-07	JCST	MKB	E. DELETED DIMENSION						
..	..	..	..	G. ADDED LENGTH NOTE						
..	..	..	..	F. CORRECTED DIMENSION						
..	..	..	..	D. ADDED DIMENSION						
..	..	..	..	C. CHANGED DRAWING SIZE						

D110000Y\_DC\_00C  
**PANDUIT** CORP., TINLEY PARK, ILLINOIS  
 WIRING DUCT - TYPE G DUCT WITH COVER  
 3X3  
 MARKETING DRAWING  
 DATE: 3-5-03  
 SCALE: FULL  
 DRAWING NO.: 36897-711  
 DATE: 3-5-03  
 SIZE: C