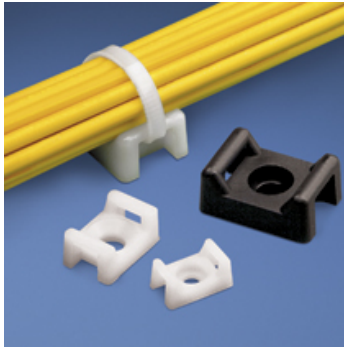




TM2S8-M



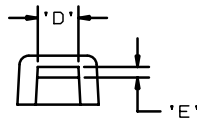
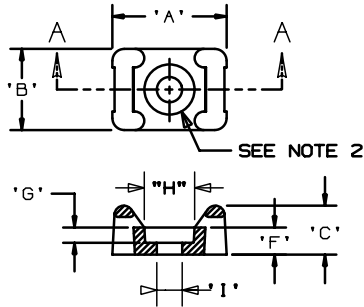
- Unique cradle design provides maximum stability for cable bundle
- Low profile design keeps bundle close to mounting surface where overhead space is limited
- ‡Cable tie cross section sizes: M = Miniature, I = Intermediate, S = Standard, HS = Heavy Standard, LH = Light-Heavy

▪ Part Number	TM2S8-M
▪ RoHS Compliancy Status	Compliant
▪ Part Description	Cable Tie Mount - Screw Applied
▪ Material	Nylon 6.6
▪ Color	Natural
▪ UL Recognized	E136577
▪ Height (In.)	.28
▪ Height (mm)	7.0
▪ Length (In.)	.63
▪ Length (mm)	16.0
▪ Width (In.)	.43
▪ Width (mm)	10.8
▪ CE Compliant	CT-ACC2 / 10.96
▪ Environment	Indoors
▪ Flammability Rating	UL94 V-2
▪ Max. Bundle Diameter (mm)	4.8
▪ Mounting Method	#8 (M4) screw
▪ Pricing Description	Cable Tie Mount, .43" (10.9mm)W, #8 Screw (M4), Nylon
▪ Screw Size	#8 (M4)
▪ Screw Size Metric	M4
▪ Used With Cable Ties	M, I, S
▪ Min. Order UOM	PC
▪ Min. Order Qty.	1000
▪ BOM Qty. (# of Pkgs.)	

THIS COPY IS PROVIDED ON A RESTRICTED BASIS AND IS NOT TO BE USED IN ANY WAY DETRIMENTAL TO THE INTERESTS OF PANDUIT CORP.

PANDUIT PART NO.*	MAT'L SUFFIX	RECOMMENDED FASTENER	'A'	'B'	'C'	'D'	'E'	'F'	'G' (REF)	'H' (REF)	'I' (REF)	USE WITH THESE CABLE TIE CROSS SECTIONS	WEIGHT (g) lbs/100 pcs.
TM2S6	NONE -0 -30 -69 -120	#6 (M3) SCREW							0.090 (2.3)	0.286	0.151	MINIATURE INTERMEDIATE STANDARD	0.126 (57.0)
TM2S8	NONE -0 -30 -69	#8 (M4) SCREW	0.630 (16.000)	0.425 (10.795)	0.275 (6.985)	0.215 (5.460)	0.060 (1.525)	0.155 (3.937)	0.105 (2.7)	0.332	0.176		0.113 (51.5)

MAT'L SUFFIX	MATERIAL
NONE	NYLON 6/6
-0	WEATHER RESISTANT NYLON
-30	HEAT STABILIZED NYLON
-69	FLAME RETARDANT NYLON
-120	NYLON 12



- NOTES:
 *1. SEE CURRENT PRICE SHEET FOR PART NUMBER SUFFIX DESIGNATION FOR PACKAGE SIZE.
 2. HOLE DIMENSIONS SHOULD ACCOMMODATE SPECIFIED RECOMMENDED FASTENER.

DIMENSIONS IN BRACKETS ARE METRIC (mm)

010 FILES/LAYERS G00239EM_PB_TM2S_A_06

PANDUIT CORP. TINLEY PARK, ILLINOIS

TM2S - TIE MOUNT

UNLESS OTHERWISE SPECIFIED, DIMENSIONAL TOLERANCES ARE:
 (.X) ±0.05 (1.3) (.XXX) ±0.010 (0.25)
 (.XX) ±0.02 (0.5) ANGLES ± 5°

UNLESS OTHERWISE SPECIFIED, ALL DIMENSIONS ARE GIVEN IN INCHES, THIRD ANGLE PROJECTION.

SCALE NONE

DRAWING NO. GB0239EM DWG SIZE A

DRWN BY AJV MAT'L'S SEE TABLE

DATE 12-17-98

REV 6

REV	DATE	BY	CHK	DESCRIPTION	ECN	R	CUST	SUP
6	12-19-02	LGG		ADDED 120 MATERIAL BACK TO DRAWING	GB0239EM	6		