



### TM1S6-C0



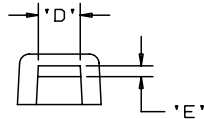
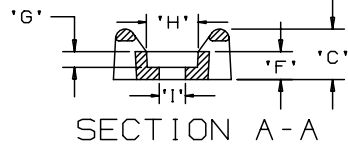
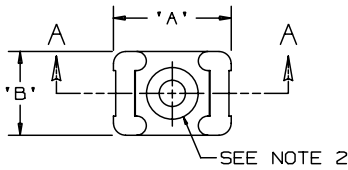
- Unique cradle design provides maximum stability for cable bundle
- Low profile design keeps bundle close to mounting surface where overhead space is limited
- ‡Cable tie cross section sizes: M = Miniature, I = Intermediate, S = Standard, HS = Heavy Standard, LH = Light-Heavy

▪ Part Number	TM1S6-C0
▪ RoHS Compliancy Status	Compliant
▪ Part Description	Cable Tie Mount - Screw Applied
▪ Material	Weather Resistant Nylon 6.6
▪ Color	Black
▪ UL Recognized	E136577
▪ Height (In.)	.23
▪ Height (mm)	5.8
▪ Length (In.)	.51
▪ Length (mm)	13.0
▪ Width (In.)	.32
▪ Width (mm)	9.5
▪ CE Compliant	CT-ACC2 / 10.96
▪ Environment	Outdoors
▪ Flammability Rating	UL94 V-2
▪ Hole Diameter (In.)	.14
▪ Hole Diameter (mm)	3.7
▪ Max. Bundle Diameter (mm)	2.5
▪ Mounting Method	#6 (M3) screw
▪ Pricing Description	Cable Tie Mount, .32" (8.1mm)W, #6 Screw (M3), Weather Resistant Nylon
▪ Screw Size	#6 (M3)
▪ Screw Size Metric	M3
▪ Used With Cable Ties	M
▪ Min. Order UOM	PC
▪ Min. Order Qty.	100
▪ BOM Qty. (# of Pkgs.)	

THIS COPY IS PROVIDED ON A RESTRICTED BASIS AND IS NOT TO BE USED IN ANY WAY DETRIMENTAL TO THE INTERESTS OF PANDUIT CORP.

PANDUIT PART NO.*	MAT'L SUFFIX	RECOMMENDED FASTENER	'A'	'B'	'C'	'D'	'E'	'F'	'G' (REF)	'H' (REF)	'I' (REF)	USE WITH THESE CABLE TIE CROSS SECTIONS	WEIGHT (g) lbs/100 pcs.
TMIS4	NONE -0 -30 -69	#4 (M2.5) SCREW	0.513 (13.0)	0.316 (8.0)	0.230 (5.8)	0.130 ±0.020 (3.3) ±(1.5)	0.067 ±0.020 (1.7) ±(1.5)	0.125 (3.2)	0.075 (1.9)	0.226	0.121	MINIATURE ONLY	0.064 (29.0)
TMIS6	NONE -0 -30 -69	#6 (M3) SCREW							0.080 (2.0)	0.277	0.146		0.057 (26.0)

MAT'L SUFFIX	MATERIAL
NONE	NYLON 6/6
-0	WEATHER RESISTANT NYLON
-30	HEAT STABILIZED NYLON
-69	FLAME RETARDANT NYLON



- NOTES:  
 \*1. SEE CURRENT PRICE SHEET FOR PART NUMBER SUFFIX DESIGNATION FOR PACKAGE SIZE.  
 2. HOLE DIMENSIONS SHOULD ACCOMMODATE SPECIFIED RECOMMENDED FASTENER.

DIMENSIONS IN BRACKETS ARE METRIC [ mm ]

CAD FILENAME/LAYERS G00239CN\_PB\_TMS\_A\_08

**PANDUIT** CORP. TINLEY PARK, ILLINOIS

TMIS - TIE MOUNT

UNLESS OTHERWISE SPECIFIED, DIMENSIONAL TOLERANCES ARE:  
 (.X) ±0.05 (1.3) (.XXX) ±0.010 (0.25)  
 (.XX) ±0.02 (0.5) ANGLES ±5°

UNLESS OTHERWISE SPECIFIED, ALL DIMENSIONS ARE GIVEN IN INCHES, THIRD ANGLE PROJECTION.

DRAWN BY GDH

MAT'L:

SCALE NONE

SEE TABLE

DRAWING NO.

G00239CN

DWG

A

SIZE

REV	DATE	BY	CHK	DESCRIPTION	ECN	R	CUST	SUP
8	8-8-05	TMSA		CHANGED RECOMMENDED FASTENER FROM M3.0 TO M2.5	G00239CN	8		