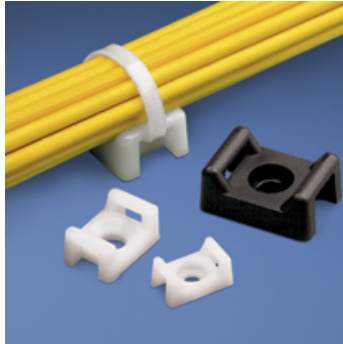




TM3S10-C



- Unique cradle design provides maximum stability for cable bundle
- Low profile design keeps bundle close to mounting surface where overhead space is limited
- ‡Cable tie cross section sizes: M = Miniature, I = Intermediate, S = Standard, HS = Heavy Standard, LH = Light-Heavy

• Part Number	TM3S10-C
• RoHS Compliancy Status	Compliant
• Part Description	Cable Tie Mount - Screw Applied
• Product Type	Cable Tie Mounts - Screw / Rivet Mounted
• Material	Nylon 6.6
• Color	Natural
• UL Recognized	E136577
• Height (In.)	.37
• Height (mm)	9.4
• Length (In.)	.86
• Length (mm)	21.9
• Width (In.)	.61
• Width (mm)	15.5
• CE Compliant	CT-ACC2 / 10.96
• Environment	Indoors
• Flammability Rating	UL94 V-2
• Hole Diameter (In.)	.19
• Hole Diameter (mm)	5.0
• Max. Bundle Diameter (mm)	7.6
• Mounting Method	#10 (M5) screw
• Pricing Description	Cable Tie Mount, .62" (15.8mm)W, #10 Screw (M5), Nylon
• Screw Size	#10 (M5)
• Screw Size Metric	M5
• Used With Cable Ties	M, I, S, LH
• Min. Order UOM	PC

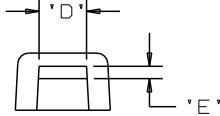
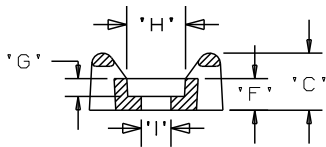
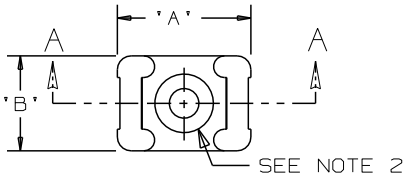
THIS COPY IS PROVIDED ON A RESTRICTED BASIS AND IS NOT TO BE USED IN ANY WAY DETRIMENTAL TO THE INTERESTS OF PANDUIT CORP.

PANDUIT PART NO.**	MAT'L SUFFIX	RECOMMENDED FASTENER	'A'	'B'	'C'	'D'	'E'	'F'	'G' 'REF'	'H' 'REF'	'I' 'REF'	USE WITH THESE CABLE TIE CROSS SECTIONS	WEIGHT (g) lbs/100 pcs.
TM3S8	NONE -0 -30 -49	#8 (M4) SCREW	0.863 (21.9)	0.610 (15.5)	0.373 (9.4)	0.320 (8.1) ±.020 (0.5)	0.088 (2.2) ±.020 (0.5)	0.208 (5.3)	0.105 (2.7)	0.325	0.180	MINIATURE INTERMEDIATE STANDARD LT. HEAVY	0.369 (167.5)
TM3S10	NONE -0 -30	#10 (M5) SCREW							0.115 (2.9)	0.385	0.200		0.363 (165.0)
TM3S25	NONE -0 -30	1/4" (M6) SCREW	0.879 (22.3)	0.629 (16.0)	0.379 (9.6)			0.210 (5.3)	0.155 (3.9)	0.506	0.262		0.296 (134.5)
TM3S2510	-30 -39	#10 (M5) SCREW	0.873 (22.2)	0.620 (15.7)				0.212 (5.4)	0.120 (3.0)	0.480	0.200		0.321 (145.5)

NOTES:

- *1. SEE CURRENT PRICE SHEET FOR PART NUMBER SUFFIX DESIGNATION FOR PACKAGE SIZE.
- 2. HOLE DIMENSIONS SHOULD ACCOMMODATE SPECIFIED RECOMMENDED FASTENER.

MAT'L SUFFIX	MATERIAL	COLOR
NONE	NYLON 6/6	NATURAL
-0	WEATHER RESISTANT NYLON	BLACK
-30	HEAT STABILIZED NYLON	
-39	HEAT STABILIZED NYLON	NATURAL
-49	IMPACT MODIFIED NYLON	



DIMENSIONS IN BRACKETS ARE METRIC [mm]

CAD FILENAME/LAYERS: G00239EN_PB_TM3S_11

PANDUIT CORP. TINLEY PARK, ILLINOIS

TM3S - TIE MOUNT

UNLESS OTHERWISE SPECIFIED, DIMENSIONAL TOLERANCES ARE:
 (.X) ±0.05 (1.3) (.XXX) ±0.010 (0.25)
 (.XX) ±0.02 (0.5) ANGLES ±5°

UNLESS OTHERWISE SPECIFIED, ALL DIMENSIONS ARE GIVEN IN INCHES, THIRD ANGLE PROJECTION.

DRAWN BY: AJV	MAT'L:	SCALE: NONE
DATE: 12/17/96	SEE TABLE	DWG NO.: G00239EN
CHK'D:		DWG SIZE: A

REV	DATE	BY	CHK	DESCRIPTION	ECN	R	CUST	SUP
11	4/16/07	DJSM		ADDED DECIMAL PLACE TO TABLE, REMOVED MATERIALS -69 AND -100	GB0239EN	11		
10	03/19/07	DJSM		ADDED TM3S2510, ADDED MATERIAL -39, CHANGED TOLERANCES	GB0239EN	10		