

Search:

Go

My Parts ( 0 items )  
Register  
Login

Product Name Cross-Ref Catalog Literature Industries Standards Contact Us About Us Investors Careers

Connectors Sockets I/O Connectors Cable Assemblies Fiber Optics Printed Circuit Products Automation and Electrical And More...

[Home](#) 22-03-2101 OR 0022032101

Refine Search

Product Family (Please choose this first)

---

Product Name

---

Product Series

Part Number Results Related Product Results

For Selected Results:

Add to My Parts Compare Compare All

Showing: 1 - 2 of 2 results.

Page: 1

20 per page

Switch Language

English

Need Assistance?


Contact Us  
Find a Distributor  
Order Samples  
Tech Library

**Part Number:** 0022032101 **Status:** Active

**Description:** 2.54mm (.100") Pitch KK® Wire-to-Board Header, Single Row, Vertical, 10 Circuits, PA Polyamide Nylon, Tin (Sn) Plating

---

**Documents:**  
*Note - Please disable browser pop-up blockers for documents on www.molex.com*  
[Drawing \(PDF\)](#) [Product Specification PS-10-07 \(PDF\)](#)  
[3D Model](#) [Packaging Specification \(PDF\)](#)  
[Related Catalog Page \(PDF\)](#)




**Part Number:** 0743232101 **Status:** Active

**Description:** MicroCross™ DVI Digital Single Channel, High Volume Plug Connector Sub-assembly, for PCB Mount, Gold (Au) Flash, Vertical, with key, 18 Circuits, Lead Free

---

**Documents:**  
*Note - Please disable browser pop-up blockers for documents on www.molex.com*  
[Drawing \(PDF\)](#) [Product Specification PS-74320-001 \(PDF\)](#)  
[Related Catalog Page \(PDF\)](#)



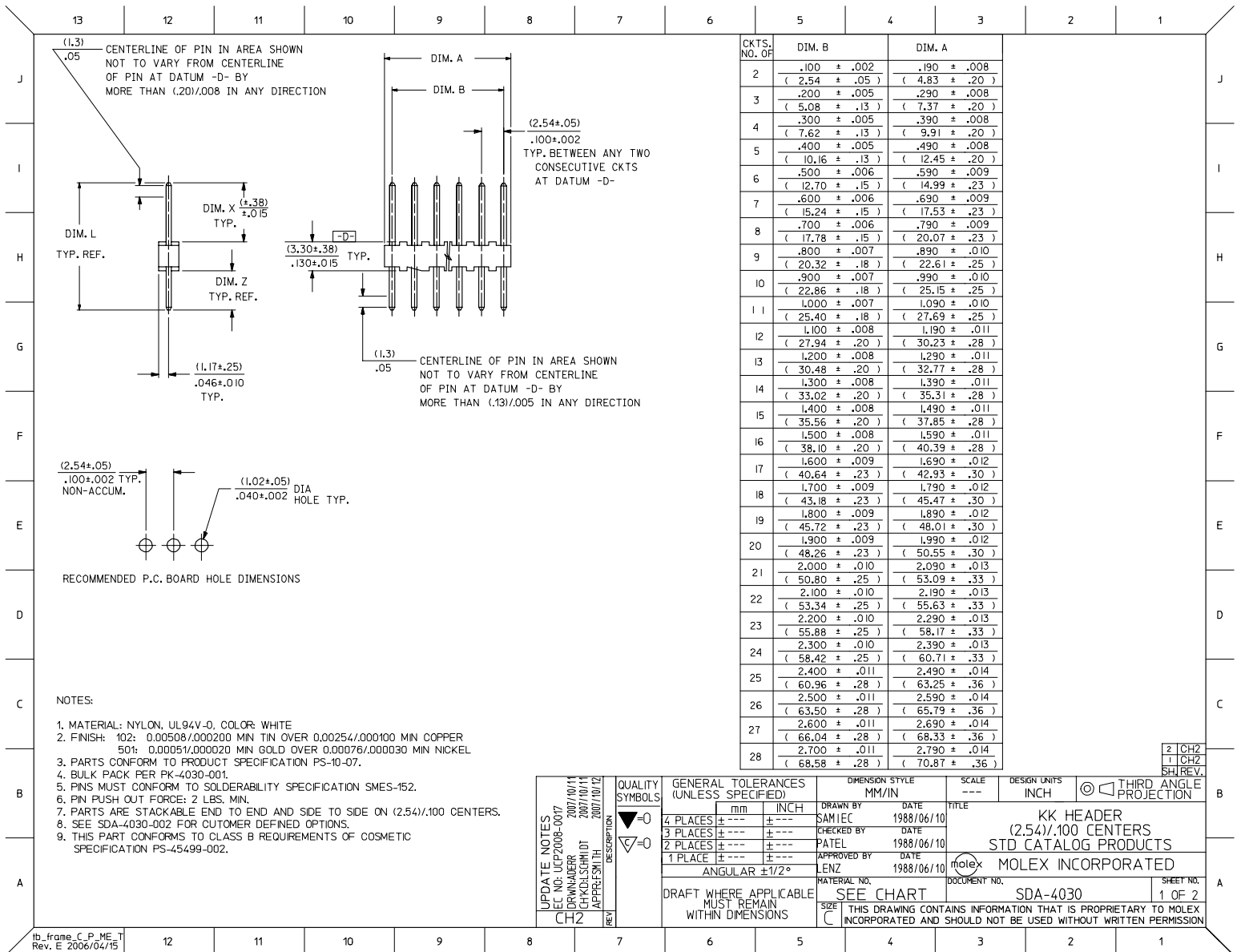
For Selected Results:

Compare Compare All

Showing: 1 - 2 of 2 results.

Page: 1

20 per page



CKTS. NO. OF	DIM. B	DIM. A
2	.100 ± .002 ( 2.54 ± .05 )	.190 ± .008 ( 4.83 ± .20 )
3	.200 ± .005 ( 5.08 ± .13 )	.290 ± .008 ( 7.37 ± .20 )
4	.300 ± .005 ( 7.62 ± .13 )	.390 ± .008 ( 9.91 ± .20 )
5	.400 ± .005 ( 10.16 ± .13 )	.490 ± .008 ( 12.45 ± .20 )
6	.500 ± .006 ( 12.70 ± .15 )	.590 ± .009 ( 14.99 ± .23 )
7	.600 ± .006 ( 15.24 ± .15 )	.690 ± .009 ( 17.53 ± .23 )
8	.700 ± .006 ( 17.78 ± .15 )	.790 ± .009 ( 20.07 ± .23 )
9	.800 ± .007 ( 20.32 ± .18 )	.890 ± .010 ( 22.61 ± .25 )
10	.900 ± .007 ( 22.86 ± .18 )	.990 ± .010 ( 25.15 ± .25 )
11	1.000 ± .007 ( 25.40 ± .18 )	1.090 ± .010 ( 27.69 ± .25 )
12	1.100 ± .008 ( 27.94 ± .20 )	1.190 ± .011 ( 30.23 ± .28 )
13	1.200 ± .008 ( 30.48 ± .20 )	1.290 ± .011 ( 32.77 ± .28 )
14	1.300 ± .008 ( 33.02 ± .20 )	1.390 ± .011 ( 35.31 ± .28 )
15	1.400 ± .008 ( 35.56 ± .20 )	1.490 ± .011 ( 37.85 ± .28 )
16	1.500 ± .008 ( 38.10 ± .20 )	1.590 ± .011 ( 40.39 ± .28 )
17	1.600 ± .009 ( 40.64 ± .23 )	1.690 ± .012 ( 42.93 ± .30 )
18	1.700 ± .009 ( 43.18 ± .23 )	1.790 ± .012 ( 45.47 ± .30 )
19	1.800 ± .009 ( 45.72 ± .23 )	1.890 ± .012 ( 48.01 ± .30 )
20	1.900 ± .009 ( 48.26 ± .23 )	1.990 ± .012 ( 50.55 ± .30 )
21	2.000 ± .010 ( 50.80 ± .25 )	2.090 ± .013 ( 53.09 ± .33 )
22	2.100 ± .010 ( 53.34 ± .25 )	2.190 ± .013 ( 55.63 ± .33 )
23	2.200 ± .010 ( 55.88 ± .25 )	2.290 ± .013 ( 58.17 ± .33 )
24	2.300 ± .010 ( 58.42 ± .25 )	2.390 ± .013 ( 60.71 ± .33 )
25	2.400 ± .011 ( 60.96 ± .28 )	2.490 ± .014 ( 63.25 ± .36 )
26	2.500 ± .011 ( 63.50 ± .28 )	2.590 ± .014 ( 65.79 ± .36 )
27	2.600 ± .011 ( 66.04 ± .28 )	2.690 ± .014 ( 68.33 ± .36 )
28	2.700 ± .011 ( 68.58 ± .28 )	2.790 ± .014 ( 70.87 ± .36 )

<b>UPDATE NOTES</b> DEC NO: UCP2008-0017 DRAWN BY: ZORWADER 2007/10/11 CHECKED BY: CHACKSCHMIDT 2007/10/11 APPROVED BY: JEFFREY SMITH 2007/10/12	<b>QUALITY SYMBOLS</b> ◻=0 ◻=0	<b>GENERAL TOLERANCES (UNLESS SPECIFIED)</b> <table border="1"> <tr><th></th><th>mm</th><th>INCH</th></tr> <tr><td>4 PLACES</td><td>± .005</td><td>± .0002</td></tr> <tr><td>3 PLACES</td><td>± .004</td><td>± .00015</td></tr> <tr><td>2 PLACES</td><td>± .003</td><td>± .0001</td></tr> <tr><td>1 PLACE</td><td>± .002</td><td>± .00005</td></tr> </table>		mm	INCH	4 PLACES	± .005	± .0002	3 PLACES	± .004	± .00015	2 PLACES	± .003	± .0001	1 PLACE	± .002	± .00005	<b>DIMENSION STYLE</b> MM/IN	<b>SCALE</b> ---	<b>DESIGN UNITS</b> INCH	<input checked="" type="checkbox"/> THIRD ANGLE PROJECTION
				mm	INCH																
4 PLACES	± .005	± .0002																			
3 PLACES	± .004	± .00015																			
2 PLACES	± .003	± .0001																			
1 PLACE	± .002	± .00005																			
<b>DRAFT WHERE APPLICABLE MUST REMAIN WITHIN DIMENSIONS</b>	<b>DRAWN BY</b> SAM IEC <b>CHECKED BY</b> PATEL <b>APPROVED BY</b> LENZ	<b>DATE</b> 1988/06/10 <b>DATE</b> 1988/06/10 <b>DATE</b> 1988/06/10	<b>TITLE</b> KK HEADER (2.54)/.100 CENTERS STD CATALOG PRODUCTS	<b>MATERIAL NO.</b> SEE CHART	<b>DOCUMENT NO.</b> SDA-4030	<b>SHEET NO.</b> 1 OF 2															

MoLEX INCORPORATED  
 THIS DRAWING CONTAINS INFORMATION THAT IS PROPRIETARY TO MOLEX INCORPORATED AND SHOULD NOT BE USED WITHOUT WRITTEN PERMISSION

COLUMN NO. 1						COLUMN NO. 2					
EDP NO.	ENG. NO.	NO OF DCTS	EDP NO.	ENG. NO.	NO OF DCTS	EDP NO.	ENG. NO.	NO OF DCTS	EDP NO.	ENG. NO.	NO OF DCTS
22-03-202	A-4030-02A(102)	2	22-10-202	A-4030-02A(50)	2						
22-03-203	A-4030-03A(102)	3	22-10-203	A-4030-03A(50)	3						
22-03-204	A-4030-04A(102)	4	22-10-204	A-4030-04A(50)	4						
22-03-205	A-4030-05A(102)	5	22-10-205	A-4030-05A(50)	5						
22-03-206	A-4030-06A(102)	6	22-10-206	A-4030-06A(50)	6						
22-03-207	A-4030-07A(102)	7	22-10-207	A-4030-07A(50)	7						
22-03-208	A-4030-08A(102)	8	22-10-208	A-4030-08A(50)	8						
22-03-209	A-4030-09A(102)	9	22-10-209	A-4030-09A(50)	9						
22-03-210	A-4030-10A(102)	10	22-10-210	A-4030-10A(50)	10						
22-03-211	A-4030-11A(102)	11	22-10-211	A-4030-11A(50)	11						
22-03-212	A-4030-12A(102)	12	22-10-212	A-4030-12A(50)	12						
22-03-213	A-4030-13A(102)	13	22-10-213	A-4030-13A(50)	13						
22-03-214	A-4030-14A(102)	14	22-10-214	A-4030-14A(50)	14						
22-03-215	A-4030-15A(102)	15	22-10-215	A-4030-15A(50)	15						
22-03-216	A-4030-16A(102)	16	22-10-216	A-4030-16A(50)	16						
22-03-217	A-4030-17A(102)	17	22-10-217	A-4030-17A(50)	17						
22-03-218	A-4030-18A(102)	18	22-10-218	A-4030-18A(50)	18						
22-03-219	A-4030-19A(102)	19	22-10-219	A-4030-19A(50)	19						
22-03-220	A-4030-20A(102)	20	22-10-220	A-4030-20A(50)	20						
22-03-221	A-4030-21A(102)	21	22-10-221	A-4030-21A(50)	21						
22-03-222	A-4030-22A(102)	22	22-10-222	A-4030-22A(50)	22						
22-03-223	A-4030-23A(102)	23	22-10-223	A-4030-23A(50)	23						
22-03-224	A-4030-24A(102)	24	22-10-224	A-4030-24A(50)	24						
22-03-225	A-4030-25A(102)	25	22-10-225	A-4030-25A(50)	25						
22-03-226	A-4030-26A(102)	26	22-10-226	A-4030-26A(50)	26						
22-03-227	A-4030-27A(102)	27	22-10-227	A-4030-27A(50)	27						
22-03-228	A-4030-28A(102)	28	22-10-228	A-4030-28A(50)	28						

UPDATE TITLE BLOCK EC NO: UCP2008-0017 DRAWN BY: 2007/10/11 CHZ CHECKED BY: 2007/10/11 APPR: SMITH 2007/10/11	QUALITY SYMBOLS	GENERAL TOLERANCES (UNLESS SPECIFIED)	DIMENSION STYLE	SCALE	DESIGN UNITS	THIRD ANGLE PROJECTION
	▽=0	m/m INCH	IN/MM	---	INCH	
	▽=0	4 PLACES ± --- ± ---	DRAWN BY: SAM IEC	DATE: 1993/07/15	TITLE: KK HEADER (2.54)/.100 CENTERS STD CATALOG PRODUCTS	
		3 PLACES ± --- ± ---	CHECKED BY: PATEL	DATE: 1993/07/15	MOLEX INCORPORATED	
	2 PLACES ± --- ± ---	APPROVED BY: LENZ	DATE: 1993/07/15	MATERIAL NO.	DOCUMENT NO.	SHEET NO.
	1 PLACE ± --- ± ---	ANGULAR ±1/2°	SEE CHART	SDA-4030		2 OF 2
		DRAFT WHERE APPLICABLE MUST REMAIN WITHIN DIMENSIONS	THIS DRAWING CONTAINS INFORMATION THAT IS PROPRIETARY TO MOLEX INCORPORATED AND SHOULD NOT BE USED WITHOUT WRITTEN PERMISSION			

ib\_frame\_C\_P\_ME\_T  
Rev. E 2006/04/15