

Switch Language

English

Need Assistance?

Contact Us
Find a Distributor
Order Samples
Tech Library

Printer-friendly page

Email this page

[Home](#) [Crimp Housings](#) [Datasheet](#)

Part Number: 0039012040

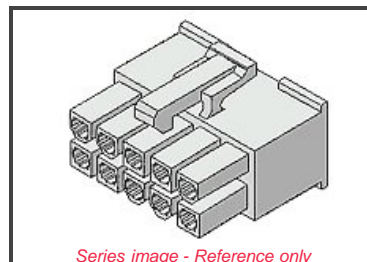
Status: Active **Overview:** [Mini-Fit Jr.™](#)

Description: 4.20mm (.165") Pitch Mini-Fit Jr.™ Receptacle Housing, Dual Row, UL 94V-2, 4 Circuits

Documents:

Note - Please disable browser pop-up blockers for documents on www.molex.com

- [Drawing \(PDF\)](#) [3D Model](#)
- [Test Summary \(PDF\)](#) [Related Catalog Page \(PDF\)](#)



Order Products:

[Check Distributor Inventory](#) [Add to My Parts](#)
[Request Samples](#)

Part Detail: [\(show all\)](#)

[General](#) [Physical](#) [Electrical](#) [Material Info](#)

General

Product Family	Crimp Housings
Series	5557
Overview	Mini-Fit Jr.™
Product Name	Mini-Fit Jr.™

Physical

Breakaway	No
Circuits (maximum)	4
Color - Resin	Natural
Flammability	94V-2
Gender	Female
Material - Resin	Nylon
Number of Rows	2
Packaging Type	Bag
Panel Mount	No
Pitch - Mating Interface (in)	0.165 In
Pitch - Mating Interface (mm)	4.20 mm
Pitch - Term. Interface (in)	0.165 In
Pitch - Term. Interface (mm)	4.20 mm
Polarized to Mating Part	Yes
Stackable	No
Temperature Range - Operating	-40°C to +105°C

Electrical

CSA	LR19980
TUV	R75142
UL	E29179

Material Info

Old Part Number	5557-04R
-----------------	----------

EU RoHS **China RoHS**
ELV and RoHS Compliant



Need more information on product compliance?

Email productcompliance@molex.com

Please visit the [Contact Us](#) section for any non-product compliance questions.

Search Parts in this Series

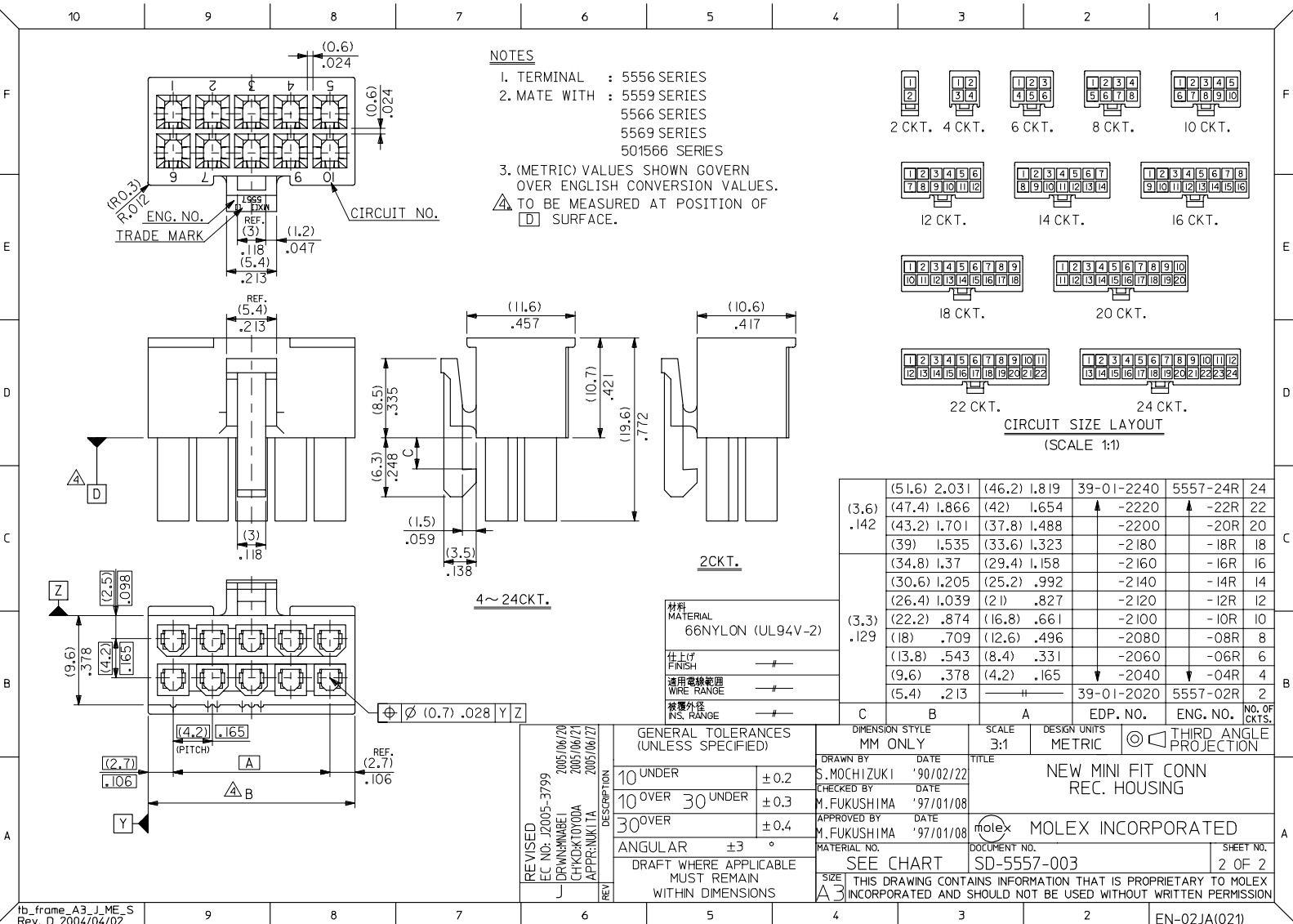
[5557 Series](#)

Mates With

[5559d](#), [5566vw](#), [5566vwo](#), [5569rdf](#),
[5569rdp](#), [43810a](#), [43810b](#), [43810c](#),
[43810d](#), [44068a](#), [44068b](#), [44068c](#),
[44068d](#), [44281](#), [44472dw](#), [44472dwo](#),
[87427](#), [87427r](#), [87427rf](#), [42404](#),
[44474](#), [42440](#), [43879](#), [42475](#)

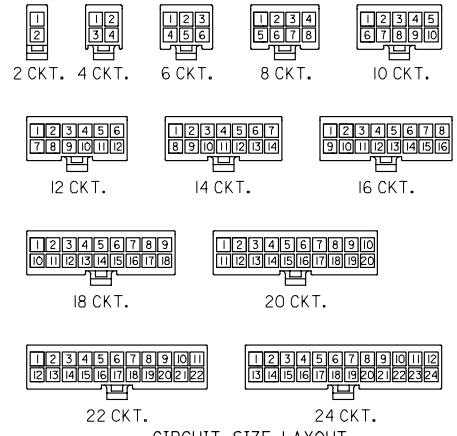
Use With

[5556](#), [44476](#), [44485](#), [41995](#)



NOTES

1. TERMINAL : 5556 SERIES
2. MATE WITH : 5559 SERIES
5566 SERIES
5569 SERIES
501566 SERIES
3. (METRIC) VALUES SHOWN GOVERN OVER ENGLISH CONVERSION VALUES.
⚠️ TO BE MEASURED AT POSITION OF \square SURFACE.



CIRCUIT SIZE LAYOUT
(SCALE 1:1)

(51.6)	2.031	(46.2)	1.819	39-01-2240	5557-24R	24
(3.6)	(47.4)	1.866	(42)	1.654	-2220	-22R
.142	(43.2)	1.701	(37.8)	1.488	-2200	-20R
	(39)	1.535	(33.6)	1.323	-2180	-18R
	(34.8)	1.37	(29.4)	1.158	-2160	-16R
	(30.6)	1.205	(25.2)	.992	-2140	-14R
	(26.4)	1.039	(21)	.827	-2120	-12R
(3.3)	(22.2)	.874	(16.8)	.661	-2100	-10R
.129	(18)	.709	(12.6)	.496	-2080	-08R
	(13.8)	.543	(8.4)	.331	-2060	-06R
	(9.6)	.378	(4.2)	.165	-2040	-04R
	(5.4)	.213			39-01-2020	5557-02R
						2

材料	66NYLON (UL94V-2)
仕上り	FINISH
適用電線範囲	WIRE RANGE
被覆外径	INS. RANGE

REVISED EC NO. J2005-3799 DRAWN NABEI 2005/06/20 CHKD KTOYODA 2005/06/21 APPR. NUKITA 2005/06/27	GENERAL TOLERANCES (UNLESS SPECIFIED)		DIMENSION STYLE	SCALE	DESIGN UNITS	NEW MINI FIT CONN REC. HOUSING
	10 UNDER	±0.2	MM ONLY	3:1	METRIC	
	10 OVER 30 UNDER	±0.3	DRAWN BY	DATE		
	30 OVER	±0.4	S. MOCHIZUKI	'90/02/22		
	ANGULAR	±3°	CHECKED BY	DATE		
		M. FUKUSHIMA	'97/01/08		Molex MOLEX INCORPORATED	
DRAFT WHERE APPLICABLE MUST REMAIN WITHIN DIMENSIONS		APPROVED BY	DATE			
		M. FUKUSHIMA	'97/01/08			
		MATERIAL NO.	SEE CHART	DOCUMENT NO.	SHEET NO.	
				SD-5557-003	2 OF 2	
			THIS DRAWING CONTAINS INFORMATION THAT IS PROPRIETARY TO MOLEX INCORPORATED AND SHOULD NOT BE USED WITHOUT WRITTEN PERMISSION			