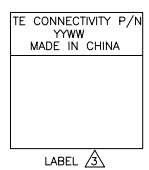


PIN ASSIGNMENT :

P1	1	2	3	6	7	8	9	10	11	14	15	16	17	18	19	23	24	22	C1	C5	C2	C5	C3	C5	C4	Shell
	Pair.1			Pair.			Pair.2						Pair.3			Pair.4			Drain (Pair.4)	Coax. Red Coax	Coax. Red Coax	Coax. Gray Coax	Coax. Gray Coax	Coax. Blue Coax	Coax. Blue Coax	Outer Braid
P2	1	2	3	6	7	8	9	10	11	14	15	16	17	18	19	23	24	22	C1	C5	C2	C5	C3	C5	C4	Shell

- NOTES :
- CABLE SHALL BE TESTED WITH AUTOMATED TEST EQUIPMENT FOR THE FOLLOWING:
 - CONNECTION RESISTANCE SHALL NOT EXCEED 1.8 OHMS.
 - INSULATION RESISTANCE 1000 MEGOHMS, MIN.
 - HIPOT-300 VOLTS AT 0.01 SEC.
 - CABLE ASSEMBLY MUST PASS DVI 1.0 SPECIFICATION.
 - CABLE LABEL TO BE APPLIED AS SHOWN.
 - 100% DISPLAY-SCREEN FUNCTIONAL TESTING.
 - PRODUCT AND PROCESSING MUST MEET REQUIREMENTS OF TEC-138-702.



LENGTH(L)	CUSTOMER P/N	PART NO.
3000±80		1653929-3
2000±60		1653929-2
1000±30		1653929-1

QTY	DESCRIPTION	ITEM			
14	UL TAPE BLK (9mm)	14			
13	Heat Shrink Tubing, OD: 1.5mm, Color: Black.	13			
12	Heat Shrink Tubing, OD: 0.7mm, Color: Black.	12			
11	PVC, Shore A 95±3, Color: White (WH01).	11			
10	Label, Size: 25.0*50.0, White: 25.0*13.0.	10			
9	DVI #4-40 3*45mm Thumbscrew.	9			
8	Copper Foil, W:8mm.	8			
7	PVC, Shore A 90±3, Color: White (WH01).	7			
6	Heat Shrink Tubing, OD: 18.0mm, Color: Black.	6			
5	Heat Shrink Tubing, OD: 2.5mm, Color: Black.	5			
4	Heat Shrink Tubing, OD: 1.0mm, Color: Black.	4			
3	Metal Can For DVI Connector.	3			
2	DVI-I Connector, Gold 30U Plated	2			
1	UL20276 [30AWG*3Coax.+(28AWG*1P+Drain+Al/Mylar)*4+28AWG*1P+28AWG*6C]+Al/Mylar+Braid, Black(BK01)	1			
-3	-2	-1	U/M	DESCRIPTION	ITEM

THIS DRAWING IS A CONTROLLED DOCUMENT.

DIMENSIONS: mm	TOLERANCES UNLESS OTHERWISE SPECIFIED:	DATE: 22JAN03	BY: JUREY LIU
0 PLC	± .1	CHK: MONTGOMERY, JOHN D	15JUN04
1 PLC	± .15	APP'D: MONTGOMERY, JOHN D	15JUN04
2 PLC	± .2	NAME: MONTGOMERY, JOHN D	
3 PLC	± .3	PRODUCT SPEC:	
4 PLC	± .5	APPLICATION SPEC:	
ANGLES	± .5	WEIGHT:	
FINISH:		SIZE: A2	QTY: 00779

MATERIAL: - FINISH: -

TE Connectivity
DVI-I TO DVI-I CABLE ASSEMBLY

SCALE: N.T.S. SHEET 1 of 1 REV: G1