

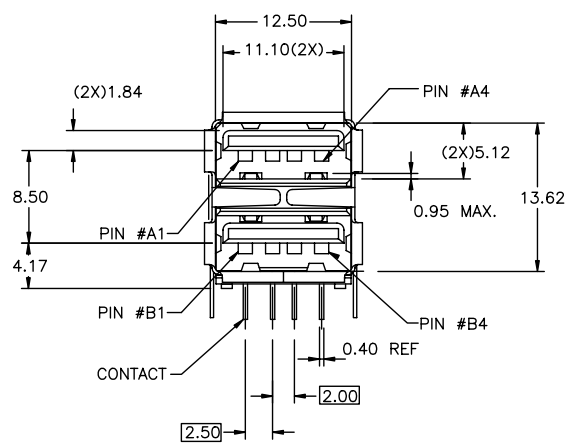
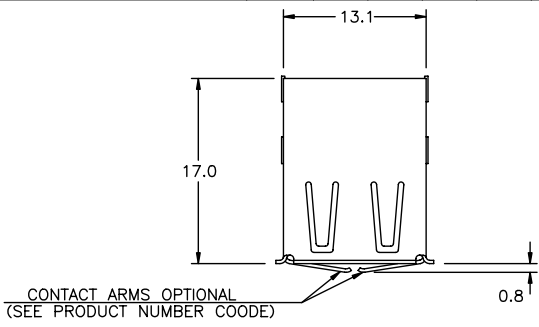


Tous droits strictement réservés. Reproduction ou communication à des tiers interdite sous quelque forme que ce soit sans autorisation écrite du propriétaire. Propriété de © BERG ELECTRONICS. Droits de reproduction BERG ELECTRONICS INC.

All rights strictly reserved. Reproduction or issue to third parties in any form whatever is not permitted without written authority from the proprietor. Property of © BERG ELECTRONICS Copyright BERG ELECTRONICS INC.

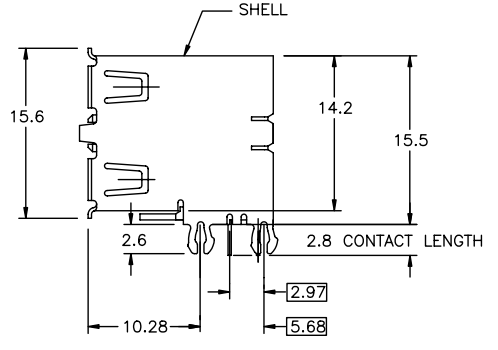
Downloaded from [Elcodis.com](http://Elcodis.com) electronic components distributor

1 | 2 | 3 | 4



ASSEMBLY WITHOUT BACK SHIELD  
72309-XX3XX SHOWN

- (CONTINUED)
- 6. FOR LEAD FREE P/N, A LEAD FREE LABEL WILL APPEAR AT PACKING.
  - 7. FOR LEAD FREE P/N, THE HOUSING WILL WITHSTAND EXPOSURE TO 260°C PEAK TEMPERATURE FOR 40 SECONDS IN A CONVECTION, INFRA-RED OR VAPOR PHASE REFLOW OVEN.
  - 8. FOR LEAD FREE P/N, THE PRODUCT MEET EUROPEAN UNION DIRECTIVES AND OTHER COUNTRY REGULATION AS DESCRIBED IN GS-22-008



mat'l. code				tolerances unless otherwise specified		CUSTOMER COPY		FCJ	
ltr	ecn no	dr	date	linear	.X ±.30	projection	www.fciconnect.com		
AH					.XX ±.20		title		
				angles	.XXX ±.10		UNIV. SERIAL BUS		
				dr	0° ±3'	← mm →	DOUBLE DECK RECEPTACLE		
				enr	PETER PAM 12/10/97	scale	product family	USB	code
				chr	R Y LIU 12/10/97	2 : 1	size	dwg no	—
				appd	JENN TSAO 12/10/97		A4	72309	sheet
sheet index	revision sheet								2 of 4

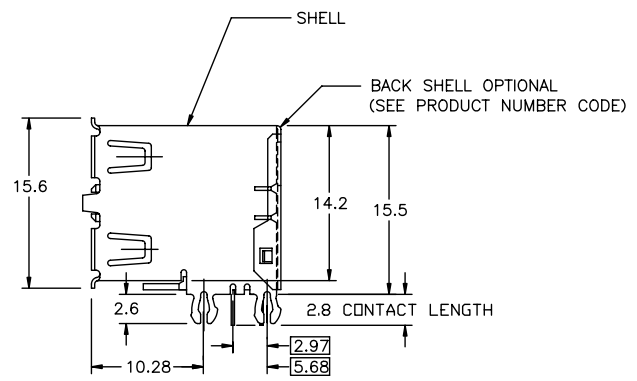
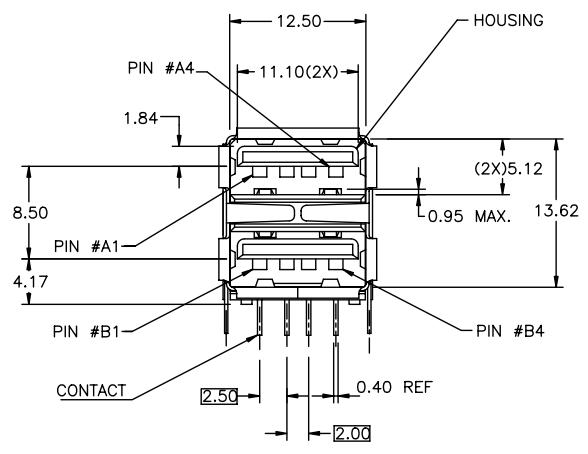
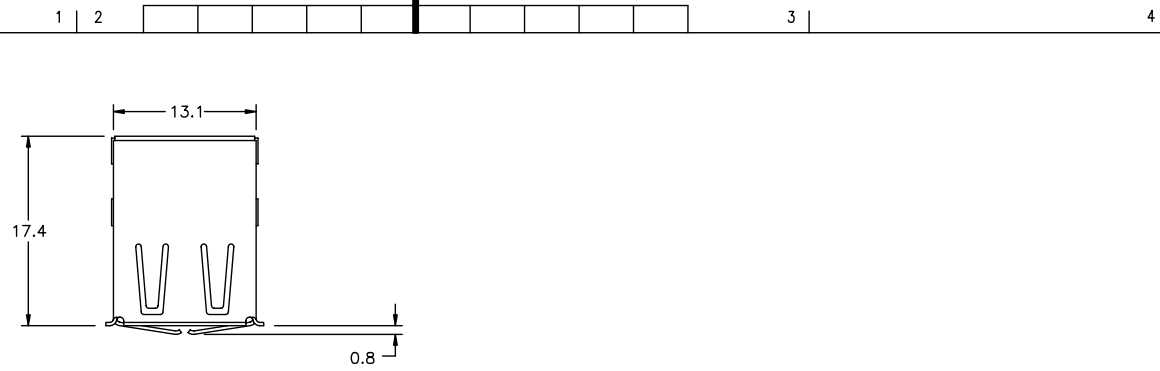
form no. 7530-001-103

1 | 2

PDM: Rev:AH 3 STATUS Released 2526 cage code 2526 4 28, 2010

Tous droits strictement réservés. Reproduction ou communication à des tiers interdite sous quelque forme que ce soit sans autorisation écrite du propriétaire. Propriété de © BERG ELECTRONICS. Droits de reproduction BERG ELECTRONICS INC.

All rights strictly reserved. Reproduction or issue to third parties in any form whatever is not permitted without written authority from the proprietor. Property of © BERG ELECTRONICS Copyright BERG ELECTRONICS INC.



ASSEMBLY WITH BACK SHIELD  
72309 - XX4XX SHOWN

mat'l. code				tolerances unless otherwise specified		CUSTOMER COPY		FCJ www.fcjconnect.com	
ltr	ecr no	dr	date	linear	.X ±.30	projection	title		
AH					.XX ±.20		UNIV. SERIAL BUS		
				angles	.XXX ±.10		DOUBLE DECK RECEPTACLE		
				dr	0° ±3'	mm	product family	code	
				enr	PETER PAM 12/01/97	scale	USB	—	
				chr	R Y LIU 12/10/97	2 : 1	size	—	
				appd	JENN TSAO 12/10/97	A4	dwg no	—	
sheet index	revision sheet						72309	3 of 4	

Tous droits strictement réservés. Reproduction ou communication à des tiers interdite sous quelque forme que ce soit sans autorisation écrite du propriétaire. Propriété de © BERG ELECTRONICS INC. Droits de reproduction BERG ELECTRONICS INC.

All rights strictly reserved. Reproduction or issue to third parties in any form whatever is not permitted without written authority from the proprietor. Property of © BERG ELECTRONICS INC. Copyright BERG ELECTRONICS INC.

PRODUCT NUMBER CODE

72309 - X X X X X P S LF

BASE PRODUCT NUMBER

- 0 - WHITE + NICKEL & TIN LEAD PLATING
- 1 - BLACK + NICKEL & TIN LEAD PLATING
- 2 - WHITE + NICKEL PLATING ONLY
- 3 - BLACK + NICKEL PLATING ONLY
- 4 - WHITE + NICKEL PLATING ONLY + LCP HSG
- 5 - BLACK + NICKEL PLATING ONLY + LCP HSG
- 6 - BLACK + NICKEL & TIN LEAD PLATING + LCP HSG
- 7 - BLACK + NICKEL & BRIGHT TIN PLATING
- 8 - WHITE + NICKEL & BRIGHT TIN PLATING
- 9 - BLACK + NICKEL & BRIGHT TIN PLATING + LCP HSG
- A - BLACK + NICKEL & MATTE TIN PLATING + LCP HSG
- S - BLACK + NICKEL PLATING ONLY + LCP HSG

SHELL PLATING OPTION

- 0 - BARREL-PLATING
- 1 - PRE-PLATING

SHELL OPTIONS

- 1 - NO BACK SHIELD, NO ARMS, FRONT GROUNDING ARMS
- 2 - BACK SHIELD, NO FRONT GROUNDING ARMS
- 3 - NO BACK SHIELD, FRONT GROUNDING ARMS
- 4 - BACK SHIELD, FRONT GROUNDING ARMS

TERMINAL OPTION

- 0 - 50u" Ni UNDERPLATE, 30u" GXT CONTACT AREA, 100u" TIN/LEAD TAIL AREA  
2.80mm TAIL LENGTH
- 2 - 50u" Ni UNDERPLATE, 30u" GOLD CONTACT AREA, 100u" TIN/LEAD TAIL AREA  
2.80mm TAIL LENGTH
- 3 - 50u" Ni UNDERPLATE, 30u" GOLD CONTACT AREA, 100u" MATTE TIN TAIL AREA  
2.80mm TAIL LENGTH
- 4 - 50u" Ni UNDERPLATE, 30u" GXT CONTACT AREA, 100u" MATTE TIN TAIL AREA  
2.80mm TAIL LENGTH
- 5 - 50u" Ni UNDERPLATE, 30u" GOLD CONTACT AREA, 100u" MATTE TIN TAIL AREA  
3.94mm TAIL LENGTH

PACKAGING OPTIONS

- B - TUBES
- R - TAPE & REEL

WITH DATE CODE

ONLY FOR PANASONIC

LEAD FREE MARK

LEAD FREE CONVERSION RULES -  
HOUSING COLOR AND SHELL PLATING OPTION: 0 TO 8, 1 TO 7, 6 TO 9  
TERMINAL PLATING OPTION: 0 TO 4, 2 TO 3  
SPECIAL SHELL MATERIAL FOR 12K CYCLES DURABILITY,  
PART NUMBER: 72309-S033XPLF - S034XPLF

NOTE:

AVAILABLE P/N'S IN FCI NOW FOLLOWED:

- 72309-0010X/8014XLF
- 72309-0012X/8013XLF
- 72309-0020X/8024XLF
- 72309-0022X/8023XLF
- 72309-0030X/8034XLF
- 72309-0032X/8033XLF
- 72309-0040X/8044XLF
- 72309-0042X/8043XLF
- 72309-1010X/7014XLF
- 72309-1012X/7013XLF
- 72309-1020X/7024XLF
- 72309-1022X/7023XLF
- 72309-1030X/7034XLF
- 72309-1032X/7033XLF
- 72309-1040X/7044XLF
- 72309-1042X/7043XLF
- 72309-0110X/8114XLF
- 72309-0112X/8113XLF
- 72309-0120X/8124XLF
- 72309-0122X/8123XLF
- 72309-0130X/8134XLF
- 72309-0132X/8133XLF
- 72309-0140X/8144XLF
- 72309-0142X/8143XLF
- 72309-1110X/7114XLF
- 72309-1112X/7113XLF
- 72309-1120X/7124XLF
- 72309-1122X/7123XLF
- 72309-1130X/7134XLF
- 72309-1132X/7133XLF
- 72309-1140X/7144XLF
- 72309-1142X/7143XLF
- 72309-2010X/2014XLF
- 72309-2012X/2013XLF
- 72309-2020X/2024XLF
- 72309-2022X/2023XLF
- 72309-2030X/2034XLF
- 72309-2032X/2033XLF
- 72309-2040X/2044XLF
- 72309-2042X/2043XLF
- 72309-3010X/3014XLF
- 72309-3012X/3013XLF
- 72309-3020X/3024XLF
- 72309-3022X/3023XLF
- 72309-3030X/3034XLF
- 72309-3032X/3033XLF
- 72309-3040X/3044XLF
- 72309-3042X/3043XLF
- 72309-4040X/4044XLF
- 72309-5012X/5013XLF
- 72309-5030X/5034XLF
- 72309-5040X/5044XLF/5044XSLF
- 72309-6220X/6224XLF
- 72309-A034XLF
- 72309-S015XPLF
- 72309-S045XPLF
- 72309-S033XPLF
- 72309-S034XPLF

mat'l. code		tolerances unless otherwise specified		CUSTOMER COPY		FCI www.fciconnect.com	
ltr	ecn no	dr	date	linear	projection	title UNIV. SERIAL BUS DOUBLE DECK RECEPTACLE	
AH				angles		product family USB	code -
				dr	FUSSELMAN 5/10/96	size	sheet 4 of 4
				enr	J.DAVID 5/10/96	scale	
				chr	J.DAVID 6/29/96	A4	72309
				appd	J.DAVID 6/29/96		
sheet index	revision sheet						