


English 日本語 한국어 简体中文

Search: Go My Parts (0 items)
[Register](#)
[Login](#)

Product Name	Cross-Ref	Catalog	Literature	Industries	Standards	Contact Us	About Us	Investors	Careers
Connectors	Sockets	I/O Connectors	Cable Assemblies	Fiber Optics	Printed Circuit Products	Automation and Electrical	And More...		

[Switch Language](#)[Need Assistance?](#)[Contact Us](#)
[Find a Distributor](#)
[Order Samples](#)
[Tech Library](#)[Printer-friendly page](#)[Email this page](#)[Home](#) [Quick Disconnects](#) [Datasheet](#)**Part Number: 0190020024****Status: Active****Description:** Avikrimp™ Fully Insulated Quick Disconnect, Female, for 14-16 AWG Wire, Box**Documents:***Note - Please disable browser pop-up blockers for documents on www.molex.com*[Drawing \(PDF\)](#)[Related Catalog Page \(PDF\)](#)**Order Products:**[Check Distributor Inventory](#)[Add to My Parts](#)[Request Samples](#)**Part Detail:** [\(show all\)](#)[General](#) [Physical](#) [Electrical](#) [Material Info](#)**General**

Product Family	Quick Disconnects
Series	19002
Product Name	Avikrimp™
Type	Quick Disconnect

Physical

Barrel Type	Closed
Flammability	94V-2
Gender	Female
Insulation	Nylon (PA)
Lock to Mating Part	None
Material - Metal	Brass
Orientation	Straight
Packaging Type	Bag
Polarized to Mating Part	No
Tab Thickness	0.81mm (.032")
Tab Width	6.35mm (.250")
Temperature Range - Operating	-40°C to +105°C
Wire Insulation Diameter	3.94mm (.155") max.
Wire Size AWG	14
Wire Size AWG	16
Wire Size mm²	1.30 - 2.00

Electrical

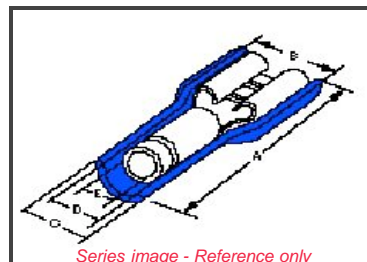
CSA	LR18689
UL	E79133
Voltage - Maximum	300V

Material Info

Old Part Number	BB-5263
-----------------	---------

Reference - Drawing Numbers

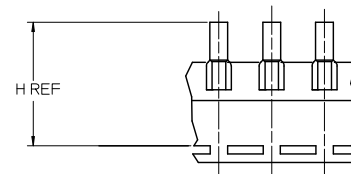
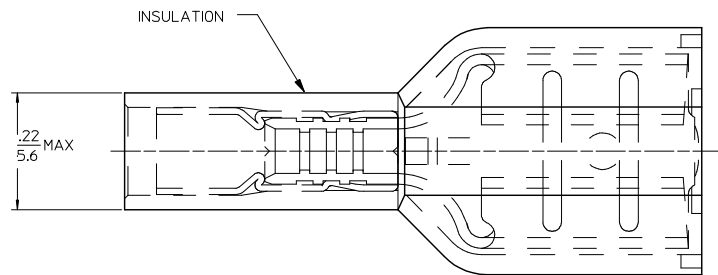
Sales Drawing	SD-19002-004
---------------	--------------

*Series image - Reference only***EU RoHS****ELV and RoHS Compliant****China RoHS****Need more information on product compliance?**Email productcompliance@molex.comPlease visit the [Contact Us](#) section for any non-product compliance questions.**Search Parts in this Series**[19002 Series](#)**Use With**[19001-0006](#), [19001-0007](#)**Application Tooling***Tooling specifications and manuals are found by selecting the products below. Crimp Height Specifications are then contained in the Application Tooling Specification document.***Global**

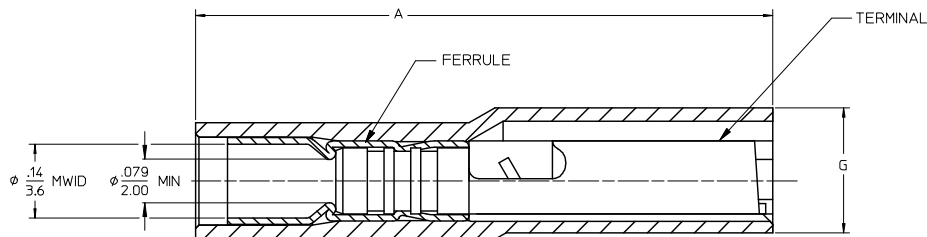
Description	Product #
Hand Crimp Tool	0640011100
Crimp Head for the AT-200™ Pneumatic Hand Tool	0640051100

	13	12	11	10	9	8	7	6	5	4	3	2	1				
J	MATERIAL NUMBER LOOSE PCS	ENGINEERING NUMBER LOOSE PCS	MATERIAL NUMBER ON STRIP	ENGINEERING NUMBER ON STRIP	MATERIAL NUMBER ON TAPE	ENGINEERING NUMBER ON TAPE	MATERIAL NUMBER REVERSE WOUND	ENGINEERING NUMBER REVERSE WOUND	CURL HEIGHT "C" REF	ACCEPTS TAB SIZE	STOCK THICKNESS	"A" MAX	"B" MAX	"F" REF	"G" MAX	"H" REF	J
	190020024	BB-5263	190020027	BB-5263Z	190020025	BB-5263T	190020026	BB-5263TR	.028/0.71	.250x.032 (6.35x0.81)	.016/0.41	.89/22.6	.38/9.7	.16/4.1	.20/5.1	1.425/36.20	
	190020040	BB-5287	190020041	BB-5287Z	190020048	BB-5287T	---	---	.017/0.43	.205x.020 (5.21x0.51)	.016/0.41	.80/20.3	.32/8.1	.16/4.1	.22/5.6	1.415/35.94	
	190020042	BB-5289	190020061	BB-5289Z	190020043	BB-5289T	---	---	.028/0.71	.205x.032 (5.21x0.81)	.016/0.41	.80/20.3	.32/8.1	.16/4.1	.22/5.6	1.415/35.94	
	190020028	BB-5269	190020030	BB-5269Z	190020029	BB-5269T	---	---	.017/0.43	.187x.020 (4.75x0.51)	.016/0.41	.80/20.3	.32/8.1	.16/4.1	.22/5.6	1.415/35.94	
	190020031	BB-5273	190020033	BB-5273Z	190020032	BB-5273T	---	---	.028/0.71	.187x.032 (4.75x0.81)	.016/0.41	.80/20.3	.32/8.1	.16/4.1	.22/5.6	1.415/35.94	
I	190020034	BB-5277	190020036	BB-5277Z	190020035	BB-5277T	---	---	.016/0.41	.110x.020 (2.79x0.51)	.012/0.31	.80/20.3	.23/5.8	.13/3.3	.22/5.6	1.395/35.43	
	190020037	BB-5281	190020039	BB-5281Z	190020038	BB-5281T	---	---	.028/0.71	.110x.032 (2.79x0.81)	.012/0.31	.80/20.3	.23/5.8	.13/3.3	.22/5.6	1.395/35.43	

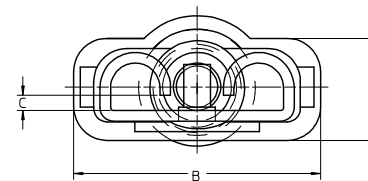
(E1)



PARTS ON TAPE



FOR CLARITY, TERMINAL COMPONENT IS NOT SECTIONED



SALES DRAWING

NOTES:

- MATERIAL: TERMINAL BRASS
TERMINAL PLATING: ELECTRO TIN
FERRULE: BRASS
FERRULE PLATING: ELECTRO TIN
INSULATION: NYLON 94V2 COLOR BLUE.
- MWD = MAXIMUM WIRE INSULATION DIAMETER
- ASSEMBLY IS ROHS COMPLIANT.

CORRECT METRIC DIM. WAS 12.7
EC NO: WNA2009-0146
DRAWN: JENCINAS 2008/09/01
CHECKED: 2008/09/09
APPR: JMCNEIL 2008/09/10
REV

QUALITY
SYMBOLS
▽=0
▽=0

GENERAL TOLERANCES
(UNLESS SPECIFIED)

	mm	INCH
4 PLACES	±.005	±.0005
3 PLACES	±.01	±.001
2 PLACES	±.02	±.002
1 PLACE	±.05	±.005
ANGULAR ±1/2°		

DRAFT WHERE APPLICABLE
MUST REMAIN
WITHIN DIMENSIONS

DIMENSION STYLE
IN/MM

DRAWN BY	DATE
BENDERLE	2005/04/11
CHECKED BY	DATE
R DEROSS	2005/04/11
APPROVED BY	DATE
R DEROSS	2005/04/11

MATERIAL NO.
SEE CHART

SCALE
4:1

INCH

THIRD ANGLE
PROJECTION

TITLE

AVIKRIMP FEMALE FIQD
16-14 AWG

MOLEX INCORPORATED

DOCUMENT NO.
SD-19002-004SHEET NO.
1 OF 1

THIS DRAWING CONTAINS INFORMATION THAT IS PROPRIETARY TO MOLEX INCORPORATED AND SHOULD NOT BE USED WITHOUT WRITTEN PERMISSION