

Series image - Reference only

EU RoHS ELV and RoHS Compliant	China RoHS
-----------------------------------	------------

**Search Parts in this Series**

19005 Series

**Use With**

19004-0001, 19004-0004

**Application Tooling**

**Global**

**Description**

Hand Crimp Tool

Crimp Head for the AT-200™ Pneumatic Hand Tool

**Product #**

0640014700

0640054700

**Part Number:** **0190050001**

**Status:** **Active**

**Description:** InsulKrimp™ Fully Insulated Coupler, Female, for 18-22 AWG Wire, Box

**Documents:**

- [Drawing \(PDF\)](#)
- [Product Specification PS-19902-008 \(PDF\)](#)
- [Related Catalog Page \(PDF\)](#)

## Order Products:

- [Check Distributor Inventory](#)
- [Request Samples](#)

### Part Detail: [\(show all\)](#)

○ **General**

○ **Physical**

○ **Electrical**

○ **Material Info**

○ **Reference - Drawing Numbers**

#### General

Product Family	Quick Disconnects
Series	<u>19005</u>
Product Name	InsulKrimp™
Type	Quick Disconnect

#### Physical

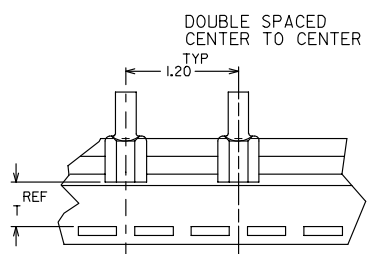
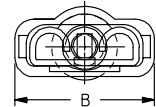
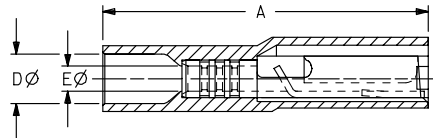
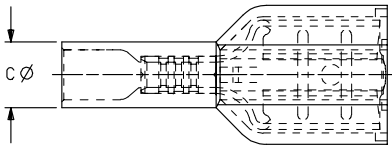
Barrel Type	Closed
Color - Resin	Natural
Flammability	94 V0
Gender	Female
Insulation	Nylon (PA)
Lock to Mating Part	None
Material - Metal	Brass
Material - Resin	Nylon
Orientation	Straight
Packaging Type	Box
Polarized to Mating Part	No
Tab Thickness	0.81mm (.032")
Tab Width	6.35mm (.250")
Temperature Range - Operating	-65°C to +105°C
Wire Insulation Diameter	4.19mm (.165") max.
Wire Size AWG	18
Wire Size AWG	20
Wire Size AWG	22
Wire Size mm <sup>2</sup>	0.35 - 0.80

#### Electrical

CSA	LR18689
UL	E79133
Voltage - Maximum	600V

10	9	8	7	6	5	4	3	2	19005				
MATERIAL NO. LOOSE PC	ENGINEERING NO. LOOSE PC	MATERIAL NO. ON TAPE	ENGINEERING NO. ON TAPE	WIRE SIZE	ACCEPTS TAB SIZE	COLOR	STOCK THICKNESS	A MAX	B MAX	C MAX	D MWID	E MIN	T REF
190050001	AA-2261	190050004	AA-2261T	22-18	.250x.032	RED	.018	.89	.38	.23	.165	.083	.520
190050005	BB-2263	190050009	BB-2263T	16-14	.250x.032	BLUE	.018	.89	.38	.23	.165	.083	.520
190050010	C-2265	190050015	C-2265T	12-10	.250x.032	YELLOW	.018	1.04	.38	.34	.275	.145	.508

(B)



TAPE MOUNTING DETAIL

- NOTES:
1. TERMINAL MATERIAL: BRASS
  2. TERMINAL FINISH: TIN PLATED
  3. INSULATION MATERIAL: MOLDED NYLON
  4. MWID = MAXIMUM WIRE INSULATION DIAMETER
  5. ASSEMBLY IS ROHS COMPLIANT.

REDRAWN & REVISED EC NO: ETC2007-0281 D: DRINHILLE 2007/07/06 CHKD: MACNEIL 2007/02/06 APPR: MACNEIL 2007/02/06	QUALITY SYMBOLS	GENERAL TOLERANCES (UNLESS SPECIFIED)	DIMENSION STYLE	SCALE	DESIGN UNITS	THIRD ANGLE PROJECTION															
	$\nabla=0$ $\sphericalangle=0$	<table border="1"> <thead> <tr> <th></th> <th>mm</th> <th>INCH</th> </tr> </thead> <tbody> <tr> <td>4 PLACES</td> <td>± .---</td> <td>± .---</td> </tr> <tr> <td>3 PLACES</td> <td>± .---</td> <td>± .005</td> </tr> <tr> <td>2 PLACES</td> <td>± .---</td> <td>± .01</td> </tr> <tr> <td>1 PLACE</td> <td>± .---</td> <td>± .---</td> </tr> </tbody> </table>		mm	INCH	4 PLACES	± .---	± .---	3 PLACES	± .---	± .005	2 PLACES	± .---	± .01	1 PLACE	± .---	± .---	INCH ONLY	---	INCH	
		mm	INCH																		
	4 PLACES	± .---	± .---																		
3 PLACES	± .---	± .005																			
2 PLACES	± .---	± .01																			
1 PLACE	± .---	± .---																			
DRAFT WHERE APPLICABLE MUST REMAIN WITHIN DIMENSIONS	<table border="1"> <thead> <tr> <th>DRAWN BY</th> <th>DATE</th> </tr> </thead> <tbody> <tr> <td>EMF</td> <td>1993/06/25</td> </tr> <tr> <td>CHECKED BY</td> <td>---</td> </tr> <tr> <td>APPROVED BY</td> <td>---</td> </tr> </tbody> </table>	DRAWN BY	DATE	EMF	1993/06/25	CHECKED BY	---	APPROVED BY	---	TITLE	FULLY INSULATED FEMALE COUPLER										
DRAWN BY	DATE																				
EMF	1993/06/25																				
CHECKED BY	---																				
APPROVED BY	---																				
REV	DESCRIPTION	MATERIAL NO.	DOCUMENT NO.	MOLEX INCORPORATED																	
		SEE CHART	SD-19005-001	STEEL NO. 1 OF 1																	
		THIS DRAWING CONTAINS INFORMATION THAT IS PROPRIETARY TO MOLEX INCORPORATED AND SHOULD NOT BE USED WITHOUT WRITTEN PERMISSION																			