

Series image - Reference only

EU RoHS	China RoHS
ELV and RoHS Compliant	

**Search Parts in this Series**

[19202 Series](#)

**Application Tooling**

**Global**

**Description**

Hand Crimp Tool

Crimp Head for the AT-200™ Pneumatic Hand Tool

**Product #**

[0640012700](#)

[0640052700](#)

**Part Number:** **0192020013**

**Status:** **Active**

**Description:** Nylakrimp™ Butt Splice for 18-22 AWG Wire

**Documents:**

- [Drawing \(PDF\)](#)
- [Related Catalog Page \(PDF\)](#)

**Order Products:**

- [Check Distributor Inventory](#)
- [Request Samples](#)

○

**Part Detail: [\(show all\)](#)**○ **General**○ **Physical**○ **Electrical**○ **Material Info**○ **Reference - Drawing Numbers****General**

Product Family	Splices
Series	<u>19202</u>
Mil-Spec	N/A
Product Name	Butt
Product Name	NylaKrimp™

**Physical**

Barrel Type	Closed - Brazed
Breakaway	No
Flammability	94 V0
Insulation	Nylon (PA)
Number of Rows	0
Packaging Type	Box
Temperature Range - Operating	-55°C to +105°C
Wire Insulation Diameter	3.56mm (.140") max
Wire Size AWG	18
Wire Size AWG	20
Wire Size AWG	22
Wire Size mm <sup>2</sup>	0.35 - 0.80

**Electrical**

UL	E32244
Voltage - Maximum	600V

**Material Info**

Old Part Number	AS-N-345
-----------------	----------

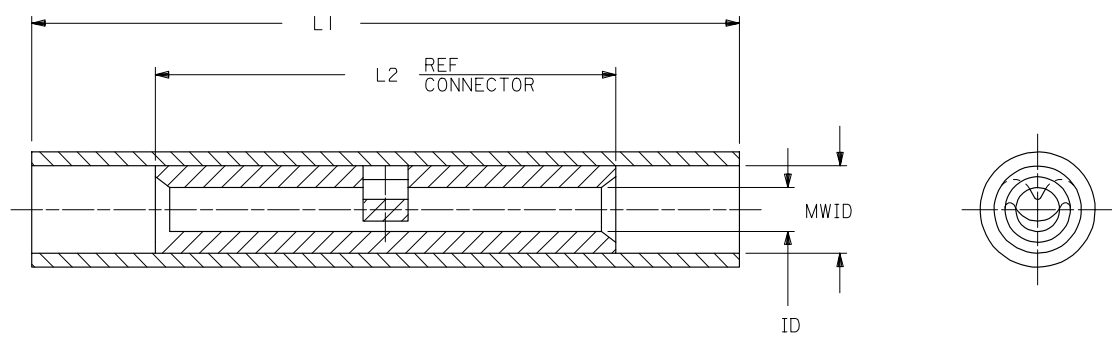
**Reference - Drawing Numbers**

Sales Drawing	60002-11C
Sales Drawing	6000211C

PART NO.	INSULATION COLOR	WIRE SIZE	ID	L1 MAX.	L2 MAX.	MWID
AS-N-345	RED	22-18	.059	1.035	.675	.130
BS-N-331	BLUE	16-14	.091	1.080	.675	.140
CS-N-346	YELLOW	12-10	.138	1.300	.827	.223

ⓑ

NOTES:  
 1. MATERIAL:  
 INSULATION: NYLON  
 CONNECTOR: TIN PLATED SEAMLESS COPPER  
 3. IF NECESSARY; SLIGHT FLARE ON ONE END ACCEPTABLE FOR ASSEMBLY PURPOSES.

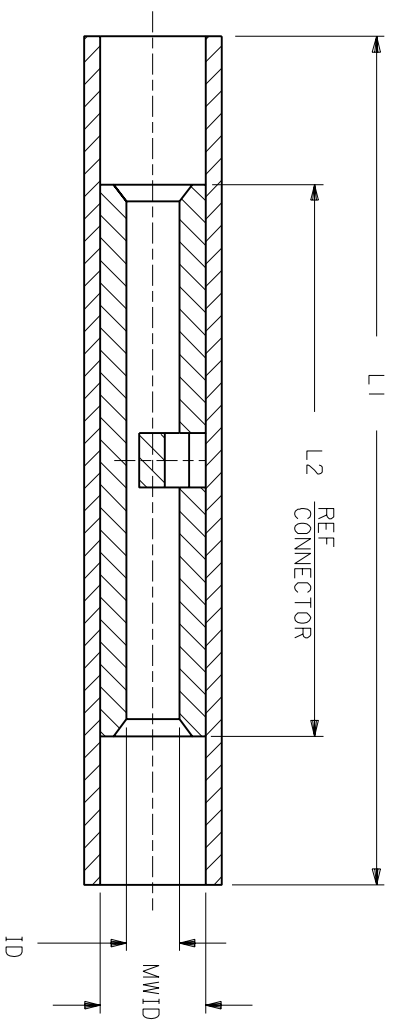


# CUSTOMER DRAWING

REVISED & REDRAWN EC NO: B DRWN: SHADECK CHKD: ROERSS APPR: ROERSS 2005/06/13 2005/06/21 2005/06/21	QUALITY SYMBOLS ▽=0 ▽=0	GENERAL TOLERANCES (UNLESS SPECIFIED)		DIMENSION STYLE IN/MM	SCALE 4:1	DESIGN UNITS INCH	THIRD ANGLE PROJECTION		
		4 PLACES ±--- 3 PLACES ±--- 2 PLACES ±--- 1 PLACE ±---	mm INCH	DRAWN BY EMF	DATE 07/03/91	TITLE NYLAKRIMP BUTT CONNECTOR			
		ANGULAR ±---°	DRAFT WHERE APPLICABLE MUST REMAIN WITHIN DIMENSIONS	CHECKED BY JM	DATE 07/03/91	APPROVED BY FP			
		MATERIAL NO. SEE TABLE	DOCUMENT NO. 60002-11C	MOLEX INCORPORATED		SHEET NO. 1 OF 1			

1b\_frame\_A\_P\_ME\_T  
 Rev. D 2004/04/02

PART NO.	INSULATION COLOR	WIRE SIZE	ID	L1 MAX	L2 MAX	MWID
AS-N-345	RED	22-18	.059	1.035	.675	.130
BS-N-331	BLUE	16-14	.091	1.080	.675	.160
CS-N-346	YELLOW	12-10	.138	1.300	.827	.223



NOTES:  
 1. MATERIAL:  
 INSULATION: NYLON  
 CONNECTOR: TIN PLATED SEAMLESS COPPER  
 3. IF NECESSARY: SLIGHT FLARE ON ONE END ACCEPTABLE FOR ASSEMBLY PURPOSES.

# CUSTOMER DRAWING

DIMENSIONS SHOWN (METRIC) INCH  
 UNLESS OTHERWISE SPECIFIED  
 TOLERANCES: ANGULAR = 1/2°

	INCH	METRIC
3 PLACE	± .005	± 0.13
2 PLACE	± .01	± 0.25
1 PLACE	± ---	± ---

DRAFT WHERE APPLICABLE MUST REMAIN WITHIN DIMENSIONS

DRWG. BY	EMF	CHK'D. BY	JM
APP'D. BY	FP	SCALE	NO: NE

DRWG. NO. 60002-11C

REVISE ONLY ON CAD SYSTEM

NYLAKRIMP BUTT CONNECTOR

LTR.	REVISIONS
A	ADD P/N AND UPDATE DRAWINGS ET80539 12/18 HEB

molex **ETC INC.** PINELLAS PARK, FLA. 33781 U.S.A. SHEET NO. 1 OF 1 DATE 91/07/03

PART NO. 60002-11C

FILE NAME: SEE TABLE THIS DRAWING CONTAINS INFORMATION THAT IS PROPRIETARY TO MOLEX-ETC INC. AND SHOULD NOT BE USED WITHOUT WRITTEN PERMISSION. DIV. ET A