

Series image - Reference only

| | |
|------------------------|------------|
| EU RoHS | China RoHS |
| ELV and RoHS Compliant | |

Search Parts in this Series

[19003 Series](#)

Application Tooling

Global

Description

Hand Crimp Tool

Hand Crimp Tool

Crimp Head for the AT-200™ Pneumatic Hand Tool

Product

[0640010400](#)

[0640010700](#)

[0640050400](#)

Part Number: **0190030001**

Status: **Active**

Description: InsulKrimp™ Quick Disconnect, Female, for 18-22 (0.80-0.35), Box, Tab 6.35mm (.250") x 0.81mm (.032")

Documents:

- [Drawing \(PDF\)](#)
- [Product Specification PS-19902-008 \(PDF\)](#)
- [Related Catalog Page \(PDF\)](#)

Order Products:

[Check Distributor Inventory](#)

Part Detail: (show all)○ **General**○ **Physical**○ **Electrical**○ **Material Info**○ **Reference - Drawing Numbers****General**

| | |
|----------------|-------------------|
| Product Family | Quick Disconnects |
| Series | 19003 |
| Comments | Funnel Entry |
| Product Name | InsulKrimp™ |
| Type | Quick Disconnect |

Physical

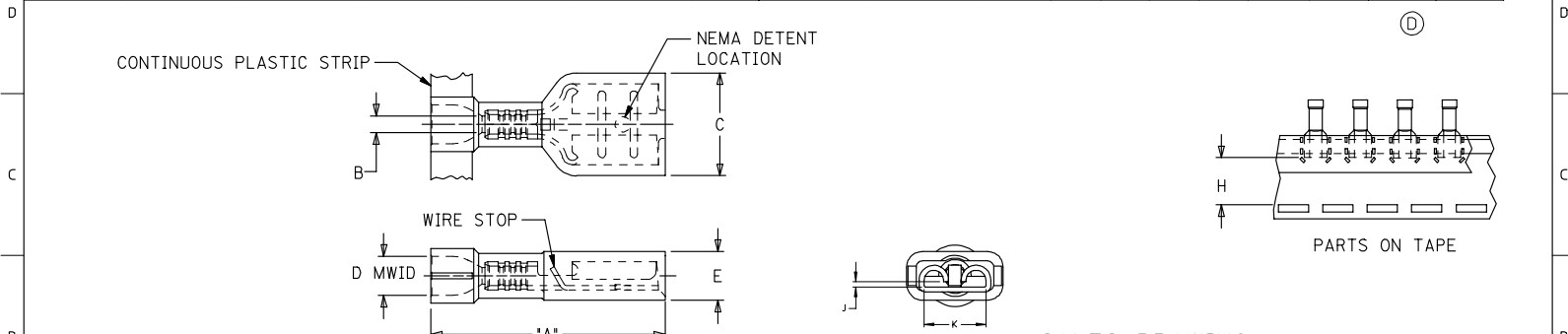
| | |
|-------------------------------|---------------------|
| Barrel Type | Closed |
| Color - Resin | Natural |
| Flammability | 94 V0 |
| Gender | Female |
| Insulation | PVC |
| Lock to Mating Part | None |
| Material - Metal | Brass |
| Material - Resin | Nylon |
| Orientation | Straight |
| Packaging Type | Box |
| Polarized to Mating Part | No |
| Tab Thickness | 0.81mm (.032") |
| Tab Width | 6.35mm (.250") |
| Temperature Range - Operating | -65°C to +105°C |
| Wire Insulation Diameter | 3.43mm (.135") max. |
| Wire Size AWG | 18 |
| Wire Size AWG | 20 |
| Wire Size AWG | 22 |
| Wire Size mm ² | 0.35 - 0.80 |

Electrical

| | |
|-------------------|---------|
| CSA | LR18689 |
| UL | E79133 |
| Voltage - Maximum | 600V |

Material Info

| | 10 | 9 | 8 | 7 | 6 | 5 | 4 | 3 | 2 | 1 | | | | | | | | |
|---|--------------------------------------|---|---|--|-------------------------------------|--|----------------------|-----------------------|---------------------|-----------------|-------------|-------------|-------------|-------------|-------------|--------------|------------|------------|
| | LOOSE PIECE MATERIAL NUMBER | LOOSE PIECE ENGINEERING NUMBER | CONTINUOUS STRIP MATERIAL NUMBER | CONTINUOUS STRIP ENGINEERING NUMBER | MYLAR TAPE MATERIAL NUMBER | MYLAR TAPE ENGINEERING NUMBER | WIRE RANGE AWG | FITS MALE TAB SIZE | INSULATION COLOR | STOCK THICK. | "A" MAX. | "B" MIN. | "C" MAX. | "D" MWID | "E" MAX. | "H" ±.010 | J ±.003 | K ±.005 |
| F | 190030071 | M-2212 | 190030106 | M-2212C | 190030073 | M-2212T | 26-24 | .250x.032 | YELLOW | .016 | .86 | .030 | .380 | .075 | .180 | .560 | .025 | .259 |
| | 190030064 | M-2210 | 190030103 | M-2210C | 190030067 | M-2210T | 26-24 | .187x.020 | YELLOW | .016 | .78 | .030 | .316 | .075 | .160 | .600 | .017 | .196 |
| | 190030068 | M-2211 | 190030104 | M-2211C | 190030070 | M-2211T | 26-24 | .187x.032 | YELLOW | .016 | .78 | .030 | .316 | .075 | .160 | .600 | .025 | .196 |
| | 190030001 | AA-2201 | 190030105 | AA-2201C | 190030003 | AA-2201T | 22-18 | .250x.032 | RED | .016 | .86 | .058 | .380 | .135 | .180 | .560 | .025 | .259 |
| | 190030036 | AA-2213 | 190030109 | AA-2213C | 190030074 | AA-2213T | 22-18 | .205x.020 | RED | .016 | .78 | .058 | .316 | .135 | .160 | .600 | .017 | .214 |
| | 190030038 | AA-2214 | 190030110 | AA-2214C | 190030075 | AA-2214T | 22-18 | .205x.032 | RED | .016 | .78 | .058 | .316 | .135 | .160 | .600 | .025 | .214 |
| | 190030011 | AA-2202 | 190030107 | AA-2202C | 190030013 | AA-2202T | 22-18 | .187x.020 | RED | .016 | .78 | .058 | .316 | .135 | .160 | .600 | .017 | .196 |
| | 190030017 | AA-2203 | 190030108 | AA-2203C | 190030020 | AA-2203T | 22-18 | .187x.032 | RED | .016 | .78 | .058 | .316 | .135 | .160 | .600 | .025 | .196 |
| E | 190030024 | AA-2204 | 190030097 | AA-2204C | 190030026 | AA-2204T | 22-18 | .110x.020 | RED | .012 | .78 | .058 | .230 | .135 | .150 | .615 | .017 | .125 |
| | 190030030 | AA-2205 | 190030098 | AA-2205C | 190030032 | AA-2205T | 22-18 | .110x.032 | RED | .012 | .78 | .058 | .230 | .135 | .150 | .615 | .025 | .125 |
| | 190030040 | BB-2206 | 190030041 | BB-2206C | 190030042 | BB-2206T | 16-14 | .250x.032 | BLUE | .016 | .86 | .083 | .380 | .160 | .180 | .560 | .025 | .259 |
| | 190030062 | BB-2215 | 190030085 | BB-2215C | 190030077 | BB-2215T | 16-14 | .205x.020 | BLUE | .016 | .78 | .083 | .316 | .160 | .170 | .600 | .017 | .214 |
| | 190030063 | BB-2216 | 190030086 | BB-2216C | 190030078 | BB-2216T | 16-14 | .205x.032 | BLUE | .016 | .78 | .083 | .316 | .160 | .170 | .600 | .025 | .214 |
| | 190030050 | BB-2207 | 190030051 | BB-2207C | 190030052 | BB-2207T | 16-14 | .187x.020 | BLUE | .016 | .78 | .083 | .316 | .160 | .170 | .600 | .017 | .196 |
| | 190030056 | BB-2208 | 190030057 | BB-2208C | 190030058 | BB-2208T | 16-14 | .187x.032 | BLUE | .016 | .78 | .083 | .316 | .160 | .170 | .600 | .025 | .196 |
| D | 196060002 | 19606-0002 | 196060001 | 19606-0001 | 196060003 | 19606-0003 | 12-10 | .250x.032 | YELLOW | .018 | 1.03 | .120 | .380 | .240 | .220 | .508 | .025 | .259 |



SALES DRAWING

1. MATERIAL: TERMINAL: BRASS
 PLATING: ELECTRO-TIN
 FERRULE: BRASS
 PLATING: ELECTRO-TIN
 INSULATION: NYLON 6/6 94V-2.
 COLOR: SEE CHART
 2. MWID = MAXIMUM WIRE INSULATION
 DIAMETER

| | | | | | | | |
|---|--|---|---|--------------------|---------------------------------------|------------------------|--|
| ADD ROW J&K EC NO: ETC2007-0213 DRAWN: ILOMASTRO 2006/12/01 CHKD: MACNEIL 2006/12/01 APPR: MACNEIL 2006/12/04 REV DESCRIPTION | QUALITY SYMBOLS | GENERAL TOLERANCES (UNLESS SPECIFIED) | DIMENSION STYLE | SCALE | DESIGN UNITS | THIRD ANGLE PROJECTION | |
| | ▽=0 ∇=0 | mm INCH | IN/MM | --- | INCH | | |
| | | 4 PLACES ± --- ± --- 3 PLACES ± --- ± --- 2 PLACES ± --- ± --- 1 PLACE ± --- ± --- | DRAWN BY BRE DATE 02/03/20 CHECKED BY HEB DATE 02/03/20 APPROVED BY RWD DATE 02/03/20 | TITLE | INSULKRIMP FEMALE FIQD STANDARD FLARE | | |
| | | ANGULAR ± --- ° | MATERIAL NO. SEE CHART DOCUMENT NO. SD-19003-005 | MOLEX INCORPORATED | | | |
| | DRAFT WHERE APPLICABLE MUST REMAIN WITHIN DIMENSIONS | SIZE B | THIS DRAWING CONTAINS INFORMATION THAT IS PROPRIETARY TO MOLEX INCORPORATED AND SHOULD NOT BE USED WITHOUT WRITTEN PERMISSION | | | | |

F
E
D
C
B
A