

# AI-TWIN 2X 1 -10 RD


Order No.: 3200988



<http://eshop.phoenixcontact.de/phoenix/treeViewClick.do?UID=3200988>

Ferrule, Length: 17 mm, Color: red

## Commercial data

GTIN (EAN)	 4 017918 094539
sales group	B252
Pack	100 pcs.
Customs tariff	85369010
Catalog page information	Page 310 (CL2-2011)

## Product notes

WEEE/RoHS-compliant since:  
03/03/2005



<http://www.download.phoenixcontact.com>  
Please note that the data given here has been taken from the online catalog. For comprehensive information and data, please refer to the user documentation. The General Terms and Conditions of Use apply to Internet downloads.

## Technical data

### General

Length (b)	17 mm
Color	red
Material	E-CU
Sleeve length	10 mm
Inner dimension of the insulating collar (d)	3.4 mm

Ferrule diameter	2.05 mm
Insulating collar thickness	0.3 mm
Sleeve wall thickness	0.15 mm
Dimension d3	5.4 mm

### Certificates / Approvals

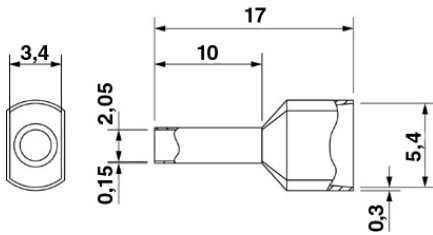


Certification

CSA, CSAus-COMP

### Diagrams/Drawings

Dimensioned drawing



**Address**

PHOENIX CONTACT Inc., USA  
586 Fulling Mill Road  
Middletown, PA 17057, USA  
Phone (800) 888-7388  
Fax (717) 944-1625  
<http://www.phoenixcon.com>



© 2011 Phoenix Contact  
Technical modifications reserved;