

Switch Language

English

Need Assistance?

Contact Us  
Find a Distributor  
Order Samples  
Tech Library

Printer-friendly page

Email this page

[Home](#)   [Quick Disconnects](#)   [Datasheet](#)

**Part Number:** 0190010008

**Status:** Active

**Description:** Avikrimp™ Quick Disconnect, Male, for 14-16 (2.00-1.30), Box, Tab 4.75mm (.187") x 0.51mm (.020")

**Documents:**

Note - Please disable browser pop-up blockers for documents on [www.molex.com](http://www.molex.com)

[Drawing \(PDF\)](#)

[Related Catalog Page \(PDF\)](#)

**Order Products:**

[Check Distributor Inventory](#)

[Add to My Parts](#)

[Request Samples](#)

**Part Detail:** ([show all](#))

[General](#)   [Physical](#)   [Electrical](#)   [Material Info](#)

**General**

Product Family	Quick Disconnects
Series	<u>19001</u>
Product Name	Avikrimp™
Type	Quick Disconnect

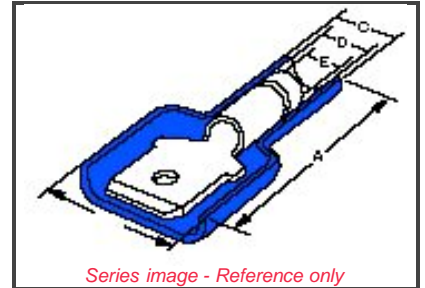
**Physical**

Barrel Type	Closed
Flammability	94 V-0
Gender	Male
Insulation	Nylon (PA)
Lock to Mating Part	None
Material - Metal	Copper
Material - Plating Mating	Zinc Chromate
Material - Plating Termination	Zinc Chromate
Orientation	Straight
Packaging Type	Bag
Plating min: Mating (uin)	200
Plating min: Mating (um)	5
Plating min: Termination (uin)	200
Plating min: Termination (um)	5
Polarized to Mating Part	No
Tab Thickness	0.51mm (.020")
Tab Width	4.75mm (.187")
Temperature Range - Operating	-65°C to +105°C
Wire Insulation Diameter	4.32mm (.170") max.
Wire Size AWG	14
Wire Size AWG	16
Wire Size mm²	1.30 - 2.00

**Electrical**

CSA	LR18689
TUV	R9071070
UL	E79133
Voltage - Maximum	300V

**Material Info**



Series image - Reference only

**EU RoHS**

**ELV and RoHS Compliant**

**China RoHS**



**Need more information on product compliance?**

Email [productcompliance@molex.com](mailto:productcompliance@molex.com)

Please visit the [Contact Us](#) section for any non-product compliance questions.

**Search Parts in this Series**

19001 Series

**Use With**

19002-0028, 19002-0029, 19002-0030

**Application Tooling**

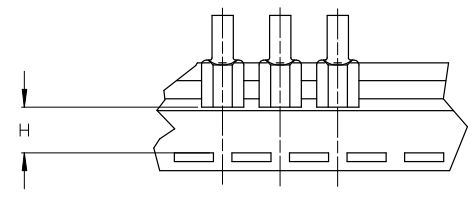
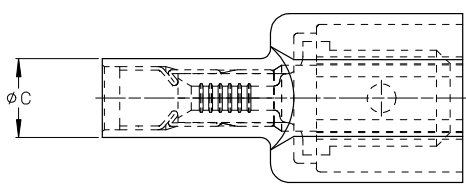
*Tooling specifications and manuals are found by selecting the products below. Crimp Height Specifications are then contained in the Application Tooling Specification document.*

**Global**

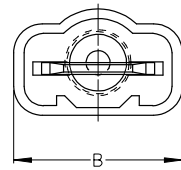
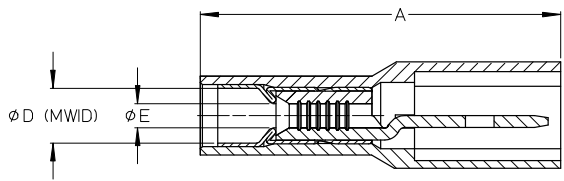
Description	Product #
Hand Crimp Tool	<a href="#">0640012600</a>
Crimp Head for the AT-200™ Pneumatic Hand Tool	<a href="#">0640052600</a>

Old Part Number	BB-5268
<b>Reference - Drawing Numbers</b>	
Sales Drawing	SD-19001-003

ASSEMBLY NUMBER		TAPE NUMBER		ITEM DESCRIPTION			DIMENSIONS					
MATERIAL NUMBER	ENGINEERING NUMBER	MATERIAL NUMBER	TAPE ENG. NUMBER	COLOR	WIRE GAUGE	TAB SIZE	'A' MAX	'B' MAX	'C' MAX	'D' MIN	'E' MIN	'H' REF
190010001	AA-5260	190010002	AA-5260T	RED	22-18AWG (0.38-0.96mm <sup>2</sup> )	.250 x .032 (6.35 x 0.81)	.96/24.4	.45/11.4	.22/5.6	.140/3.56	(A).054/1.37	.48/12.2
190010003	AA-5266	190010005	AA-5266T	RED	22-18AWG (0.38-0.96mm <sup>2</sup> )	.187 x .020 (4.75 x 0.51)	.90/22.9	.38/9.7	.22/5.6	.170/4.32	(A).054/1.37	.52/13.3
190010006	BB-5262	190010007	BB-5262T	BLUE	16-14 AWG (1.23-1.94mm <sup>2</sup> )	.250 x .032 (6.35 x 0.81)	.96/24.4	.45/11.4	.25/6.4	.140/3.56	.084/2.13	.48/12.2
190010008	BB-5268	190010009	BB-5268T	BLUE	16-14 AWG (1.23-1.94mm <sup>2</sup> )	.187 x .020 (4.75 x 0.51)	.90/22.9	.38/9.7	.25/6.4	.170/4.32	.084/2.13	.52/13.3



TAPE MOUNTING DETAIL



- (A) NOTES:
1. TERMINAL MATERIAL: BRASS
  2. TERMINAL PLATING: ZINC CHROMATE
  3. HOUSING: 6/6 NYLON
  4. MVID: MAXIMUM WIRE INSULATION DIAMETER
  5. TAB DIMENSIONS CONFORM TO UL310 SPECIFICATIONS.
  6. ASSEMBLY IS ROHS COMPLIANT

REDRAW: MATERIALS EC NO: ETC2007-0081 DRAWN BY: DRW:MHLE 2008/01/28 CHKD: JMCNEIL 2008/01/28 APPR: JMCNEIL 2008/02/13 REV: A	QUALITY SYMBOLS ▽=0 ▽=0	GENERAL TOLERANCES (UNLESS SPECIFIED)		DIMENSION STYLE IN/MM (A)	SCALE 4:1	DESIGN UNITS INCH	THIRD ANGLE PROJECTION
		4 PLACES ± --- ± --- 3 PLACES ± --- ± .005 2 PLACES ± 0.13 ± .01 1 PLACE ± 0.25 ± --- ANGULAR ± ---°	DRAWN BY: RCM DATE: 1990/05/11 CHECKED BY: RDEROSS DATE: 1990/05/11 APPROVED BY: RDEROSS DATE: 1990/05/11	TITLE AVIKRIMP FULLY INSULATED MALE TAB		MOLEX INCORPORATED	
DRAFT WHERE APPLICABLE MUST REMAIN WITHIN DIMENSIONS		MATERIAL NO. SEE CHART	DOCUMENT NO. SD-19001-003	SHEET NO. 1 OF 1			