

Part Number: [0502128100](#)
Status: **Active**
Overview: [Micro-Latch™](#)
Description: 2.00mm (.079") Pitch Crimp Terminal, Female, 24-30 AWG, Bag

Series image - Reference only

EU RoHS
ELV and RoHS
Compliant

China RoHS



General

Product Family	Crimp Terminals
Series	50212
Overview	Micro-Latch™
Product Name	Mi II™
Product Name	Micro-Latch™
Product Name	Sherlock™

Physical

Gender	Female
Material - Metal	Phosphor Bronze
Material - Plating Mating	Tin
Material - Plating Termination	Tin
Packaging Type	Bag
Termination Interface: Style	Crimp or Compression
Wire Insulation Diameter	1.40mm (.055") max.
Wire Size AWG	24
Wire Size AWG	26
Wire Size AWG	28
Wire Size AWG	30
Wire Size mm²	N/A

Electrical

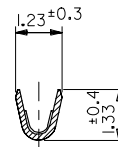
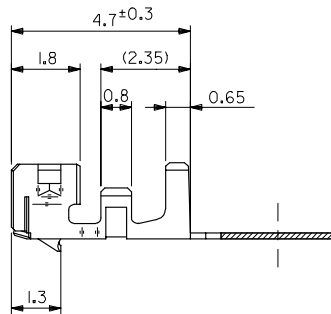
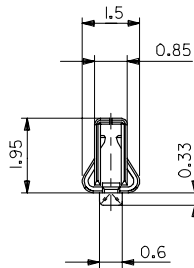
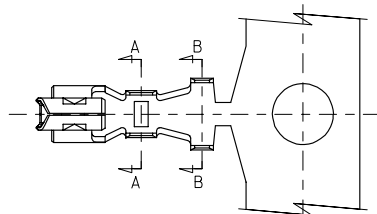
Current - Maximum	2.000 Amp
Voltage - Maximum	125V

Material Info

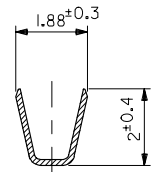
10 9 8 7 6 5 4 3 2 1

注記

- 適用ハウジング: 51065-**-00
 APPLICABLE HOUSING 51089-**-05
 51090-**-00
- 材質:
 MATERIAL
 リン青銅
 PHOSPHOR BRONZE
 鍍メッキ
 PRE-TINNED
 t=0.152



SECT. A-A



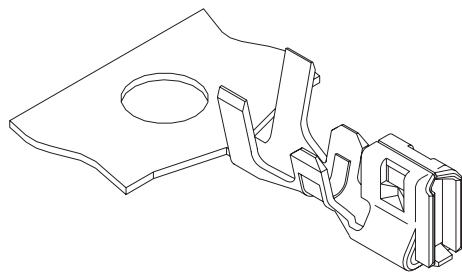
SECT. B-B

50212-8100	バラ状
50212-8000	連鎖状
MATERIAL NO.	端子形状

REVISED EC NO. J2006-1104 DRW:ESUZUKI 2005/10/05 CHK:KTOYODA 2005/10/06 APPR:NIKIITA 2005/10/13 C REV DESCRIPTION	GENERAL TOLERANCES (UNLESS SPECIFIED)		DIMENSION STYLE MM ONLY		SCALE 10:1	DESIGN UNITS METRIC	THIRD ANGLE PROJECTION	
	10 UNDER	±0.2	DRAWN BY SAIHARA	DATE 89/09/21	TITLE NEW 2.0 WIRE TO BOARD CONN. CRIMP RECEPTACLE MOLEX INCORPORATED DOCUMENT NO. SD-50212-001 SHEET NO. 1 OF 1			
	10 OVER 30 UNDER	±0.25	CHECKED BY MFUKUSHIMA	DATE 92/01/31				
	30 OVER	±0.3	APPROVED BY MENOMOTO	DATE 92/01/31				
ANGULAR ±3 °		DRAFT WHERE APPLICABLE MUST REMAIN WITHIN DIMENSIONS		MATERIAL NO. SEE CHART				
				SIZE A3	THIS DRAWING CONTAINS INFORMATION THAT IS PROPRIETARY TO MOLEX INCORPORATED AND SHOULD NOT BE USED WITHOUT WRITTEN PERMISSION			

2.00mm (.079") Pitch Wire-to-Board Crimp Terminal

50212



Order No.	Terminal	Lead-free
50212-8000	Reel	Yes
50212-8100	Bag	

Features and Benefits

- Locking tang provides terminal retention to housing

Reference Information

Packaging: Reel or bag
 Use With: 35507, 51065, 51089, 51090 and 87369 housings
 Designed In: Millimeters

Electrical

Voltage: 125V

Current:

AWG	24	26	28	30
	2.0A	1.5A	1.0A	0.5A

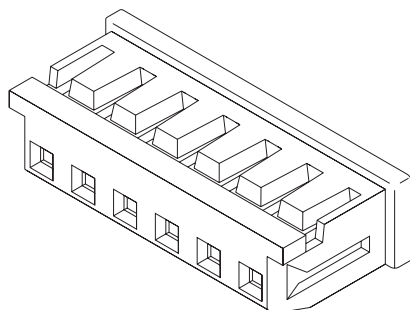
Contact Resistance: 20 milliohms max.
 Dielectric Withstanding Voltage: 500V AC/1 min.
 Insulation Resistance: 1000 Megohms min.

Physical

Contact: Phosphor Bronze
 Plating: Tin
 Wire Range: 24 to 30 AWG
 Insulation Range: 1.40mm dia. max.
 Strip Length: 1.3 to 1.8mm
 Operating Temperature: -40 to +105°C

2.00mm (.079") Pitch Micro-Latch™ Wire-to-Board Housing

51065



Features and Benefits

- Sizes 2 to 15 circuits
- Housing lance provides extra terminal retention
- Friction lock provides secure mating

Reference Information

Packaging: Bag
 UL File No.: E29179
 CSA File No.: LR19980
 Mates With: 53253 and 53254
 Use With: 50212
 Designed In: Millimeters

Electrical

Voltage: 125V

Current:

AWG	24	26	28	30
	2.0A	1.5A	1.0A	0.5A

Contact Resistance: 20 milliohms max.
 Dielectric Withstanding Voltage: 500V AC/1 min.
 Insulation Resistance: 1000 Megohms min.

Physical

Housing: PBTP, UL 94V-0
 Operating Temperature: -40 to +85°C

Circuits	Order No.
2	51065-0200
3	51065-0300
4	51065-0400
5	51065-0500
6	51065-0600

Circuits	Order No.
7	51065-0700
8	51065-0800
9	51065-0900
10	51065-1000
11	51065-1100

Circuits	Order No.
12	51065-1200
13	51065-1300
14	51065-1400
15	51065-1500