

Series image - Reference only

EU RoHS	China RoHS
ELV and RoHS Compliant	

Search Parts in this Series

[19007 Series](#)

Application Tooling

Global

Description

Hand Crimp Tool

Crimp Head for the AT-200™ Pneumatic Hand Tool

Product

[0640014100](#)

[0640054100](#)

Part Number: **0190070029**

Status: **Active**

Description: Flag InsulKrimp™ Quick Disconnect, Female, for 14-16 (2.00-1.30) Wire, Box, Tab 4.75mm (.187") x 0.51mm (.020")

Documents:

- [Drawing \(PDF\)](#)
- [Product Specification PS-19902-008 \(PDF\)](#)
- [Related Catalog Page \(PDF\)](#)

Order Products:

- [Check Distributor Inventory](#)
- [Request Samples](#)

o

Part Detail: (show all)

o **General**

o **Physical**

o **Electrical**

o **Material Info**

o **Reference - Drawing Numbers**

General

Product Family	Quick Disconnects
Series	<u>19007</u>
Product Name	InsulKrimp™
Type	Quick Disconnect

Physical

Barrel Type	Closed
Color - Resin	Natural
Flammability	94 V0
Gender	Female
Insulation	Nylon (PA)
Lock to Mating Part	None
Material - Metal	Brass
Material - Resin	Nylon
Orientation	Flag
Packaging Type	Box
Polarized to Mating Part	No
Tab Thickness	0.51mm (.020")
Tab Width	4.75mm (.187")
Temperature Range - Operating	-65°C to +105°C
Wire Insulation Diameter	5.08mm (.200") max.
Wire Size AWG	14
Wire Size AWG	16
Wire Size mm ²	1.30 - 2.00

Electrical

CSA	LR18689
UL	E79133
Voltage - Maximum	600V

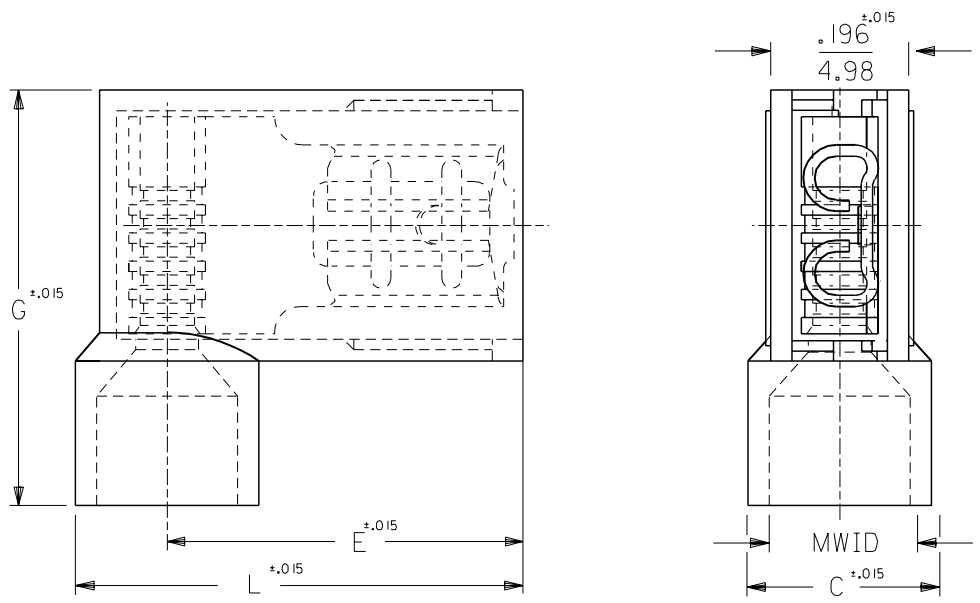
Material Info

Old Part Number	BB-2224
-----------------	---------

Reference - Drawing Numbers

6 5 4 3 2 1

DRWG. NO. CUST. DRWG.



PART NO.	AWG	COLOR	MWID	TAB SIZE	L	G	E	C
AA-2222	22-18	RED	.176/4.47	.187x.020	.630/16.00	.585/14.86	.512/13.00	.236/5.99
AA-2222-X	22-18	RED	.240/6.10	.187x.020	.662/16.81	.625/15.88	.512/13.00	.300/7.62
AA-2223	22-18	RED	.176/4.47	.187x.032	.630/16.00	.585/14.86	.512/13.00	.236/5.99
AA-2223-X	22-18	RED	.240/6.10	.187x.032	.662/16.81	.625/15.88	.512/13.00	.300/7.62
BB-2224	16-14	BLUE	.200/5.08	.187x.020	.630/16.00	.585/14.86	.500/12.70	.260/6.60
BB-2224-X	16-14	BLUE	.265/6.73	.187x.020	.670/17.02	.625/15.88	.500/12.70	.325/8.26
BB-2225	16-14	BLUE	.200/5.08	.187x.032	.630/16.00	.585/14.86	.500/12.70	.260/6.60
BB-2225-X	16-14	BLUE	.265/6.73	.187x.032	.670/17.02	.625/15.88	.500/12.70	.325/8.26

A	TWO METRIC DIM. WERE 15.75 NOW 16.00 06/05/92 RCM
LTR.	REVISIONS

NOTES:
 1. MWID = MAX. WIRE INSULATION DIA.
 2. ALL DIMENSIONS = INCHES/MM

DIMENSIONS SHOWN (METRIC) INCH	
UNLESS OTHERWISE SPECIFIED TOLERANCES: ANGULAR ± 1/2°	
INCH	METRIC
3 PLACE ± .005	± ---
2 PLACE ± .01	± 0.13
1 PLACE ± ---	± 0.25
DRAFT WHERE APPLICABLE MUST REMAIN WITHIN DIMENSIONS	
DRWG. BY RM	CHK'D. BY JM
APP'D. BY FP	SCALE 5:1

REVISE ONLY ON CAD SYSTEM	
TITLE FLAG FULLY INSULATED .187x.020, & .032 TAB	
molex ETC INC. PINELLAS PARK, FLA. 33781 U.S.A.	SHEET NO. DATE 07/26/89
PART NO.	DRWG. NO. CUST. DRWG.
FILE NAME CDFLG187	THIS DRAWING CONTAINS INFORMATION THAT IS PROPRIETARY TO MOLEX-ETC INC. AND SHOULD NOT BE USED WITHOUT WRITTEN PERMISSION.
DIV.	SIZE A

6 5 4 3 2 1