

Switch Language

English

Need Assistance?

- Contact Us
- Find a Distributor
- Order Samples
- Tech Library

Printer-friendly page

Email this page

[Home](#) [Ring and Spade Terminals](#) [Datasheet](#)

**Part Number: 0190690107**

**Status: Active**

**Description:** Krimptite™ Ring Tongue Terminal for 14-16 AWG Wire

**Documents:**

Note - Please disable browser pop-up blockers for documents on [www.molex.com](http://www.molex.com)  
[Drawing \(PDF\)](#) [Related Catalog Page \(PDF\)](#)

**Order Products:**

[Check Distributor Inventory](#) [Add to My Parts](#)  
[Request Samples](#)

**Part Detail:** [\(show all\)](#)

[General](#) [Physical](#) [Electrical](#) [Material Info](#)

**General**

Product Family	Ring and Spade Terminals
Series	<a href="#">19069</a>
Mil-Spec	N/A
Product Name	Krimptite™
Type	Ring

**Physical**

Barrel Type	Closed
Insulation	None
Material - Plating Mating	Tin
Packaging Type	Bag
Plating min: Mating (µin)	100
Plating min: Mating (µm)	2.5
Plating min: Termination (µin)	100
Plating min: Termination (µm)	2.5
Stud Size	1/4" (M6)
Wire Size AWG	14
Wire Size AWG	16
Wire Size mm²	1.30 - 2.00

**Electrical**

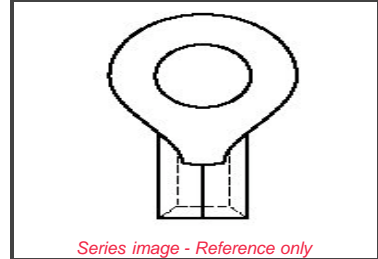
CSA	LR18689
UL	E32244

**Material Info**

Old Part Number	BB-125-14
-----------------	-----------

**Reference - Drawing Numbers**

Sales Drawing	SD-19069-013
---------------	--------------



Series image - Reference only

**EU RoHS**  
**ELV and RoHS Compliant**

**China RoHS**



**Need more information on product compliance?**

Email [productcompliance@molex.com](mailto:productcompliance@molex.com)

Please visit the [Contact Us](#) section for any non-product compliance questions.

**Search Parts in this Series**

[19069](#) Series

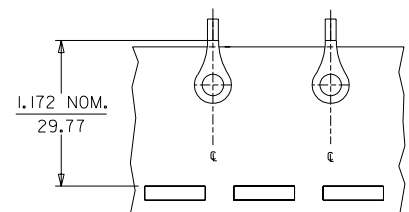
**Application Tooling**

*Tooling specifications and manuals are found by selecting the products below. Crimp Height Specifications are then contained in the Application Tooling Specification document.*

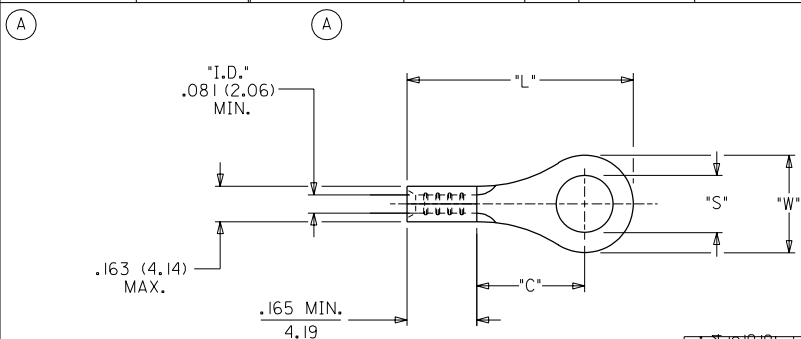
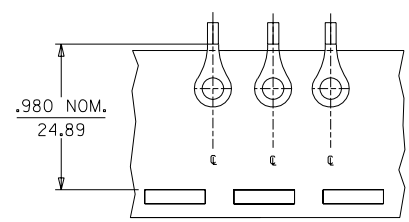
**Global**

Description	Product #
Hand Crimp Tool	<a href="#">0640030100</a>
Crimp Head for the AT-200™ Pneumatic Hand Tool	<a href="#">0640070100</a>

MATERIAL NO. LOOSE PIECE	ENG. NO.	MATERIAL NO. TAPE MOUNTED	ENG. NO.	STUD SIZE	±.003 "S"	"W" MAX. (A)	"C" MIN.	"L" MAX.
190690091	BB-118-10			10	.198 (5.03)			
190690092	BB-118-14	190690133	BB-118-14T	14	.265 (6.73)	.544 (13.82)	.535 (13.59)	1.010 (25.65)
190690093	BB-118-38	190690094	BB-118-38T	56	.328 (8.33)			
190690096	BB-118-56	190690097	BB-118-56T	38	.390 (9.91)			
190690098	BB-123-02	190690134	BB-123-02T	2	.094 (2.39)			
190690099	BB-123-04	190690100	BB-123-04T	4	.119 (3.02)	.260 (6.60)	.209 (5.31)	.560 (14.22)
190690101	BB-123-06	190690102	BB-123-06T	6	.146 (3.71)			
190690103	BB-123-08	190690104	BB-123-08T	8	.173 (4.39)			
190690105	BB-125-10	190690106	BB-125-10T	10	.198 (5.03)			
190690107	BB-125-14	190690108	BB-125-14T	14	.265 (6.73)	.477 (12.11)	.388 (9.86)	.837 (21.26)
190690109	BB-125-56	190690110	BB-125-56T	56	.328 (8.33)			
190690112	BB-137-06	190690113	BB-137-06T	6	.146 (3.71)			
190690114	BB-137-08	190690115	BB-137-08T	8	.173 (4.39)	.322 (8.18)	.275 (6.98)	.645 (16.38)
190690116	BB-137-10	190690117	BB-137-10T	10	.198 (5.03)			
190690119	BB-139-04			4	.119 (3.02)			
190690120	BB-139-06	190690138	BB-139-06T	6	.146 (3.71)	.352 (8.94)	.305 (7.75)	.696 (17.68)
190690121	BB-139-08	190690122	BB-139-08T	8	.173 (4.39)			
190690123	BB-139-10	190690124	BB-139-10T	10	.198 (5.03)			



ENG. NO. BB-118-\*\* ONLY



SALES DRAWING

NOTE(S):  
 1. MATERIAL: COPPER (.031/0.79 THICK)  
 PLATING: ELECTROPLATE TIN  
 WIRE SIZE: 16-14 AWG  
 1.0 - 2.5 MM<sup>2</sup>

UPDATE TO MAX STDS: EC NO. ETC2003-0184 DRW/DLM 04/05/05 CHK: HB 04/05/05 APPR: RWD 04/05/05	QUALITY SYMBOLS MAJOR = 0 CRITICAL = 0	GENERAL TOLERANCES: (UNLESS SPECIFIED) mm INCH 4 PLACES ±0.--- ±.--- 3 PLACES ±0.--- ±.005 2 PLACES ±0.13 ±.010 1 PLACE ±0.25 ±.--- ANGULAR: ±1/2°	SCALE NTS DESIGN UNITS <input type="checkbox"/> mm <input checked="" type="checkbox"/> INCH THIRD ANGLE PROJECTION	DRAWN BY & DATE DLM 03/02/21 CHECKED BY & DATE SB 03/02/21 APPROVED BY & DATE RWD 03/02/21	DIMENSIONS: <input type="checkbox"/> mm <input checked="" type="checkbox"/> INCH <input type="checkbox"/> mm ONLY	SHT REV REVISE ON CAD ONLY
	TITLE: RING TONGUE TERMINAL KRIMPTITE 16-14 AWG					
	MOLEX INCORPORATED					
	CAD FILENAME: SD19069013.DGN MATERIAL NO. (SEE CHART) DRAWING NO. SD-19069-013 SHEET NO. 1 OF 1 SIZE B					