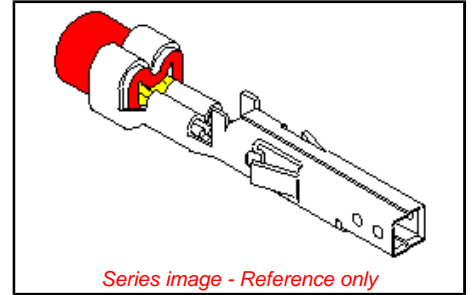


**Part Number:** [0444763112](#)  
**Status:** **Active**  
**Overview:** [Mini-Fit HCS™](#)  
**Description:** Mini-Fit HCS™ Crimp Terminal 44476, 16 AWG, Bag, Copper (Cu) Alloy, Tin (Sn)



Series image - Reference only

## General

Product Family	Crimp Terminals
Series	44476
Comments	High Current
Overview	<a href="#">Mini-Fit HCS™</a>
Product Name	Mini-Fit HCS™

## Physical

Gender	Female
Material - Metal	High Performance Alloy (HPA)
Material - Plating Mating	Tin
Material - Plating Termination	Tin
Packaging Type	Bag
Plating min: Mating (µin)	100
Plating min: Mating (µm)	2.5
Termination Interface: Style	Crimp or Compression
Wire Insulation Diameter	1.80-3.10mm (.071-.122")
Wire Size AWG	16
Wire Size mm²	N/A

## Material Info

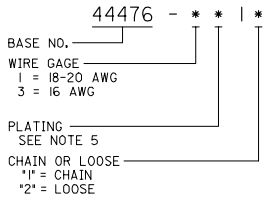
**EU RoHS**  
ELV and RoHS  
Compliant

**China RoHS**



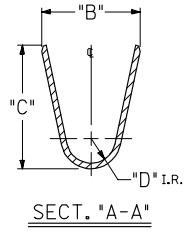
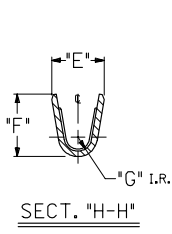
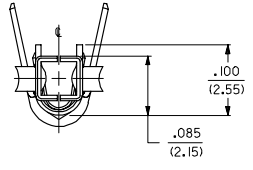
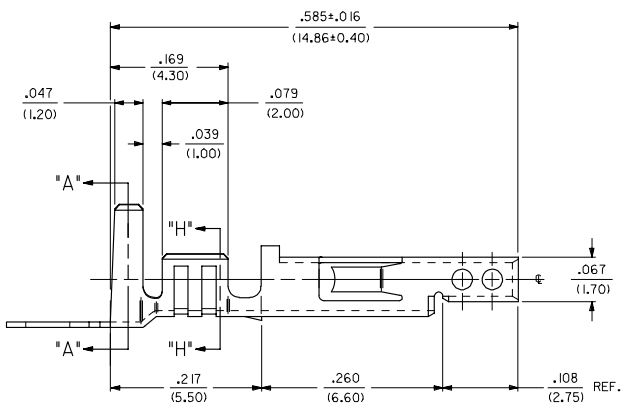
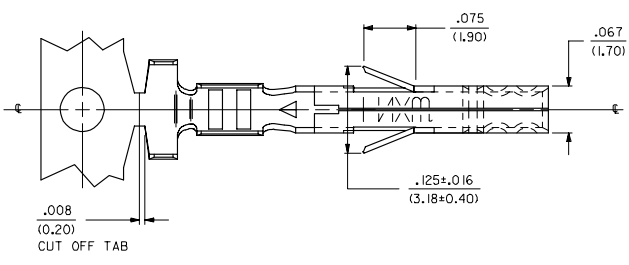
ITEM NO.	FORM	WIRE GAGE	QUANTITY PER REEL	DIM. "B"	DIM. "C"	DIM. "D"	DIM. "E"	DIM. "F"	DIM. "G"
44476-1111	CHAIN	18-20 GA.	4,000	.142±.012	.177±.016	.035	.075±.012	.091±.016	.020
44476-1112	LOOSE			(3.60±0.30)	(4.50±0.40)	(0.90)	(1.90±0.30)	(2.30±0.40)	(0.50)
44476-3111	CHAIN	16 GA.	4,000	.142±.012	.177±.016	.035	.091±.012	.106±.016	.024
44476-3112	LOOSE			(3.60±0.30)	(4.50±0.40)	(0.90)	(2.30±0.30)	(2.70±0.40)	(0.60)

**LEGEND:**



**NOTES:**

- PART DESIGNED IN METRIC.
- TERMINAL FOR USE WITH 5557, 30067 & 42474 SERIES HOUSINGS.
- MATES WITH 44478 MALE TERMINAL AND 43810, 44068, 44472, 44473, 44474, 42404, 5569 AND 30070 SERIES CONNECTORS.
- MATERIAL: COPPER ALLOY, .008/(.203) THICK.
- FINISH:
  - \*1 = POSTPLATE .000100/(.00254) MIN. BRIGHT TIN OVER .000050/(0.00127) MIN. NICKEL OVERALL.
  - \*THE PRIMARY SHIPPING CARTON WILL BE LABELED "COMPLIANT TO RoHS DIRECTIVE 2002/95/EC AND ELV ANNEX II OF DIRECTIVE 2000/53/EC." CARTONS WITHOUT THIS LABEL MAY CONTAIN PRODUCT WITH TIN-LEAD PLATING.
- ITEM NUMBERS PRECEDED BY AN "X" IN THE CHART ARE NOT AVAILABLE.
- PRODUCT SPECIFICATION AND PROCESSING PARAMETERS: SEE PS-44476-001.



CHANGED NOTE 4 EC NO: UCP2006-0883 DRAWN BY: MNL 2005/10/25 CHKD BY: RJP 2005/10/25 APPR: JOMERC 2005/10/25	QUALITY SYMBOLS	GENERAL TOLERANCES (UNLESS SPECIFIED)	DIMENSION STYLE IN/MM	SCALE 10:1	DESIGN UNITS METRIC	THIRD ANGLE PROJECTION
	▽=0	4 PLACES ± --- ± ---	DRAWN BY SEP	DATE 1992/09/14	TITLE	TERMINAL, FEMALE, CRIMP
	▽=0	3 PLACES ± --- ± .010	CHECKED BY RJP	DATE 1992/09/14		MINI-FIT H.C.S. SERIES
		2 PLACES ± 0.25 ± .014	APPROVED BY RJP	DATE 1992/09/14		BLANK-PLATE-FORM
	1 PLACE ± 0.38 ± ---	ANGULAR ±1/2°	MATERIAL NO. SEE CHART	DOCUMENT NO. SD-44476-****	SHEET NO. 1 OF 1	MOLEX INCORPORATED
		DRAFT WHERE APPLICABLE MUST REMAIN WITHIN DIMENSIONS	SIZE C	THIS DRAWING CONTAINS INFORMATION THAT IS PROPRIETARY TO MOLEX INCORPORATED AND SHOULD NOT BE USED WITHOUT WRITTEN PERMISSION		