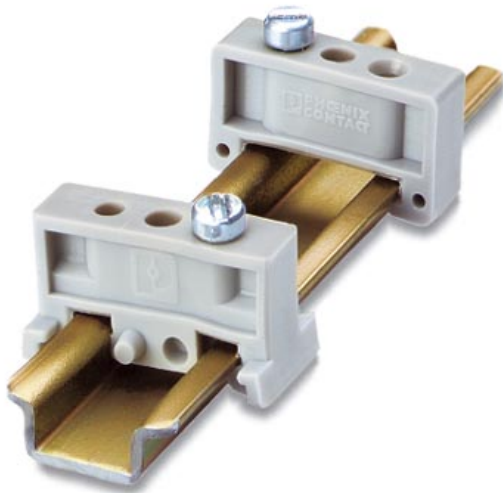


Please note that the data given here has been taken from the online catalog. For comprehensive information and data, please refer to the user documentation at <http://www.download.phoenixcontact.com>. The General Terms and Conditions of Use apply to Internet downloads.

► Extract from the online catalog



End bracket, width: 6.2 mm, color: gray

The illustration shows a combination of versions E/MBK and E/MK on mounting rail NS 15.

Order No.	1401637
Ord designation	E/MBK
EAN	4017918020484
Pack	100 Pcs.
Customs tariff	85369010
Catalog page information	Page 312 (CL-2005)

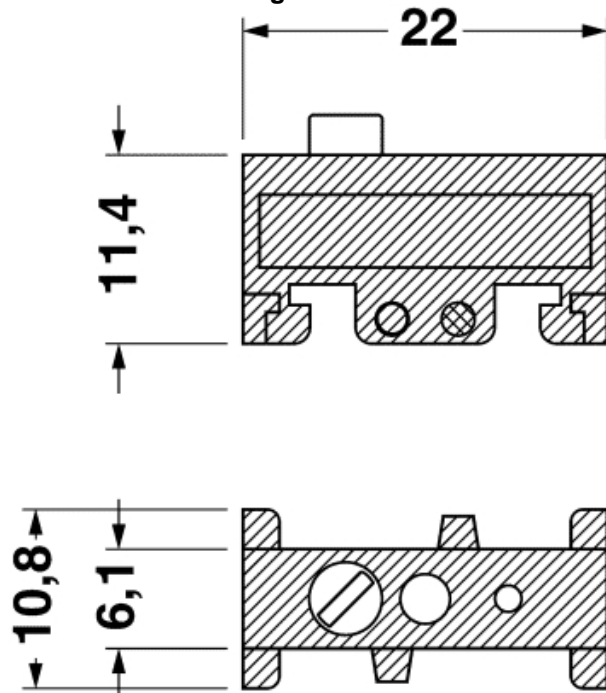
► Technical data

General data

Length	22 mm
Width	6 mm
Material	PA
Coating	3.2 mm fixing hole
Color	gray
Inflammability class acc. to UL 94	V2

► Drawings

Dimensioned drawing



► Accessories

Item	Designation	Description
Assembly		
1401682	NS 15 PERF 2000MM	DIN rail, material: steel, perforated, height 5.5 mm, width 15 mm, length: 2 m
1401695	NS 15 UNPERF 2000MM	DIN rail, material: Steel, unperforated, height 5.5 mm, width 15 mm, length: 2 m
1401763	NS 15-AL GELOCHT METER	DIN rail, material: Aluminum, perforated, height 5.5 mm, width 15 mm, length: 2 m

► **Address**

PHOENIX CONTACT Inc., USA
586 Fulling Mill Road
Middletown, PA 17057
USA
Phone (800) 888-7388
Fax (717) 944-1625
<http://www.phoenixcon.com>
Phoenix Contact
Technical modifications reserved;